

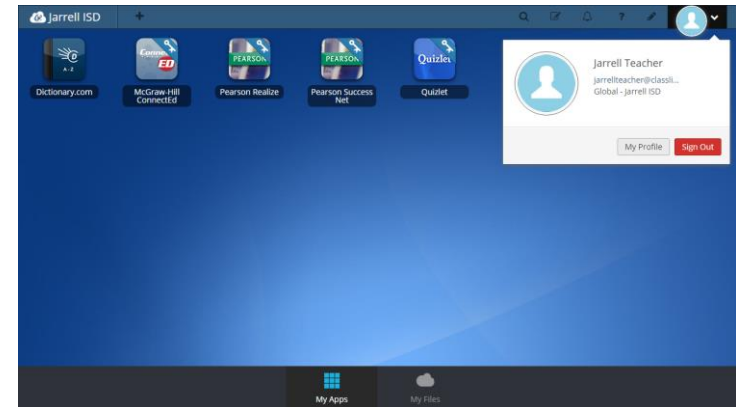
## 1. Sign In

Sign in by using your network login. After you connect your google account you can use 'Sign in with Google'.



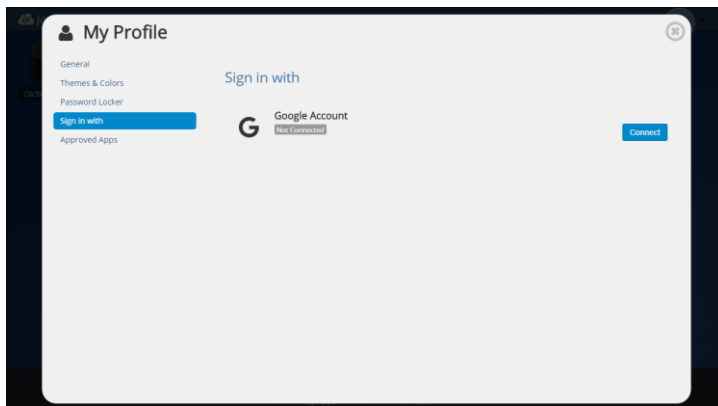
## 2. Profile Settings

Here is where you change your profile picture, themes & colors, access your password locker, and sign in with option.



## 3. Sign In With

**Profile Settings > Sign In With** allows you to connect your google account with ClassLink in order to use the 'Sign in with Google' button on your login page.



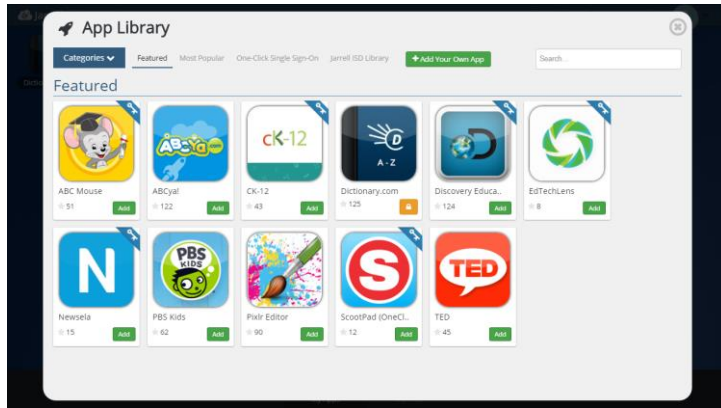
## 4. My Apps

The My Apps screen is where all of your online resources will be located. Enter your username and password once (if prompted) and ClassLink will remember it for you!



## 5. App Library

The library contains many educational resources to choose from. Click the Plus (+) on the top left of the My Apps screen. Click Add on any app to place it on your My Apps screen.



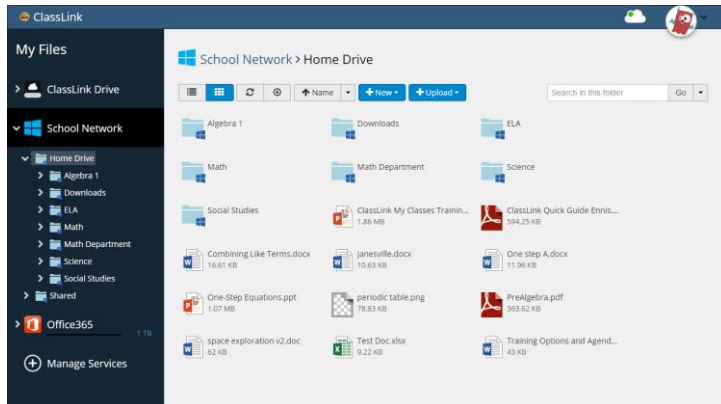
## 6. Edit Mode

To go into Edit Mode, click the paper and pencil symbol on the top right of your screen. While in Edit Mode, you can create folders and customize your My Apps screen.



## 7. My Files

**My Files > School Network** allows you to access your school network drives from any device, any where, any time.



## 8. Cloud Drives

**My Files > Manage Services > Connect** allows you to connect other Cloud services in ClassLink to access all of your files in one location!

