

**CARLISLE
COMMUNITY
SCHOOL DISTRICT**



**2014-2015
Annual Financial
and
Statistical Report**

Learning for a Lifetime

Annual Financial &
Statistical Report

Published:
September 2015

Carlisle Community
School District
430 School Street
Carlisle, Iowa 50047

www.carlislecsd.org

Carlisle Board of Education

Rob Joiner, President

Susan James, Vice President

Jenny Foster

John Judisch

Michelle Tish

Bryce Amos, Superintendent of Schools

The Carlisle Community Schools, like every public school district in Iowa, is governed by a board of directors. They are responsible for determining policies, setting the budget and maintaining standards of excellence in education on behalf of the community. Board members are elected by the Carlisle Community School District voters for four-year terms during a regular election held the second Tuesday in September of odd-numbered years.

This report will be available on the district's website. To receive additional printed copies or for more information about anything in this report, please call (515)989-3589.

| | | |
|-------------------------|--------------------|---------------|
| Superintendent | Bryce Amos | (515)989-3589 |
| High School Principal | Matthew Blackmore | (515)989-0831 |
| Middle School Principal | John Elkin | (515)989-0833 |
| Hartford Principal | Tim Norton | (515)989-0316 |
| Elementary Principal | Dr. Barb Niemeyer | (515)989-0339 |
| Business Manager | Jean Flaws | (515)989-3589 |
| Human Resource | Dr. Brandon Eighmy | (515)989-3589 |

*Learning
for a
Lifetime*

Consultants and Advisors

Independent Auditor

Hunt & Associates, P.C.
1201 High Avenue West
Oskaloosa, IA 52577

Attorney

Drew Bracken
Ahlers & Cooney, P.C.
100 Court Avenue, Suite 600
Des Moines, IA 50309-2231

Official Depositories

Great Western Bank

100 1st Street
Carlisle, Iowa 50047

Peoples Bank

1015 Hwy 5
Carlisle, Iowa 50047

ISJIT

6000 Grand Ave., Ste. A
Des Moines, IA 50312

Bankers Trust

453 7th Street
Des Moines, IA 50304-0897

Insurance

Central Iowa Insurance

120 S 1st Street
Carlisle, Iowa 50047

Wellmark Blue Cross Blue Shield

P.O. Box 10353
Des Moines, IA 50306

EMC National Life Company

PO Box 9202
Des Moines, Iowa 50306-9202

Madison National Life

PO Box 88789
Milwaukee, WI 53288-0789

Aveis

PO Box 52718
Phoenix, AZ 85072

Learning for a Lifetime

Mission Statement

CHARACTER, SERVICE AND EXCELLENCE IN
EVERYTHING WE DO

District Belief Statements

We believe that:

- Education
 - meets the needs of all students by being current and relevant.
 - prepares students to lead productive, moral, responsible lives.
- Communities
 - are valuable sources of information and expertise in the education of our students.
- Educators
 - are well-trained and proponents of life-long learning.
 - model desirable traits and serve as partners in learning for students and families.
- Students
 - deserve a safe, caring environment where their needs are met.
 - learn respect for themselves and others.
 - need developmentally appropriate opportunities to learn and explore.
 - are encouraged to strive for excellence in every endeavor.

Vision Statement

The Carlisle Community School District, in partnership with students, families, and our community is dedicated to:

- meeting the needs of all students.
- recognizing the uniqueness of each child.
- preparing students to lead productive, moral, responsible lives.

Adopted 7/14/03

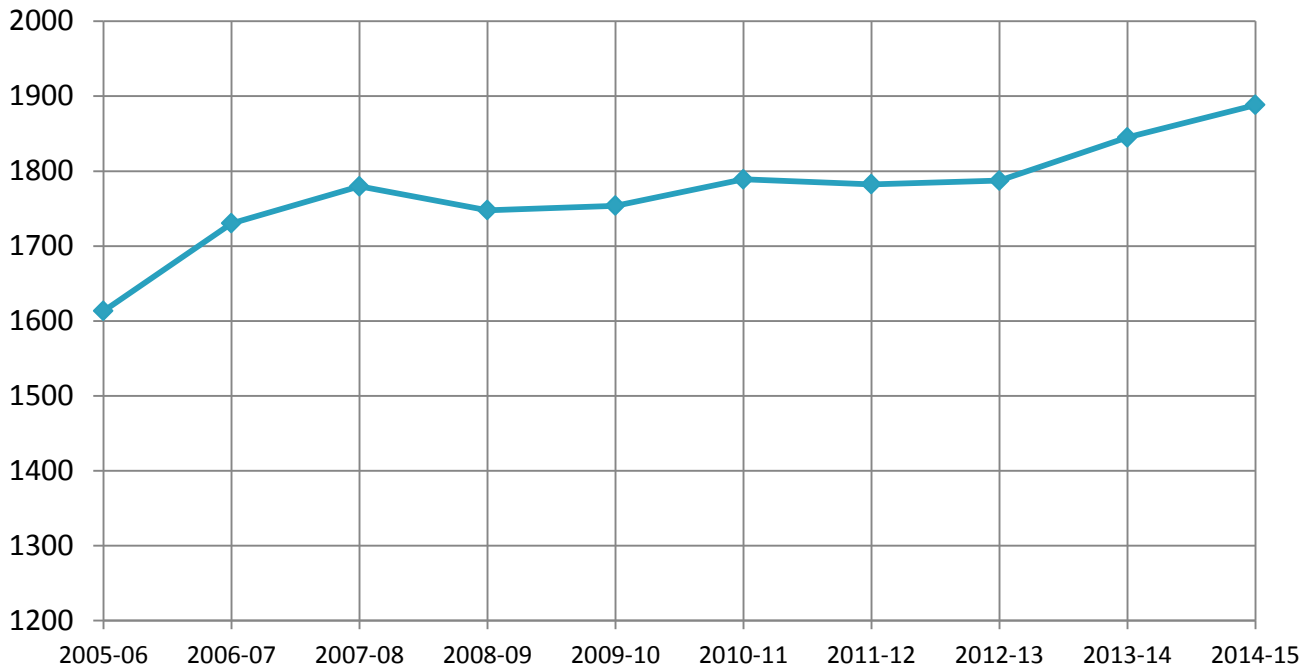
Learning for a Lifetime

Financial Highlights

- The Fiscal Year 2015 budget enrollment was 1845.01, an increase of 57.72 students from the Fiscal Year 2014 budget enrollment count. The legislature approved a 4% increase in supplemental state aid.
- Interest earnings for the 2014-2015 school year totaled \$24,955.82 for all funds.
- The district began to partial self-fund health insurance offered to employees for the 2010-2011 school year. At fiscal year end 2014-2015, there was a balance of \$666,185.95 in that fund.
- The district was the recipient of many generous donations during 2014-2015 totaling \$74,396 from various organizations such as PTO, Booster Club, CYA, Wells Fargo and Wellmark employees, parents, local patrons and businesses. These donations benefited many programs.
- During 2014-2015, the district also was the recipient of several grants applied for by employees totaling \$11,934.10. Grants received included General Mills Grant, and BRAVO Culture Grant.
- Two hundred twenty-five high school students earned a total of 2,375 college credits through 851 classes taken during 2014-2015. The district received \$104,657 through supplementary weighting funding to help with the total cost of classes taken, \$222,970.

Student Enrollment History

Certified Enrollment



| | | | | | | | | | |
|--------|--------|--------|--------|--------|---------|--------|--------|---------|---------|
| 1613.2 | 1730.2 | 1779.7 | 1747.7 | 1753.8 | 1788.97 | 1782.3 | 1787.3 | 1845.01 | 1888.33 |
|--------|--------|--------|--------|--------|---------|--------|--------|---------|---------|

Count date for certified enrollment is October 1 each year. Total certified enrollment on October 1, 2014 for the 2014-2015 school year was 1888.33 with 130.7 FTE teachers.



Open Enrollment

Iowa Code section 282.18 maximizes parental choice in providing a wide range of educational opportunities which are not available for pupils because of where they live. Following are lists of Open Enrollments coming into and going out of the Carlisle School District for the 2014-2015 school year:

OPEN ENROLLMENTS IN

| | | |
|------|---------------------|------------------|
| from | Ankeny | 3 students |
| | Des Moines | 137 students |
| | I-35 | 1 student |
| | Indianola | 33 students |
| | Knoxville | 2 students |
| | Norwalk | 2 students |
| | Panorama | 3 students |
| | Pleasantville | 9 students |
| | SE Polk | 15 students |
| | Urbandale | 1 student |
| | Van Meter | 1 student |
| | Waukee | <u>1 student</u> |
| | Total | 208 students |

OPEN ENROLLMENTS OUT

| | | |
|----|-------------------------|-------------------|
| to | Bondurant-Farrar | 2 students |
| | CAM | 3 students |
| | Clayton Ridge | 3 students |
| | Dallas Center Grimes .. | 1 student |
| | Des Moines | 38 students |
| | Indianola | 8 students |
| | Pleasantville | 1 student |
| | Southeast Polk | 5 students |
| | Southeast Warren | 2 students |
| | Waukee | 2 students |
| | West Des Moines | <u>2 students</u> |
| | Total | 67 students |

| | 2007-08 | 2008-09 | 2009-10 | 2010-11 | 2011-12 | 2012-13 | 2013-14 | 2014-15 |
|----------------------------|---------|---------|---------|---------|---------|---------|---------|---------|
| Open Enrollment "IN" | 69 | 96 | 127 | 139 | 174 | 198 | 216 | 208 |
| Open Enrollment "OUT" | 71 | 64 | 56 | 59 | 58 | 64 | 65 | 67 |
| Open Enrollment Comparison | -2 | +32 | +71 | +80 | +116 | +134 | +151 | +141 |

Special Education

It is the responsibility of each eligible individual's resident local education agency to provide or make provision for appropriate special education and related services to meet the requirements of state and federal statutes and rules.

Each local education agency shall ensure the provision of full educational opportunity to children requiring special education.

Following are lists of the Tuition In and Tuition Out special needs students:

TUITIONED IN

| | | |
|------|----------------------|------------------|
| from | Adair-Casey | 1 student |
| | Ankeny | 1 student |
| | Des Moines | 16 students |
| | Indianola | 5 students |
| | Southeast Polk | 3 students |
| | Urbandale | <u>1 student</u> |
| | Total | 27 students |

TUITIONED OUT

| | | |
|----|-------------------------|------------------|
| to | Ames | 2 students |
| | Ankeny | 1 student |
| | Bondurant-Farrar | 1 student |
| | College Community | 1 student |
| | Des Moines | 11 students |
| | DMACC | 7 students |
| | Indianola | 2 students |
| | Johnston | 1 student |
| | Southeast Polk | 2 students |
| | Vinton-Shellsburg | 1 student |
| | Waukee | 1 student |
| | Woodward-Granger | <u>1 student</u> |
| | Total | 31 students |

A total of 231 students were served in the special education program during the 2014-2015 school year by 18 teachers and 43 associates.

In addition, \$84,712 Part B funding was received during the 2014-2015 fiscal year. These Part B funds are federal financial assistance dollars under the provisions of the Individuals with Disabilities Education Act and are used to help defray the costs of educating students with disabilities.

The district received \$273,845.15 in 2014-2015 in Medicaid reimbursement.

Special Programs

EARLY CHILDHOOD

The district continued to receive the Statewide Voluntary Preschool Grant for the 2014-2015 school year in the amount of \$334,215.00. Expenditures totaled \$277,656.06 leaving a carryover balance of \$277,429.67. The program, employing 3 teachers plus classroom associates, served 112 preschool students. Because of the receipt of grant funds, the district is able to offer the preschool program and provide transportation at no cost to the parents. The district offers a morning and an afternoon session with classes meeting 4 days a week.

ELP/TALENTED AND GIFTED

Iowa Code section 257.43 requires each school district to incorporate talented and gifted programming into its comprehensive school improvement plan. Iowa Code section 257.46 specifies that the funding formula for the talented and gifted program be a combination of the state's allowable growth funds and local district funds. Expenditures for this program during the 2014-2015 school year totaled \$210,279.59. One hundred forty students were served in the district's program. The program is served by two and one-half full-time teachers.

HOME SCHOOL

Twenty-seven students were served in the district's home school assistance program and dual enrollment during the 2014-2015 school year. The district does provide the services of a home school coordinator to those students and families. Part of the district's property tax funds are allocated to the home school program. Expenditures for the 2014-2015 home school program totaled \$36,164.61.

Student Information



HIGH SCHOOL
Grades 9 - 12
 Student/FTE
 Teacher Ratios
 17.5 to 1



MIDDLE SCHOOL
Grades 6 - 8
 Student/FTE
 Teacher Ratios
 15.8 to 1

HARTFORD UPPER ELEMENTARY
Grades 4 - 5
 Student/FTE
 Teacher Ratios
 14.9 to 1



CARLISLE ELEMENTARY
Grades PS - 3
 Student/FTE
 Teacher Ratios
 16.3 to 1



**STUDENT POST GRADUATE FOLLOW-UP
 CLASS OF 2015**

| | |
|--------------------------------|----|
| Attending 4 year college | 67 |
| Attending 2 year college | 64 |
| Other post-secondary | 3 |
| Employment | 6 |
| Active military services | 14 |
| Unknown | 3 |

Faculty Breakdown



HIGH SCHOOL

of Teachers and Qualifications

| BA | BA+15 | BA+30 | BA+45/MA | MA+15 | MA+30 | MA+45 |
|----|-------|-------|----------|-------|-------|-------|
| 7 | 6 | 3 | 11 | 5 | 3 | 2 |



MIDDLE SCHOOL

of Teachers and Qualifications

| BA | BA+15 | BA+30 | BA+45/MA | MA+15 | MA+30 | MA+45 |
|----|-------|-------|----------|-------|-------|-------|
| 6 | 5 | 4 | 11 | 2 | 1 | 0 |



UPPER ELEMENTARY

of Teachers and Qualifications

| BA | BA+15 | BA+30 | BA+45/MA | MA+15 | MA+30 | MA+45 |
|----|-------|-------|----------|-------|-------|-------|
| 9 | 2 | 1 | 3 | 2 | 0 | 1 |



ELEMENTARY

of Teachers and Qualifications

| BA | BA+15 | BA+30 | BA+45/MA | MA+15 | MA+30 | MA+45 |
|----|-------|-------|----------|-------|-------|-------|
| 21 | 5 | 1 | 17 | 4 | 0 | 0 |

| YEARS OF EXPERIENCE | # OF TEACHERS |
|---------------------|---------------|
| 0-5 years | 41 |
| 6-10 years | 29 |
| 11-15 years | 35 |
| more than 15 years | 27 |

Absences

| | # of Employees w/benefit | Sick Leave | Family Sick Leave | Personal | Bereave Family | Bereave Friend | Professional | Average Days Absent Per EE |
|------------------------------------------|--------------------------|------------|-------------------|----------|----------------|----------------|--------------|----------------------------|
| Faculty | 152 | 1110.5 | 262.5 | 224.5 | 69 | 12.5 | 552 | 12.95 |
| Secretary | 8 | 31.5 | 9 | 12 | 0 | 1 | 0 | 5.56 |
| Nutrition | 6 | 60.5 | 2 | 6 | 1 | 0 | 0 | 11.25 |
| Cust/Bus Driver | 34 | 300.5 | 57 | 48 | 32 | 1.5 | 0 | 11.24 |
| | | | | | | | | |
| AVERAGE DAY/DAYS OF ABSENCE PER EMPLOYEE | | | | | | | | |
| Faculty | | 7.3 | 1.7 | 1.5 | 0.5 | 0.1 | 3.6 | 12.95 |
| Secretary | | 3.9 | 1.1 | 1.5 | 0.0 | 0.1 | 0.0 | 5.56 |
| Nutrition | | 10.1 | 0.3 | 1.0 | 0.2 | 0.0 | 0.0 | 11.25 |
| Custodian/Bus Driver | | 8.8 | 1.7 | 1.4 | 0.9 | 0.0 | 0.0 | 11.24 |

| Unused Leave | # of Employees w/benefit | Sick Leave | Personal Leave |
|-----------------|--------------------------|------------|----------------|
| Faculty | 152 | 8,101.50 | 191 |
| Secretary | 8 | 430.50 | 9 |
| Nutrition | 6 | 523 | 13.5 |
| Cust/Bus Driver | 34 | 1,782.50 | 33 |

Extra Teacher Compensation

In an effort to maintain and advance the educational excellence in the state of Iowa and to respond to teacher shortages and declining comparability of Iowa teachers' salaries with other states, the state of Iowa has established several funding sources listed below with the 2014-2015 allocation amounts received.

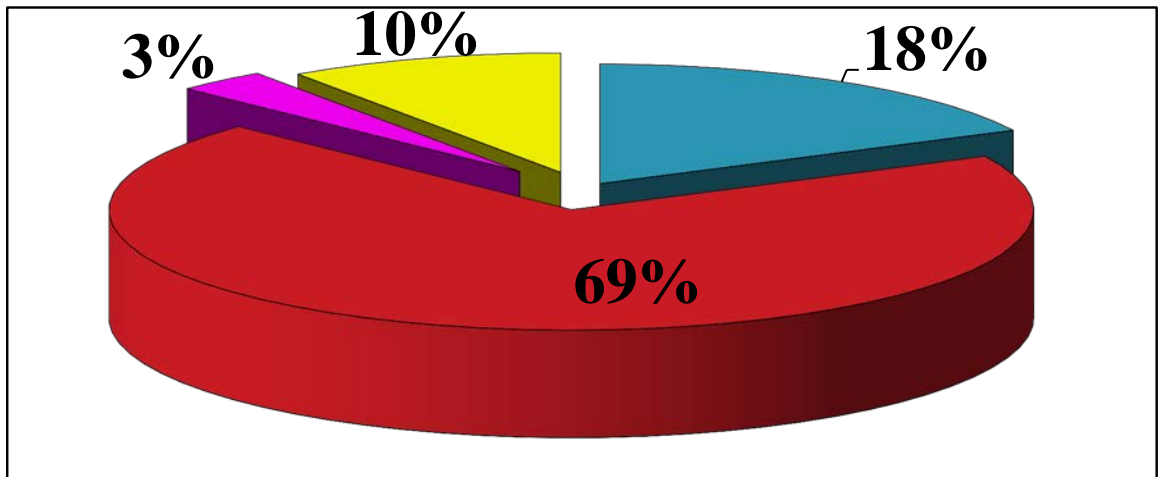
| State Money | Description | Amount |
|------------------------------------------------------------------------------------------------|--------------------------------------------------------------------------------------------------------------------------------------------------------------------------------------------------------------------------------------------------------------|------------|
| TSS (Teacher Salary Supplement) | Extra teacher compensation, paid to teachers This compensation is paid monthly to the teachers and the amount is figured on an FTE (full-time employee) basis. | 980,064.00 |
| Professional Development – Regular & Core Curriculum Extra Professional Development Day | Funds paid to teachers for time spent on professional development outside the normal working day plus registration fees for workshops and for presenters. Per diem compensation for an extra professional development day also comes from this money. | 99,446.00 |
| Teacher Mentoring | Mentors are assigned to first and second year teachers to provide help and support. Each mentor receives \$1,000 for their service. | 13,000.00 |



Revenues

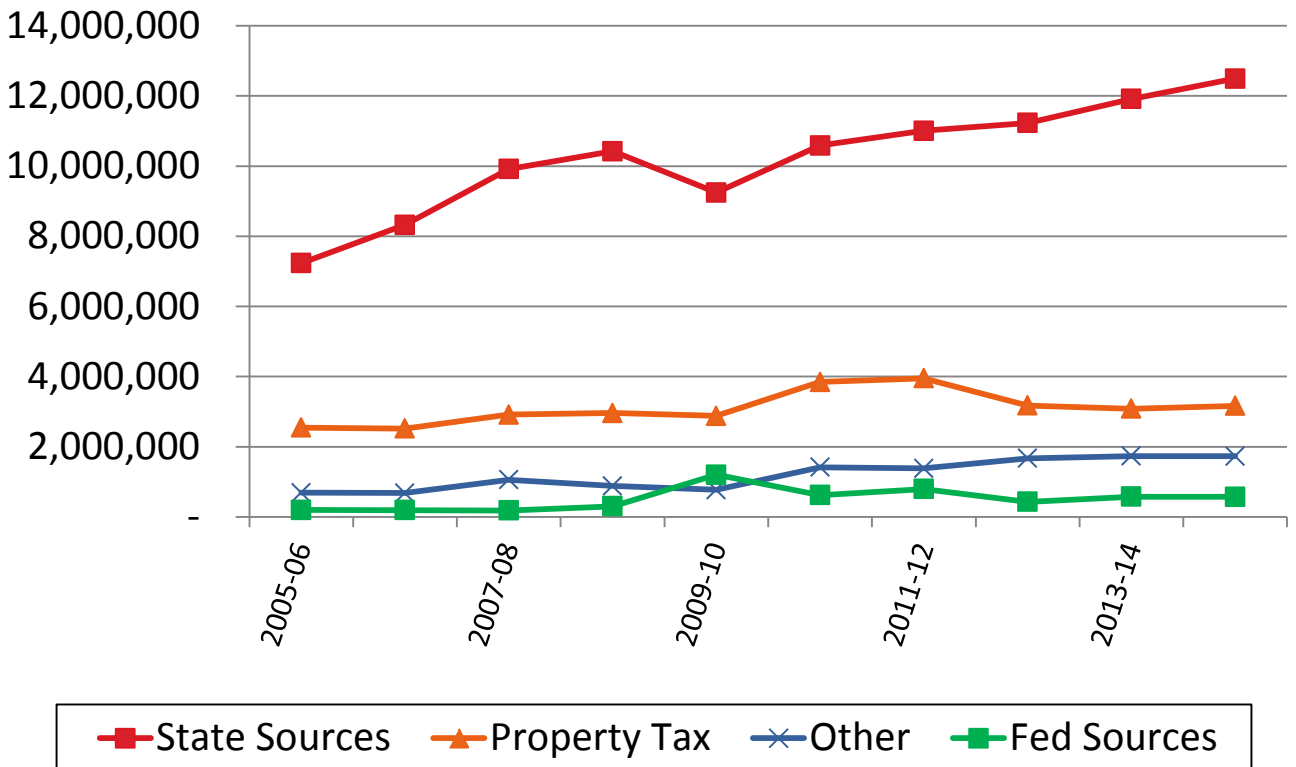
SUMMARY OF FINANCING FOR GENERAL FUND

| | | |
|-----------------|----|------------|
| Property Tax | \$ | 3,167,482 |
| State Sources | \$ | 12,491,102 |
| Federal Sources | \$ | 569,939 |
| Other Funding | \$ | 1,729,297 |



■ Property Tax ■ State Sources ■ Federal Sources ■ Other Funding

Actual Revenue History General Fund



What is included in the revenue groupings?

State Sources

State Aid, Preschool State Aid, AEA Flow thru, Teacher Compensation, Early Intervention, Non-public Transportation Aid

Property Tax

Warren and Polk County Taxes: regular, mobile home

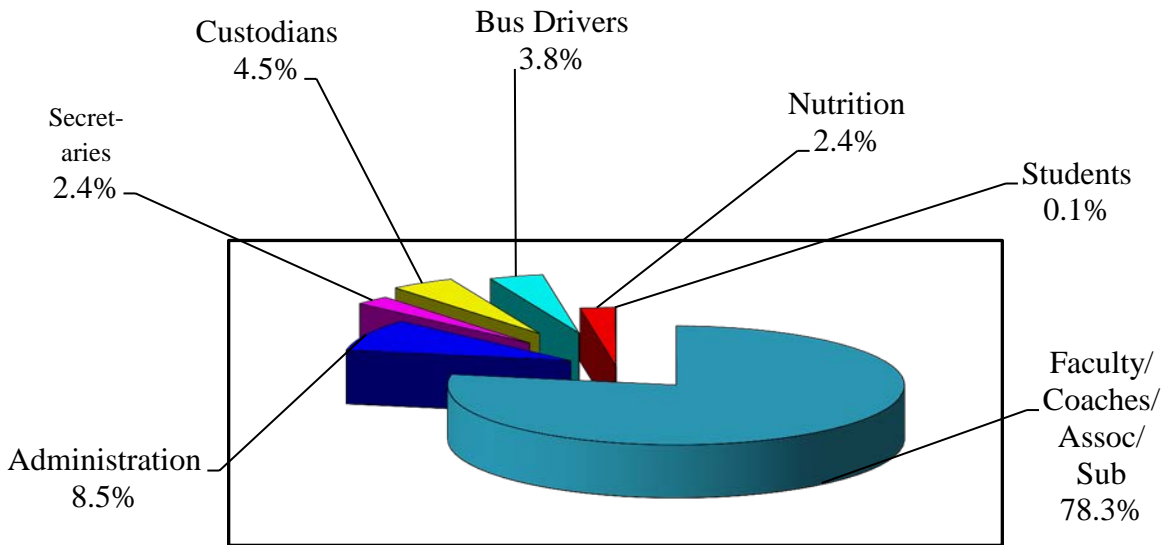
Other:

Open Enrollment, Special Education, Instructional Material Fees, Discretionary Transportation, Facilities Rental, Interest Earnings, Donations, Miscellaneous

Federal Sources:

Title I, Title II-A, Title VI, Special Education Part B, Carl Perkins, Medicaid

Employee Salaries



| | |
|---------------------------------|--------------|
| Faculty/Coaches/Assoc/Sub | \$ 8,810,387 |
| Administration | \$ 955,950 |
| Secretaries | \$ 271,147 |
| Custodians | \$ 502,700 |
| Bus Drivers | \$ 422,590 |
| Food Service | \$ 275,602 |
| Students | \$ 10,630 |

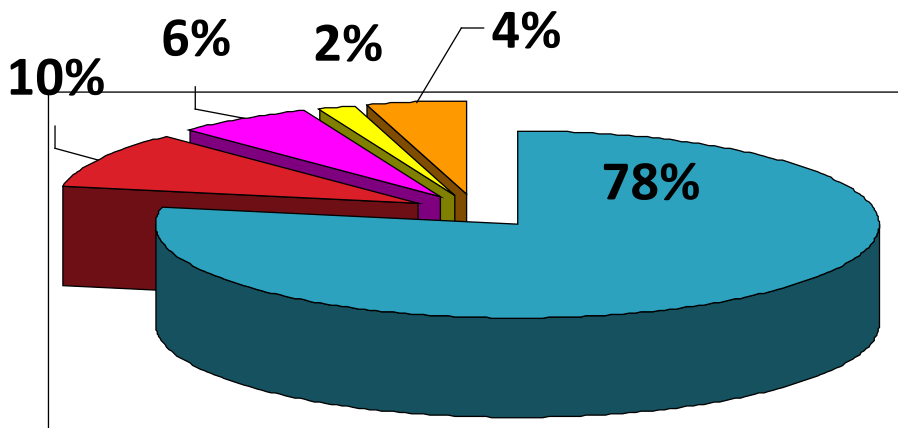
Salaries and benefits in the General Fund constituted 78.1% of the annual expenditures of the General Fund.

During 2014-15 there were 432 full and part-time employees of the School District.

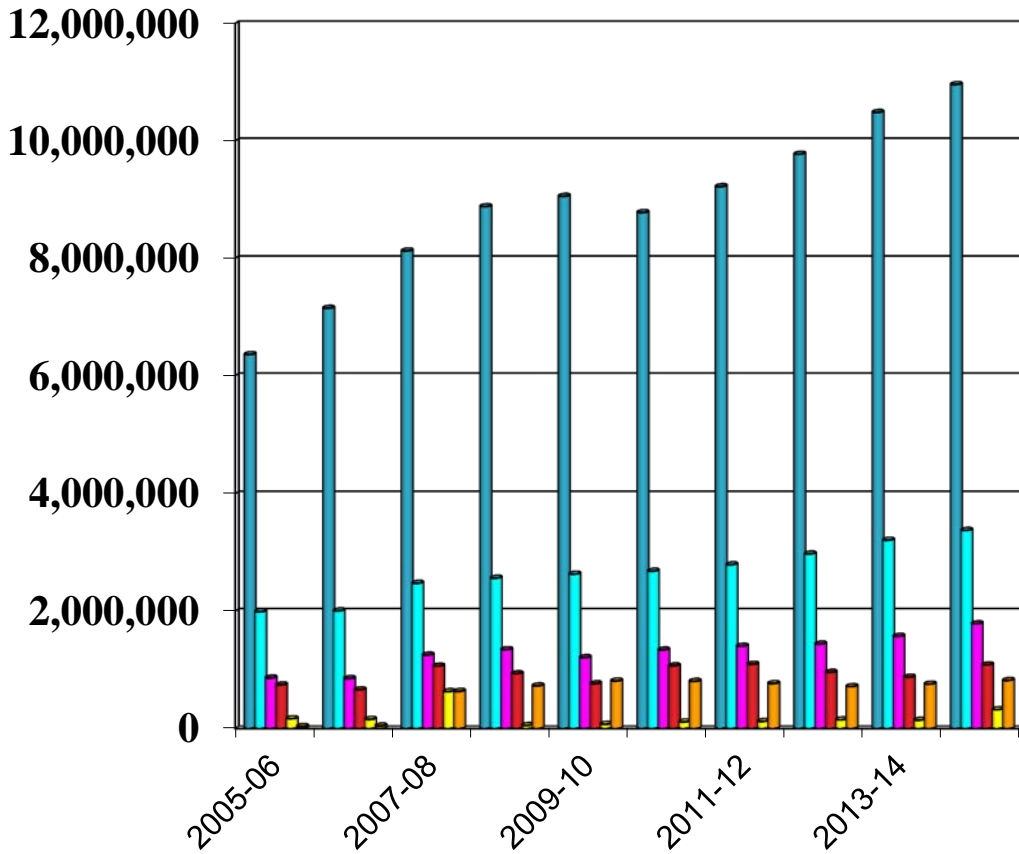
Expenditures

Summary of Expenditures - General Fund

| | |
|----------------|------------|
| Salaries | 10,959,507 |
| Benefits | 3,378,521 |
| Services | 1,787,162 |
| Supplies | 1,086,426 |
| Capital Outlay | 324,362 |
| Other | 821,224 |



Expenditure History General Fund

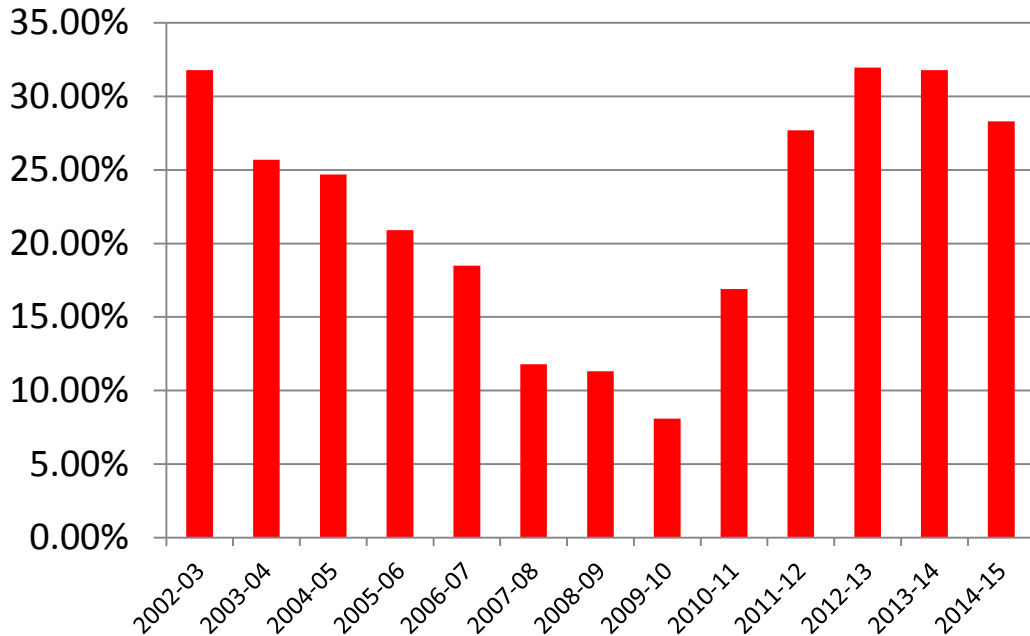


■ Salaries
 ■ Benefits
 ■ Services
 ■ Supplies
 ■ Cap Outlay
 ■ Other

Expenditures in the General Fund increased
in all areas compared to 2013-2014.

Solvency Ratio

Solvency Ratio History



The District's solvency ratio at the end of the fiscal year 2014-15 was 28.3%, a decrease from fiscal year 2013-14 (31.8%).

Solvency Ratio is an indicator of the financial position of the district. It is calculated by dividing the unassigned fund balance by the general fund revenues.

| | |
|------------------------|----------------------|
| Target solvency ratio: | 10 to 15 percent |
| Acceptable ratio: | 5 to 10 percent |
| Solvency alert: | 0 to 5 percent |
| Solvency concern: | lower than 0 percent |

Capital Projects

Local Option Sales Tax/Statewide Penny

- A Local Option Sales Tax for Warren County was passed on January 13, 2004. The Warren Co. Sales Tax plus the Polk Co. Sales Tax will be used to pay off the revenue bond that was issued July 7, 2004. Revenue from this bond was used for the Football Stadium and High School Gym improvements along with the Early Childhood Center. Polk County local option sales tax revenue that was received for 2014-2015 was \$545,459.07. Warren County local option sales tax revenue received was \$1,176,878.93.

- Statewide Penny Legislation passed in the spring of 2008 with Governor Culver signing on May 6, 2008. This legislation replaced the current local option sales tax as it expires in Polk (2010) and Warren (2014) Counties assuring more equal distribution of monies based on student population. The voters passed the Revenue Purpose Statement authorizing expenditure of revenues from the State of Iowa Secure An Advanced Vision for Education Fund (SAVE) on Sept. 9, 2008. Projected revenues allowed the district to bond for 11,325,000 to fund infrastructure projects at the Hartford building and at the high school. The projects began the summer of 2009 with and were completed the summer of 2011.

- Money received in 2014-2015 was used for the following items:

- Pre-parking lot work
- Payment on bonds for Hartford and High School Infrastructure Projects

PPEL/VPPEL

- On Sept. 11, 2007, patrons voted to reinstate the Voted PPEL in the amount of \$1.34 by a vote of 277 to 241. The district began receiving these funds in July 2008. The money is used to buy transportation vehicles, equipment > \$500 and fund infrastructure projects. The Voted PPEL along with the Regular PPEL generated \$500,029 for FY2015.

- Money received in 2014-2015 was used for the following items:

- Stadium Sound System
- Technology equipment
- Student information program
- Fiber project
- Soccer equipment
- Security upgrades
- Transportation vehicle

Transportation

The transportation fleet consists of 21 vehicles used for transporting students on regular routes; 16 buses, 3 vans and 2 suburbans.

Miles traveled during 2014-2015:

- Buses traveled a total of 150,781 miles
- Vans/suburbans traveled a total of 65,760 miles

Discretionary transportation was introduced during FY04. Revenue received for this added service amounted to \$23,326.80 in the 2014-2015 school year. A total of 160 students signed up to use this program. Current rate for this service is \$90 per student per quarter or \$150 per family per quarter. The fees paid fund the costs of the service.

The district purchased a bus, suburban and minivan during the 2014-2015 school year.

Through a state program, families residing in the Carlisle district and sending students to non public private schools can receive reimbursement for transporting the students if a completed form is submitted to the resident district. The district then files a report with the state in order to receive the funds to distribute to the families. Nineteen families were reimbursed for private school transportation for 2014-2015.



Nutrition

A total of 231,930 student lunches were served during the 2014-2015 school year of which 68,192 were free and 15,339 were reduced. The district served 62,985 student breakfasts with 34,066 being free and 4,865 reduced.

The amount of federal aid received for the breakfast and lunch program was \$362,721.87. The amount of state aid received for the breakfast and lunch program totaled \$7,866.19. The district received commodities valued at \$51,159.59.

Meal prices were increased for the 2014-2015 school year per federal guidelines.

Students: Breakfast \$1.35 Lunch \$ 2.25

Adults: Breakfast \$1.35 Lunch \$ 3.30



Building Trades

CONSTRUCTION CLASS

The Carlisle Community School District has been very fortunate to have instructors who have worked with students who are interested in construction. A new building has been constructed each year for the past 35 years. Mr. Wayne Fleishman instructed the class for the first 16 years followed by Mr. Al Stoner for the next 13 years. Mr. Jesse Seufferer took over the class in 2007-2008. Mr. Matt Hesse led the program beginning in 2011-2012. No house was built during the 2013-2014 and 2014-2015 school years. Following is list of the addresses of the buildings:

| | |
|-----------|------------------------------------------|
| 1978-1979 | 720 Market St., Carlisle |
| 1979-1980 | 120 N. 6 th St, Carlisle |
| 1980-1981 | The Carlisle Public Library |
| 1981-1982 | 24 Park St., Carlisle |
| 1982-1983 | 222 Park St., Carlisle |
| 1983-1984 | 610 Market St., Carlisle |
| 1984-1985 | 635 9 th St., Carlisle |
| 1985-1986 | 945 9 th St., Carlisle |
| 1986-1987 | 835 Terrace Dr., Carlisle |
| 1987-1988 | 725 Terrace Dr., Carlisle |
| 1988-1989 | 625 Market St., Carlisle |
| 1989-1990 | 1325 Hardin Dr., Carlisle |
| 1990-1991 | 225 Main St., Carlisle |
| 1991-1992 | 530 Main St., Carlisle |
| 1992-1993 | 45 Elm St., Carlisle |
| 1993-1994 | 65 Elm St., Carlisle |
| 1994-1995 | 425 Highland Dr., Carlisle |
| 1995-1996 | 415 Highland Dr., Carlisle |
| 1996-1997 | 1290 S. 5 th Street, Carlisle |
| 1997-1998 | 215 N. 6 th St., Carlisle |
| 1998-1999 | 3000 E. Diehl Ave, Des Moines |
| 1999-2000 | 840 William Nowles Circle, Carlisle |
| 2000-2001 | 535 Veterans Memorial Dr., Carlisle |
| 2001-2002 | 615 Veterans Memorial Dr., Carlisle |
| 2002-2003 | 605 Veterans Memorial Dr., Carlisle |
| 2003-2004 | 715 William Nowles Dr., Carlisle |
| 2004-2005 | 830 William Nowles Circle, Carlisle |
| 2005-2006 | 1130 Lyle Murphy Drive, Carlisle |
| 2006-2007 | 1105 Lyle Murphy Drive, Carlisle |
| 2007-2008 | 1140 Bellflower Drive, Carlisle |
| 2008-2009 | 1130 Bellflower Drive, Carlisle |
| 2009-2010 | 1120 Bellflower Drive, Carlisle |
| 2010-2011 | 1035 Bellflower Drive, Carlisle |
| 2011-2012 | 1045 Bellflower Drive, Carlisle |
| 2012-2013 | 1055 Bellflower Drive, Carlisle |

The most recent house was sold for \$197,000. The houses are not priced to make a substantial profit. Only enough to cover expenses and to help defray cost of tools and equipment to use in the trade. A storage garage has been built with some of the profits to house their equipment along with instructional materials for the CAD Lab .

Insurance

2014-2015 Insurance Information

| Company | Insurance Type | Deductible | Coinsurance | Limits | Add'l Info | Cost |
|---------|------------------------------------|---------------|-------------|---------------|-------------------|------------|
| EMC | Property | 1,000 | 90% | 39,973,632 | Replacement Costs | 49,924.00 |
| | General Liability | 1,000 | | 2,000,000 | Aggregate Limit | 11,310.00 |
| | Auto | 100/Collision | | 1,000,000 | | 17,665.00 |
| | Crime | \$0 - \$1,010 | | 1.500-300,000 | | 1,994.00 |
| | Workers Comp | | | 500,000 | | 249,059.00 |
| | Umbrella | | | 5,000,000 | | 6,730.00 |
| | Errors & Omissions | | | 1,000,000 | | 4,694.00 |
| | Pollution | | | 500,000 | | 1,125.00 |
| | Data Compromise | | | | | 372.00 |
| | Builders Risk | 1,000 | | | 0 | 0.00 |
| | Group Excess - IASB Safety Program | | | | 15,000,000 | 3,714.00 |

| | | | | | |
|----------|--------------|------|-------------------------------|--------|----------|
| Wellmark | Health – PPO | 500 | 90% | Single | 585.73 |
| | | | | Family | 1,464.67 |
| | Health – PPO | 1000 | 90% (after deductible met) | Single | 497.63 |
| | | | | Family | 1,266.97 |
| | Dental | | | Single | 36.75 |
| | | | Family | 100.45 | |

| | | | | | |
|---------------------------|------|-------------------|--|--|------|
| EMC National Life Company | Life | \$50,000 Coverage | | | 7.00 |
|---------------------------|------|-------------------|--|--|------|

| | | | | | |
|-----------------------|----------------------|--|--|--|---------------|
| Madison National Life | Long-term disability | | | | .0023/\$1,000 |
|-----------------------|----------------------|--|--|--|---------------|

Additional Facts

Public education is an investment in the future

- The 2014-2015 regular program district cost per pupil was \$6,366.
- The total school tax levy for 2014-2015 was 17.91215 per \$1,000 of taxable valuation, a decrease of \$0.00031 from 2013-14.
- District Taxable Valuation per pupil = 161,716 while the State Taxable Valuation per pupil = 306,000.



•Taxable valuation for 2014-2015 was:

| | |
|----------------------|--------------------|
| Polk County | 98,407,068 |
| <u>Warren County</u> | <u>208,590,576</u> |
| Total | 306,997,644 |

This is an increase of 4.3% in Polk County, 2.24% in Warren County and a 2.89% increase overall in the district's taxable valuation.

*Your support makes
educational
opportunities available*