



Norwin School District Center for 21st Century Learners

*Norwin Board of Education
Presentation
September 17, 2012*



Cost Comparisons from Last School Year: Outside Cyber vs. Norwin Cyber

- Outside Cyber Schools

Regular Ed Per Student Cost= \$8,238

Special Ed Per Student Cost=\$13,242

- Norwin Cyber School

Cost per student=\$1440 per student

TOTAL COST: \$56, 175 (Tuition and Laptops)



Our Cyber, Our Savings

- If we did not have a the Norwin cyber option, our minimum cost to send the students who attended the Center for 21st Century Learners to an outside cyber school would have been:

\$181,236

WE SAVED \$125,061



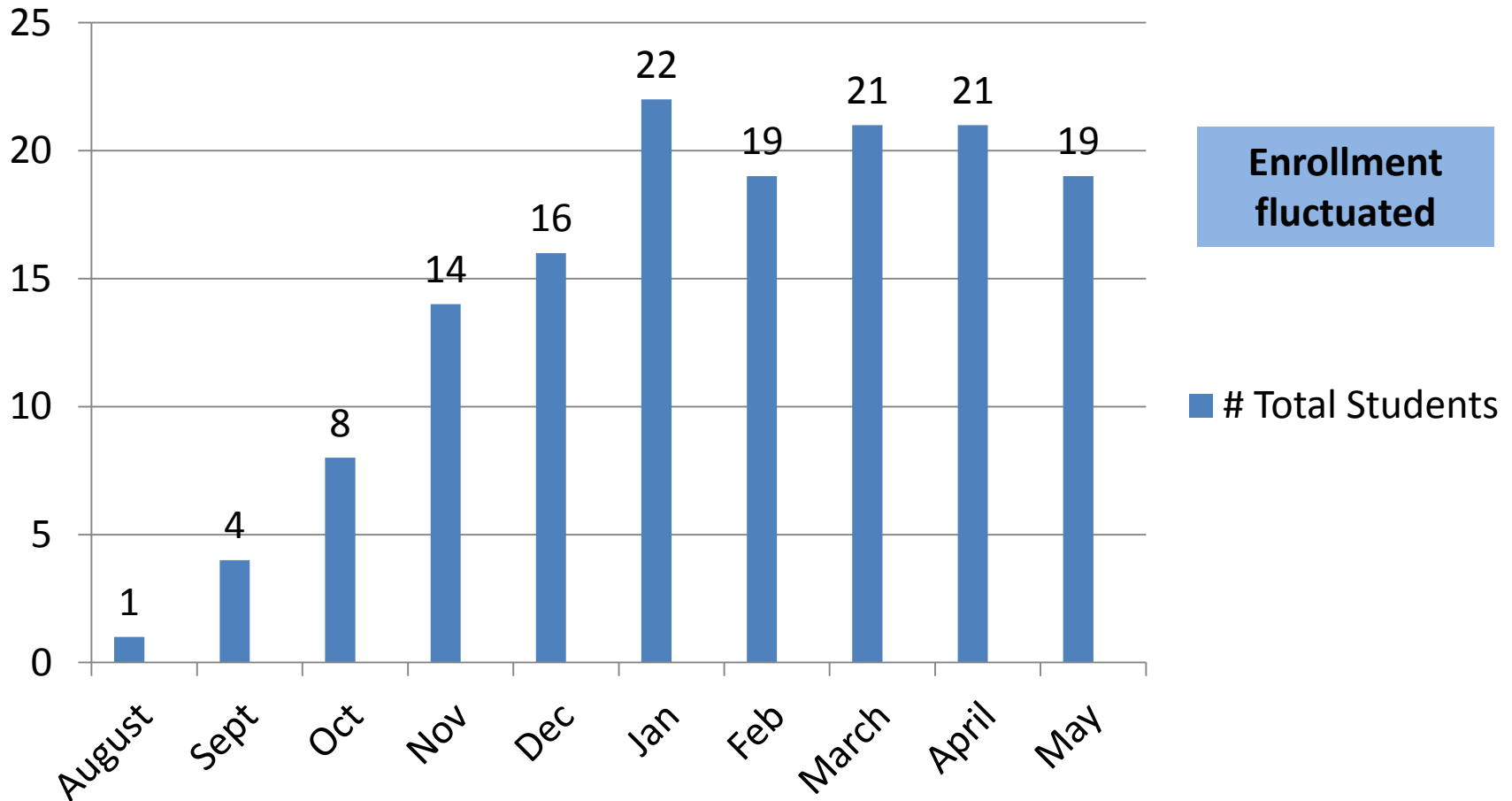
Enrollment eAcademy Last School Year 2011-2012

We also had 5
students taking
cyber remediation/
enrichment courses

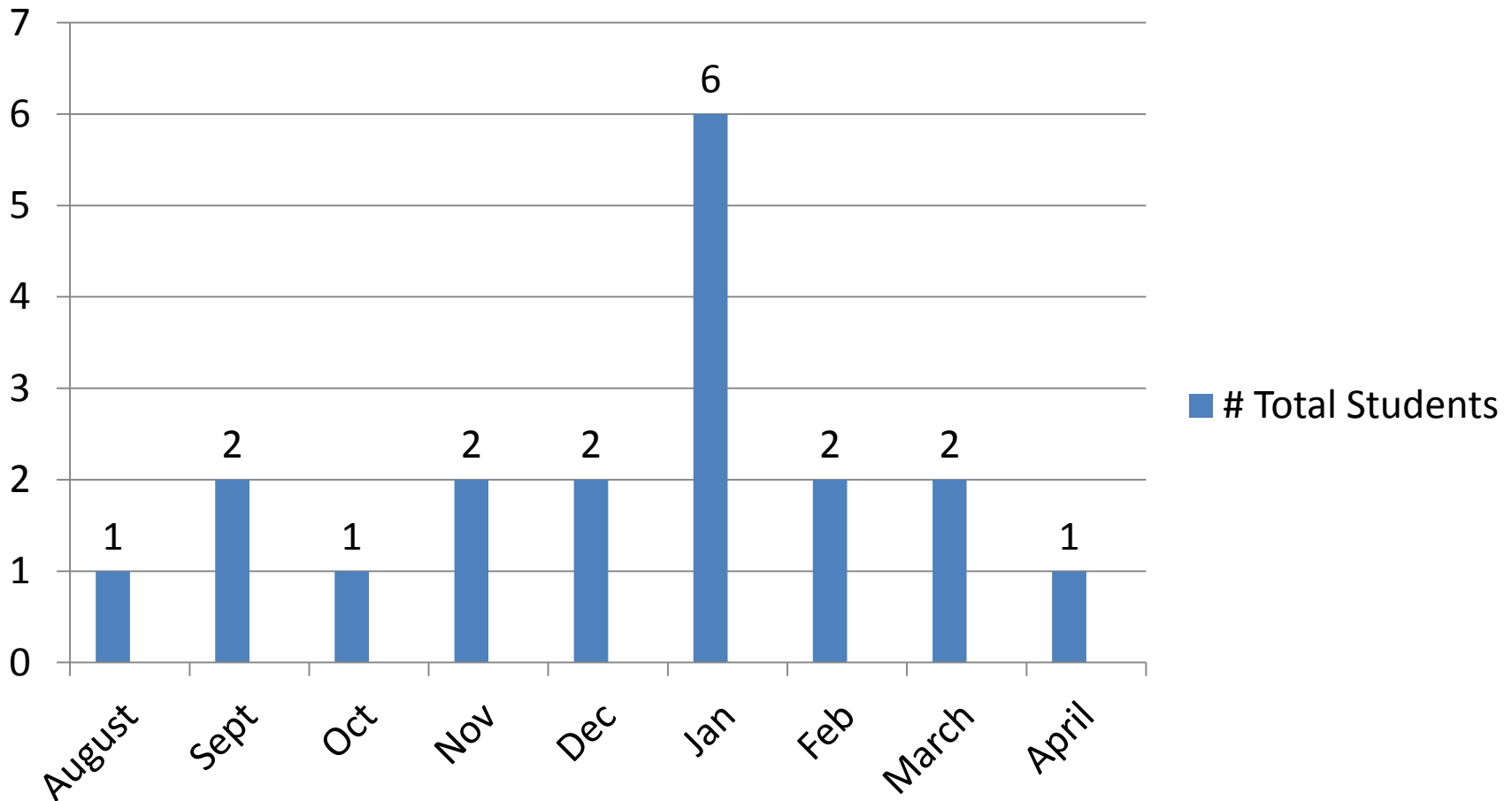
**31 total cyber
students=more than
one cyber course**

Grade Level	Number of Students	Hybrid (H) or Full Day (F)
9	5	4 F 1 H
10	9	7 F 2 H
11	10	9 F 1 H
12	7	4 F 3H

Monthly Enrollment eAcademy 2011-2012



Monthly Enrollment: Month Enrolled who Finished the Year at Norwin Cyber



Enrollment eAcademy 2012-2013

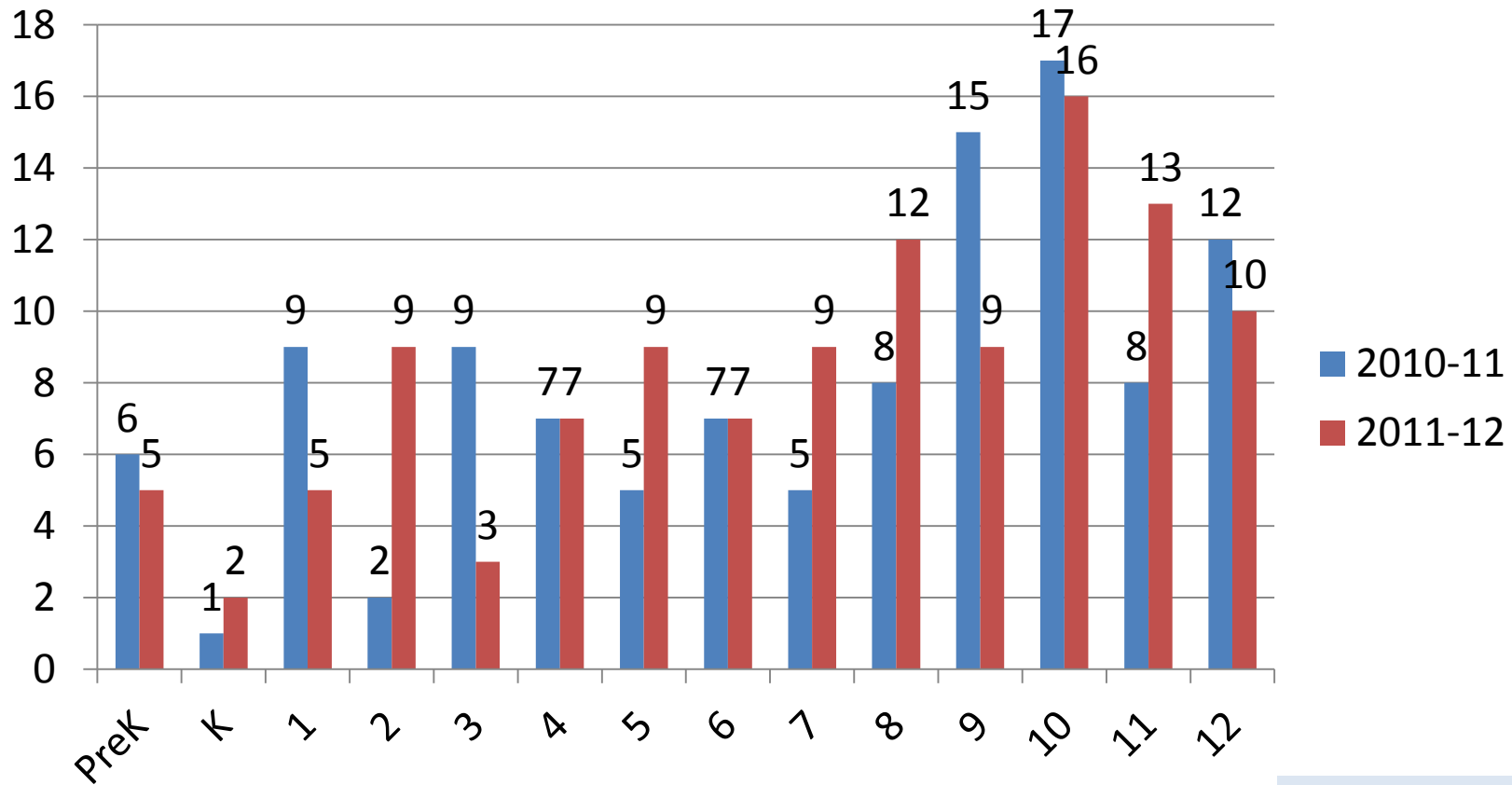
3 of these students returned from an outside cyber school:

1 grade 7 F
 1 grade 9 H
 1 grade 10 H

The remaining were in our cyber school last year, enrolled new to the District and were enrolled in an outside cyber or are Norwin students we stopped before they went to an outside cyber school.

Grade Level	Number of Students	Hybrid (H) or Full Day (F)
7	2	2 F
8	4	4 F
9	3	2 H 1 F
10	5	3 H 2 F
11	11	7 H 4 F
12	6	3 H 3 F

Outside Cyber Enrollment



**The High School
Cyber Enrollment
decreased by 4
students**

Norwin Cyber: New This Year

- Courses for Middle School Grades 7 & 8
- Additional Electives
- More Academic Courses
- New Moodle Platform for Easier Monitoring
- New Attendance Procedures for Students
- Plan for Cyber Residency Verification

