



# FAMILY SUPPORT & RESOURCE CENTER

*A statewide resource and referral center for families who have deaf and hard of hearing children*

## The Family Support and Resource Center Encourages:

**Families as Lifelong Educators:** Families observe, guide, promote and participate in the everyday learning of their children at home, school and in their communities.

**Family Engagement in Transitions:** Families support and advocate for their child's learning and development as they transition to new learning environments from Birth to age 21.

**Family Connections to Peers and Community:** Families form connections with peers and mentors in formal or informal social networks that are supportive



and/or educational and enhance social well-being and community life.

**Families as Advocates and Leaders:** Parents and families participate in leadership development, decision-making, program policy development, and in community and state organizing activities to improve children's development and learning experiences.

**Positive Parent-Child Relationships:** Beginning with transitions to parenthood, parents and families develop warm relationships that nurture their child's learning and development.



*For more information contact:*

*Cheri Dowling at [cheri.dowling@msd.edu](mailto:cheri.dowling@msd.edu) or 410-696-3045 (office); 443-277-8899 (cell/text)  
PO Box 894, 8169 Old Montgomery Road, Columbia, MD 21044*





# FAMILY SUPPORT & RESOURCE CENTER

*A statewide resource and referral center for families with deaf and hard of hearing children*

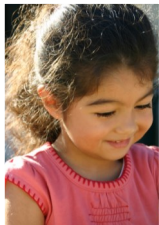


## **Information and Resources**

Provide families and professionals information about national and state resources.

Helps families resolve concerns and make informed decisions regarding their child's education

Provide families with support, resources, and information about language learning opportunities for their deaf and hard of hearing child.



## **Workshops:**

Provides practical workshops designed to meet the needs of parents and educators are offered through-out the year. Topics include IEP, Transition, School Records, Internet Safety, Support Groups, and much more.

## **Lending Library**

Publications and videos on a variety of topics are available for loan to families and professionals.



## **Newsletter and Email News**

Family Support and Resource Center publishes a newsletter several times a year full of topics of interest to families and professionals.

Sends emails with upcoming events to keep families and professionals informed.



*For more information contact:*

*Cheri Dowling at [cheri.dowling@msd.edu](mailto:cheri.dowling@msd.edu) or 410-696-3045 (office); 443-277-8899 (cell/text)  
PO Box 894, 8169 Old Montgomery Road, Columbia, MD 21044*