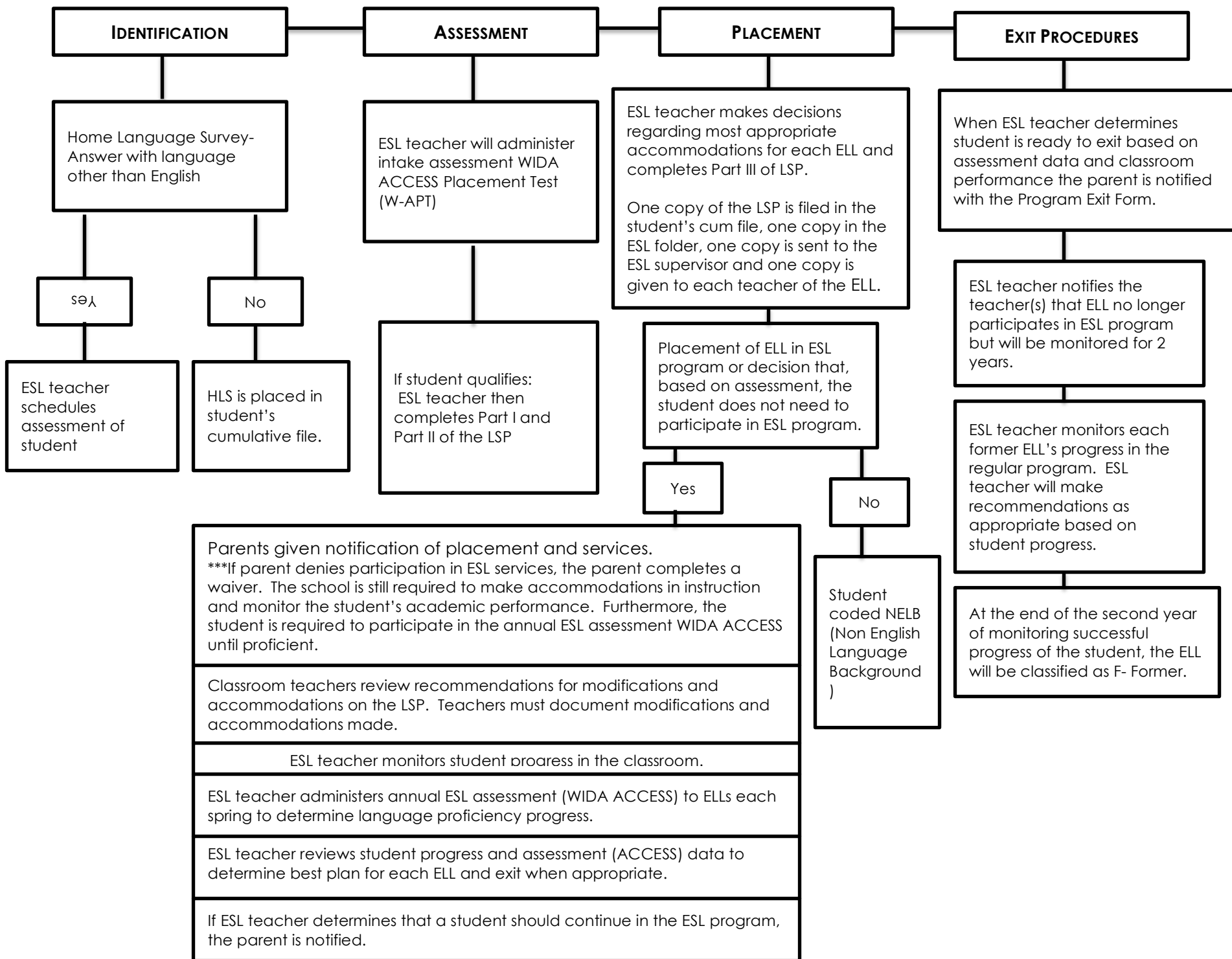


## BARTLETT CITY SCHOOLS- ESL FLOWCHART



### IDENTIFICATION

Home Language Survey- Answer with language other than English

Yes

ESL teacher schedules assessment of student

No

HLS is placed in student's cumulative file.

### ASSESSMENT

ESL teacher will administer intake assessment WIDA ACCESS Placement Test (W-APT)

If student qualifies: ESL teacher then completes Part I and Part II of the LSP

### PLACEMENT

ESL teacher makes decisions regarding most appropriate accommodations for each ELL and completes Part III of LSP.

One copy of the LSP is filed in the student's cum file, one copy in the ESL folder, one copy is sent to the ESL supervisor and one copy is given to each teacher of the ELL.

Placement of ELL in ESL program or decision that, based on assessment, the student does not need to participate in ESL program.

Yes

Parents given notification of placement and services. \*\*\*If parent denies participation in ESL services, the parent completes a waiver. The school is still required to make accommodations in instruction and monitor the student's academic performance. Furthermore, the student is required to participate in the annual ESL assessment WIDA ACCESS until proficient.

Classroom teachers review recommendations for modifications and accommodations on the LSP. Teachers must document modifications and accommodations made.

ESL teacher monitors student proaress in the classroom.

ESL teacher administers annual ESL assessment (WIDA ACCESS) to ELLs each spring to determine language proficiency progress.

ESL teacher reviews student progress and assessment (ACCESS) data to determine best plan for each ELL and exit when appropriate.

If ESL teacher determines that a student should continue in the ESL program, the parent is notified.

No

Student coded NELB (Non English Language Background )

### EXIT PROCEDURES

When ESL teacher determines student is ready to exit based on assessment data and classroom performance the parent is notified with the Program Exit Form.

ESL teacher notifies the teacher(s) that ELL no longer participates in ESL program but will be monitored for 2 years.

ESL teacher monitors each former ELL's progress in the regular program. ESL teacher will make recommendations as appropriate based on student progress.

At the end of the second year of monitoring successful progress of the student, the ELL will be classified as F- Former.