



IB Exams

Sarah Fairman
IB Coordinator



What is the difference between IB and AP?

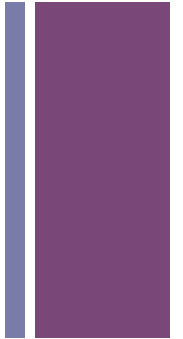


- Breadth and depth of curriculum
 - IB: Required two-year course of study
 - IB: 240 hours of instruction (HL) and 150 hours (SL)
- Rigorous assessment
 - IB: Required internal assessments to demonstrate student application of knowledge
 - IB: All exams are written except for one multiple-choice exam for the sciences



What is the IB Diploma?

- Successful completion and achievement on:
 - Internal and external assessments in six subject areas
 - Extended Essay (4,000 word analytical essay)
 - Theory of Knowledge course requirements
 - 150 hours of Creativity, Action, Service (CAS) completion and reflection
- A truly international standard of education
 - In May 2013, 120,000 students worldwide took the IB exams
 - IB Exams are criterion-referenced – students perform against a standard rather than each other

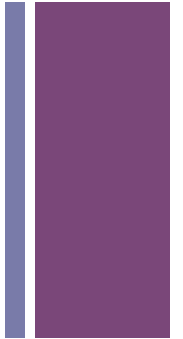




What does HL and SL mean?

- HL or Higher Level indicates:
 - 240 hours of instruction over two years (hence the longer school year)
 - Generally, more rigorous questions especially on a Paper 3 in History and the sciences

- SL or Standard Level indicates:
 - 150 hours of instruction over two
 - Same content as HL



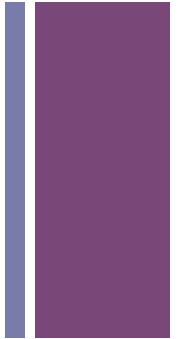


What are the six IB subjects?

- Group 1: Language and Literature
 - IA offers English A: Literature (HL and SL)

- Group 2: Language Acquisition
 - IA offers French, German (Okma only), and Spanish (HL, SL and ab initio)

- Group 3: Individuals and Societies
 - IA offers History Route 2: Europe and the Middle East with an emphasis on Arab/Israeli Conflict (HL or SL)
 - Economics(HL or SL)
 - Environmental Systems and Societies – ESS (SL only)



+ Six subjects continued

■ Group 4: Sciences

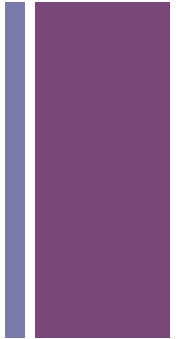
- IA offers Biology, Chemistry and Physics (HL and SL)
- Environmental Systems and Societies – ESS (SL only)

■ Group 5: Mathematics

- IA offers Math Studies (SL only), Mathematics SL, Math HL: Calculus and Further Mathematics HL

■ Group 6: The Arts

- IA offers Visual Arts and Music (HL or SL)
- Or students can take another course in Groups 2 through 4





Why HL or SL?

- Students **MUST** take three of the six exams at the HL level
- Students select the HL and SL choices at the **END** of junior year
- Students confirm the HL and SL choices at the beginning of senior year
- In a few cases, students may take four HL exams with the permission of administration
- College credit is generally granted for HL exams





What are the points needed for the IB Diploma?



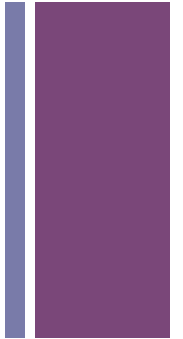
- Each subject scores is a combination of internal and external assessments and is given a score from 1-7 with 7 being best
- 24 points is the minimum needed to earn the IB Diploma
- 42 points is the highest exam score
- Up to three additional points can be added for good scores on the Extended Essay and Theory of Knowledge components

+ **IB Subjects Scale**

- 7** Excellent
- 6** Very good
- 5** Good
- 4** Satisfactory
- 3** Mediocre
- 2** Poor
- 1** Very poor
- N** No grade

The TOK course and the extended essay are graded according to the following scale.

- A** Excellent
- B** Good
- C** Satisfactory
- D** Mediocre
- E** Elementary
- N** No grade





When are the IB assessments?

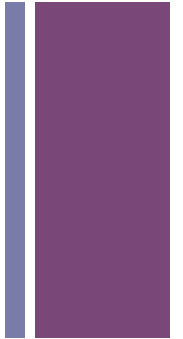
- Internal Assessments begin second semester of junior year and continue through February of senior year
- Each subject has different internal assessment requirements
- External assessments (written papers in Literature and Language Acquisition) are completed in class during junior or senior year
- External EXAMS are held in May of senior year accordingly to a prescribed schedule from IB
- This year, exams are May 5 – May 23





What is an internal assessment?

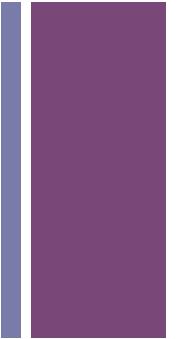
- Sample description from History:
- *Internal assessment is an integral part of the course and is compulsory for both SL and HL students. It enables students to **demonstrate the application of their skills and knowledge**, and **to pursue their personal interests**, without the time limitations and other constraints that are associated with written examinations.*
- *The internal assessment should, as far as possible, **be woven into normal classroom teaching** and not be a separate activity conducted after a course has been taught.*
- *The internal assessment requirements at SL and at HL are the same.*





What are internal assessments?

- Administered and assessed by IA faculty
- Moderated by the International Baccalaureate





Group 1: internal assessments



- **Group 1: Literature:**
- Individual Oral Presentation – Fall of junior year (student choice of poetry or novels)
- Individual Oral Commentary – generally late November/early December of senior year
- Written assignment (external assessment) – completed in class during May of junior year



Group 2: internal assessments



- **Group 2: Language Acquisition**
- Individual Oral Activity – Fall of senior year (student choice)
- Individual Oral – based on a visual prompt and generally February of senior year
- Written assignment (external assessment) – second semester of senior year



Group 3: internal assessments



- **Group 3: Individuals and Societies**
- Historical investigation (internal assessment) – second semester of junior year
- Economics: Students produce a portfolio of three commentaries, based on different sections of the syllabus and on published extracts from the news media over the two year course of study



Group 4: internal assessments



- **Group 4: Sciences**
- Group IV Project (an interdisciplinary project) – September of senior year
- Practical Scheme of Work (PSOW) consists of a mixture of short- and long-term investigations such as practicals and subject-specific projects over the course of the two years



Group 5: internal assessments



- **Group 5: Mathematics**
- Math Studies – Statistics Investigation – first semester senior year
- Math SL – Exploration – begins spring of junior year and ends fall of senior year
- Math HL – Exploration – January of junior year and ends spring of junior year



Group 6: The Arts



- **Group 6: The Arts**
- Visual Arts – developmental workbook and pieces are created throughout the two years
- Music – Musical Investigation is completed during senior year



What are the IB exams like?



- Depending upon the subject a student takes, they may sit for upwards of 18 papers (or exams) over the three-week testing period.
- All morning exams begin at 8:00 AM and afternoon exams begin at 2:00 PM.
- The length of the exam varies from 45 minutes for some SL exams to 3 hours for some HL exams.
- Please refer to the IB Exam Schedule for more information about times.



What are the exam questions like? What is the difference between an SL and HL exam?



- The HL and SL exams are different based upon the subject area.
- For example, the Chemistry, Physics and Economics HL Paper 3 have more math application than the SL exam for these subjects.
- For History, Paper 1 and Paper 2 ask the same questions but the weight of the grade is different for HL and SL.



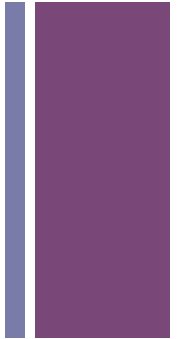
Sample of History HL Paper 3

- From History Route 2: History of the Americas
- 2.5 hour exam
- Students select three questions to answer from 24 questions/ headings

Independence movements

1. To what extent was hostility between Spain and Britain the main cause for at least one war of independence in the Americas?

2. **Compare and contrast** the contribution of two of the following leaders to the process of independence in the Americas: Adams; Jefferson; San Martín; Bolívar.





History HL Paper 3 sample



The development of modern nations 1865–1929

7. **Examine** the impact of immigration on one country of the region from the late nineteenth century to the early twentieth century.

8. With reference to at least one country of the region, to what extent were the aims of Progressivism achieved by 1929?

Emergence of the Americas in global affairs 1880–1929

9. “The United States’ policies of the Big Stick and Moral Diplomacy in Latin America had different motives but similar consequences.” To what extent do you agree with this statement?

10. **Evaluate** the arguments that took place in the United States over ratification of the Versailles Treaty following the First World War.



How are IB exams graded?

- Sent to a scanning center
- Sent around the world electronically to examiners
- This system of examination allows students to be assessed against the criteria and removes bias from grading.
- Once all exams are graded, a subject-area team meets in Cardiff, Wales at the IB assessment office to review the results.
- During this critical meeting, questions are reviewed and input from teachers regarding the exams is examined. This meeting then determines the mark bands for the 1-7 scoring.





Are IA students prepared for the IB exams?

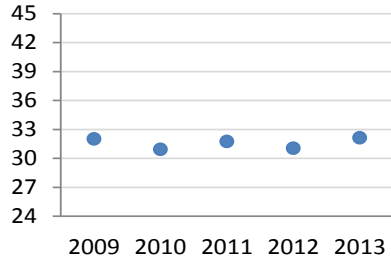


- In one word – **yes**
- Over-prepared in many cases
- May 2013 Statistics – 299 IB Diploma Candidates
- 96% acquisition rate
- 33 point average (world average generally 29)
- These results have remained consistent as the three campuses have come online

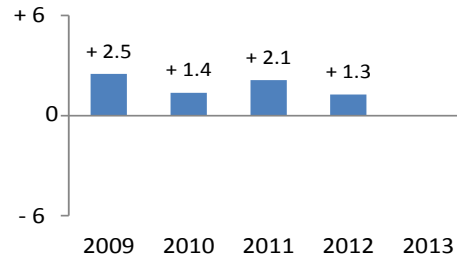
DIPLOMA SCORES

International Academy

Average Candidate Diploma Score



School Average minus World Average

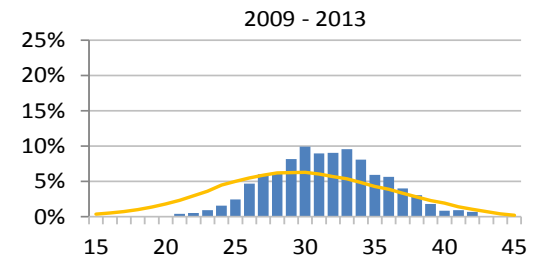
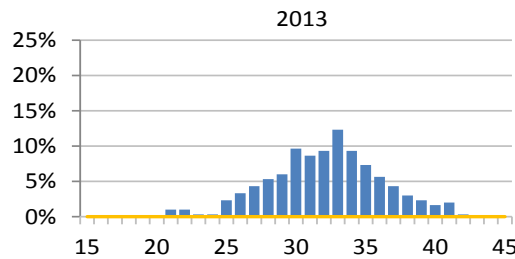
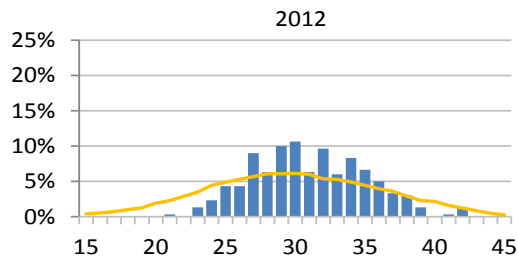
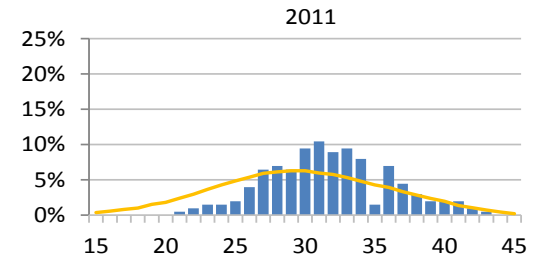
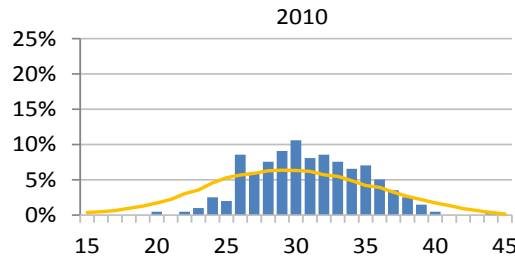
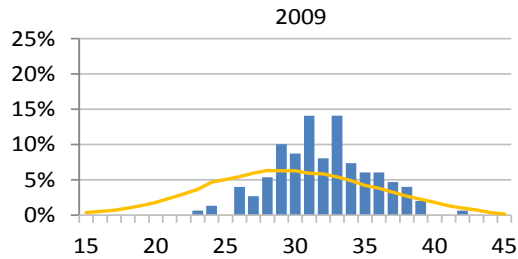


Aggregate Statistics

	2009	2010	2011	2012	2013	5 yr
Students	149	198	201	300	300	1148
High	42	44	43	42	42	44
Low	23	20	21	21	21	20
Median	32.0	31.0	31.0	31.0	32.0	31.0
Mean (Avg)	32.0	30.9	31.7	31.0	32.1	31.6
World Avg (WA)	29.5	29.6	29.6	29.8		29.6
(Avg-WA)	+ 2.5	+ 1.4	+ 2.1	+ 1.3		+ 1.9
Stat. Significant?	Yes	Yes	Yes	Yes		Yes

Diploma Score Distributions by Year

The yellow lines show the shape of the world-wide score distribution.





What about IB and college credit?

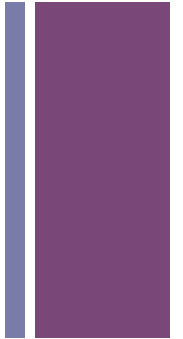
- Generally given for HL exams. SL students are **STRONGLY ENCOURAGED** to take placement exams at college.
- PLEASE Look for proper placement **NOT JUST CREDIT**.
- University of Michigan -
<http://www.admissions.umich.edu/drupal/ib-guidelines>
- Michigan State University -
http://admissions.msu.edu/admission/freshmen_ap-ib-clep.asp
- University of Pennsylvania -
<http://www.admissions.upenn.edu/apply/freshman-admission/ap-ib-and-pre-college-credit#International%20Baccalaureate>
- Alma College – 32 credits if IB diploma is earned -
http://www.alma.edu/content/catalog05-06/1-advanced_placement.html





How to help your child?

- Encourage them to sleep and prepare in advance for all assessments.
- For an internal assessment, students **MAY NOT BE ABSENT**. Work with your student and the teacher to insure attendance. Teachers publish the specific dates of internal assessments early and often students sign up for a particular session. **KNOW THESE DATES.**
- As parents, work hard to support but not stress out students. This is a delicate balance.



+ Additional Questions?

