

CARLISLE COMMUNITY SCHOOL DISTRICT



2010-2011 Annual Financial and Statistical Report

Learning for a Lifetime

Annual Financial &
Statistical Report

Published October, 2011

Carlisle Community
School District
430 School Street
Carlisle, Iowa 50047

www.carlisle.k12.ia.us

Carlisle Board of Education

John Judisch, President

Rob Joiner, Vice President

Mark Cowan

Susan James

Michelle Tish

Dr. Tom Lane, Superintendent of Schools

The Carlisle Community Schools, like every public school district in Iowa, is governed by a board of directors. They are responsible for determining policies, setting the budget and maintaining standards of excellence in education on behalf of the community. Board members are elected by the Carlisle Community School District voters for four-year terms during a regular election held the second Tuesday in September of odd-numbered years.

This financial profile was prepared on a cash basis. To receive additional copies or for more information about anything in this report, or to comment, call (515)989-3589.

| | | |
|-------------------------|--------------------|---------------|
| Superintendent | Dr. Tom Lane | (515)989-3589 |
| High School Principal | Mike Anthony | (515)989-0831 |
| Middle School Principal | Dr. Keri Schlueter | (515)989-0833 |
| Hartford Principal | Tim Norton | (515)989-0316 |
| Elementary Principal | Barb Niemeyer | (515)989-0339 |
| Business Manager | Jean Flaws | (515)989-3589 |
| Human Resource | Diana Whited | (515)989-3589 |

*Learning
for a
Lifetime*

Consultants and Advisors

Independent Auditor

Hunt & Associates, P.C.
1201 High Avenue West
Oskaloosa, IA 52577

Attorney

Ron Peeler
Ahlers & Cooney, P.C.
100 Court Avenue, Suite 600
Des Moines, IA 50309-2231

Official Depositories

Great Western Bank

100 1st Street
Carlisle, Iowa 50047

Peoples Bank

1015 Hwy 5
Carlisle, Iowa 50047

ISJIT

700 Second Ave., Ste. 100
Des Moines, IA 50309-1731

Bankers Trust

453 7th Street
Des Moines, IA 50304-0897

Insurance

Central Iowa Insurance Services

120 S. 1st Street
Carlisle, Iowa 50047

Wellmark Blue Cross Blue Shield

P.O. Box 10353
Des Moines, IA 50306

EMC National Life Company

PO Box 9202
Des Moines, Iowa 50306-9202

Madison National Life

PO Box 88789
Milwaukee, WI 53288-0789

Aveis

PO Box 52718
Phoenix, AZ 85072

Learning for a Lifetime

Mission Statement

CHARACTER, SERVICE AND EXCELLENCE IN
EVERYTHING WE DO

District Belief Statements

We believe that:

•Education

- meets the needs of all students by being current and relevant.
- prepares students to lead productive, moral, responsible lives.

•Communities

- are valuable sources of information and expertise in the education of our students.

•Educators

- are well-trained and proponents of life-long learning.
- model desirable traits and serve as partners in learning for students and families.

•Students

- deserve a safe, caring environment where their needs are met.
- learn respect for themselves and others.
- need developmentally appropriate opportunities to learn and explore.
- are encouraged to strive for excellence in every endeavor.

Vision

The Carlisle Community School District, in partnership with students, families, and our community is dedicated to:

- meeting the needs of all students.
- recognizing the uniqueness of each child.
- preparing students to lead productive, moral, responsible lives.

Adopted 7/14/03

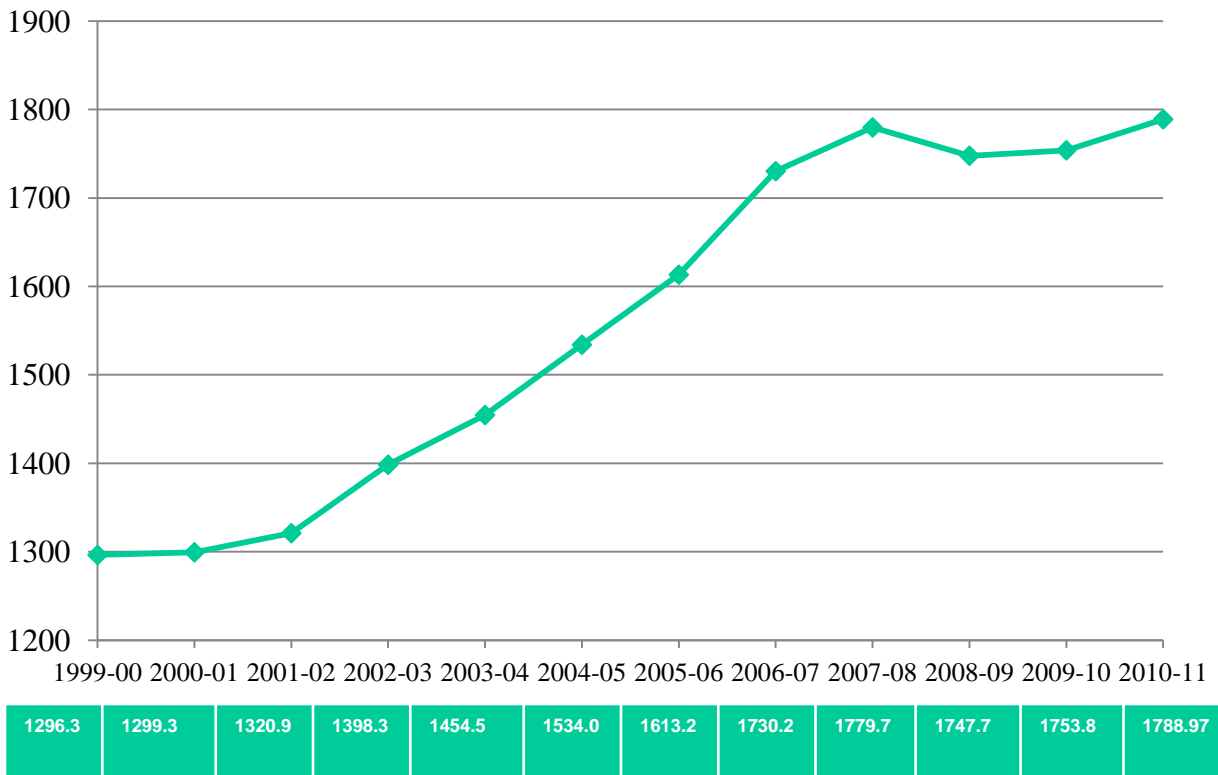
Learning for a Lifetime

Financial Highlights

- The Fiscal Year 2011 budget enrollment increased by 35.17 students from the Fiscal Year 2010 budget enrollment count. The legislature approved 0% allowable growth.
- The district received ARRA Stimulus money in four different areas: Title I, Part B, Professional Development and Education Stabilization. The first installment was received in June 2009 with remaining installments received during Fiscal Year 2010. The district received add'l funds for Education Stabilization and Education Government Services totaling 172,211.00 during Fiscal Year 2011.
- During Fiscal Year 2011, the district also received \$345,865.00 for the Education Jobs Fund. This money is to be expended by September 30, 2012. The district chose to carryover \$327,608.14 for Fiscal Year 2012.
- A Local Option Sales Tax for Warren County was passed on January 13, 2004. This Warren Co. Sales Tax plus the Polk Co. Sales Tax will be used to pay off the revenue bond that was issued July 7, 2004. Revenue from this bond was used for the Football Stadium and High School Gym improvements along with the Early Childhood Center. Polk County local option sales tax revenue that was received for 2010-2011 was \$427,448.19. Warren County local option sales tax revenue received was \$769,442.71.
- Statewide Penny Legislation passed in the spring of 2008 with Governor Culver signing on May 6, 2008. This legislation will replace the current local option sales tax as it expires in Polk (2010) and Warren (2014) Counties assuring more equal distribution of monies based on student population. This allowed the district to bond for 11,325,000 to fund infrastructure projects at Hartford and at the high school. The projects began the summer of 2009 with and were completed the summer of 2011.
- Interest earnings for the 2010-2011 school year totaled \$42,134.93.
- In July, 2007 the purchase of technology and phone equipment to be paid with school equipment purchase capital notes in amount of \$230,000. Repayment began in January 2008 with the last payment scheduled for July 2011. Repayment will be made with general fund money.
- The board also authorized in May 2008 more general obligation capital loan notes in the amount of \$443,000 to purchase more technology equipment district-wide. Repayment began January 2009 and will end July 2012. Voted PPEL monies will fund the debt repayment.
- On Sept. 11, 2007, patrons voted to reinstate the Voted PPEL in the amount of \$1.34 by a vote of 277 to 241. The district began receiving these funds in July 2008. The money will be used to buy buses and fund infrastructure projects, along with paying off the capital loan notes as stated above.
- The district was awarded a BEEP grant to help purchase a new bus and install retrofits in buses owned by the district to improve energy efficiency exhaust systems. Work needs to be completed by September 30, 2011.
- The district began to partial self-fund health insurance offered to employees for the 2010-2011 school year. At year-end, there was a balance of \$98,980.00.

Student Enrollment History

Certified Enrollment



Total certified enrollment for 2010-2011 was 1788.97 with 118 FTE teachers



Open Enrollment

Iowa Code section 282.18 maximizes parental choice in providing a wide range of educational opportunities which are not available for pupils because of where they live. Following are lists of Open Enrollments coming into and going out of the Carlisle School District for the 2010-2011 school year:

OPEN ENROLLMENTS IN

| | | |
|------|-----------------------|------------------|
| from | Clarke | 1 student |
| | Des Moines | 95 students |
| | I-35 | 2 students |
| | Indianola | 16 students |
| | Norwalk | 1 student |
| | Pleasantville | 9 students |
| | SE Polk | 10 students |
| | Urbandale | 2 students |
| | West Des Moines | 2 students |
| | Winterset | <u>1 student</u> |
| | Total | 139 students |

OPEN ENROLLMENTS OUT

| | | |
|----|--------------------------|-------------------|
| to | Bondurant-Farrar | 1 student |
| | Dallas Center-Grimes ... | 1 student |
| | Des Moines | 34 students |
| | Indianola | 16 students |
| | Norwalk | 3 students |
| | Southeast Polk | <u>4 students</u> |
| | Total | 59 students |

| | 2005-06 | 2006-07 | 2007-08 | 2008-09 | 2009-10 | 2010-11 |
|-----------------------|---------|---------|---------|---------|---------|---------|
| Open Enrollment "IN" | 52 | 67 | 69 | 96 | 127 | 139 |
| Open Enrollment "OUT" | 51 | 60 | 71 | 64 | 56 | 59 |

Special Education

It is the responsibility of each eligible individual's resident local education agency to provide or make provision for appropriate special education and related services to meet the requirements of state and federal statutes and rules.

Each local education agency shall ensure the provision of full educational opportunity to children requiring special education.

Following are lists of the Tuition In and Tuition Out special needs students:

TUITIONED IN

| | | |
|------|----------------------|------------------|
| from | Des Moines | 11 students |
| | Knoxville | 1 student |
| | Pleasantville | 1 student |
| | Southeast Polk | <u>1 student</u> |
| | Total | 14 students |

TUITIONED OUT

| | | |
|----|------------------------|-------------------|
| to | Ames | 3 students |
| | Des Moines | 9 students |
| | DMACC | 2 students |
| | Indianola | 2 students |
| | Manson NW Webster .. | 1 student |
| | Woodward Granger | <u>2 students</u> |
| | Total | 19 students |

A total of 230 students were served in the special education program during the 2010-11 school year by 20 teachers and 23 associates.

In addition, \$87,889 Part B funding had been received during the 2010-2011 fiscal year. These Part B funds are federal financial assistance dollars under the provisions of the Individuals with Disabilities Education Act and are used to help defray the costs of educating students with disabilities.

Special Programs

EARLY CHILDHOOD

The district was a recipient of a Statewide Voluntary Preschool Grant for the 2010-2011 school year in the amount of \$349,540. Expenditures totaled \$288,890.46 leaving a carryover balance of \$119,654.74. The program, employing three teachers and classroom associates, served 100 regular education students. Because of the receipt of grant funds, the district is able to offer the preschool program and provide transportation at no cost to the parents. The district offers a morning and an afternoon session with classes meeting 4 days a week.


TALENTED AND GIFTED

Iowa Code section 257.43 requires each school district to incorporate talented and gifted programming into its comprehensive school improvement plan. Iowa Code section 257.46 specifies that the funding formula for the talented and gifted program be a combination of the state's allowable growth funds and local district funds. Expenditures for this program during the 2010-2012 school year totaled \$132,545.85. One hundred eighty-one students were part of the district's program. The program is served by two full-time teachers.


HOME SCHOOL

Twenty-eight students were served in the district's home school assistance program and dual enrolled during the 2010-2011 school year. The district does provide the services of a home school coordinator to those students and families. Part of the district's property tax funds are allocated to the home school program. Expenditures for the 2010-2011 home school program totaled \$32,639.28.


Student Information



HIGH SCHOOL
Grades 9 - 12
 Student/FTE
 Teacher Ratios
 15.3 to 1



MIDDLE SCHOOL
Grades 6 - 8
 Student/FTE
 Teacher Ratios
 17.0 to 1



HARTFORD UPPER ELEMENTARY
Grades 4 - 5
 Student/FTE
 Teacher Ratios
 15.9 to 1



CARLISLE ELEMENTARY
Grades PS - 3
 Student/FTE
 Teacher Ratios
 17.5 to 1

**STUDENT POST GRADUATE FOLLOW-UP
 CLASS OF 2011**

| | |
|--------------------------------|----|
| Attending 4 year college | 49 |
| Attending 2 year college | 38 |
| Other training | 2 |
| Employment | 7 |
| Active military services | 4 |
| Unknown | 3 |

Faculty Breakdown



HIGH SCHOOL

of Teachers and Qualifications

| <u>BA</u> | <u>BA+15</u> | <u>BA+30</u> | <u>BA+45</u> | <u>MA</u> | <u>MA+15</u> | <u>MA+30</u> | <u>MA+45</u> |
|-----------|--------------|--------------|--------------|-----------|--------------|--------------|--------------|
| 12 | 5 | 4 | 3 | 8 | 2 | 0 | 0 |



MIDDLE SCHOOL

of Teachers and Qualifications

| <u>BA</u> | <u>BA+15</u> | <u>BA+30</u> | <u>BA+45</u> | <u>MA</u> | <u>MA+15</u> | <u>MA+30</u> | <u>MA+45</u> |
|-----------|--------------|--------------|--------------|-----------|--------------|--------------|--------------|
| 4 | 5 | 4 | 5 | 6 | 1 | 1 | 1 |



UPPER ELEMENTARY

of Teachers and Qualifications

| <u>BA</u> | <u>BA+15</u> | <u>BA+30</u> | <u>BA+45</u> | <u>MA</u> | <u>MA+15</u> | <u>MA+30</u> | <u>MA+45</u> |
|-----------|--------------|--------------|--------------|-----------|--------------|--------------|--------------|
| 6 | 4 | 2 | 0 | 3 | 1 | 0 | 2 |



ELEMENTARY

of Teachers and Qualifications

| <u>BA</u> | <u>BA+15</u> | <u>BA+30</u> | <u>BA+45</u> | <u>MA</u> | <u>MA+15</u> | <u>MA+30</u> | <u>MA+45</u> |
|-----------|--------------|--------------|--------------|-----------|--------------|--------------|--------------|
| 7 | 4 | 3 | 4 | 16 | 6 | 0 | 0 |

| YEARS OF EXPERIENCE | # OF TEACHERS |
|---------------------|---------------|
| 0-5 years | 41 |
| 6-10 years | 37 |
| 11-15 years | 21 |
| more than 15 years | 20 |

Absences

| | # of Employees w/benefit | Sick Leave | Family Sick Leave | Personal | Bereave-Family | Bereave Friend | Professional | Average Days Absent Per EE |
|--|--------------------------|------------|-------------------|----------|----------------|----------------|--------------|----------------------------|
| Faculty | 131 | 991.5 | 164 | 237.5 | 66.5 | 40 | 391.5 | 13.18 |
| Assoc/ Secretary | 10 | 20.5 | 5 | 6 | 0 | 1.5 | 4.5 | 3.25 |
| Nutrition | 7 | 115.5 | 4 | 7 | 0 | 0 | 0 | 17.50 |
| Cust/Bus Driver | 34 | 187.5 | 38 | 55.5 | 18 | 6 | 0 | 7.85 |
| | | | | | | | | |
| AVERAGE DAY/DAYS OF ABSENCE PER EMPLOYEE | | | | | | | | |
| Faculty | | 7.6 | 1.3 | 1.8 | 0.5 | 0.3 | 3.0 | 13.18 |
| Associate/Secretary | | 2.1 | .5 | .6 | 0 | .2 | .5 | 3.25 |
| Nutrition | | 16.5 | .6 | 1.0 | 0 | 0.0 | 0.0 | 17.5 |
| Custodian/Bus Driver | | 5.5 | 1.1 | 1.6 | .5 | .2 | 0.0 | 7.85 |

| Unused Leave | # of Employees w/benefit | Sick Leave | Personal Leave |
|------------------|--------------------------|------------|----------------|
| Faculty | 131 | 8,201 | 171.5 |
| Assoc/ Secretary | 10 | 563.5 | 11.5 |
| Nutrition | 7 | 487 | 12.5 |
| Cust/Bus Driver | 34 | 1384.5 | 34.5 |

Extra Teacher Compensation \$s

In an effort to maintain and advance the educational excellence in the state of Iowa and to respond to teacher shortages and declining comparability of Iowa teachers' salaries with other states, the state of Iowa has established several funding sources listed below with the 2010-2011 allocation amounts received.

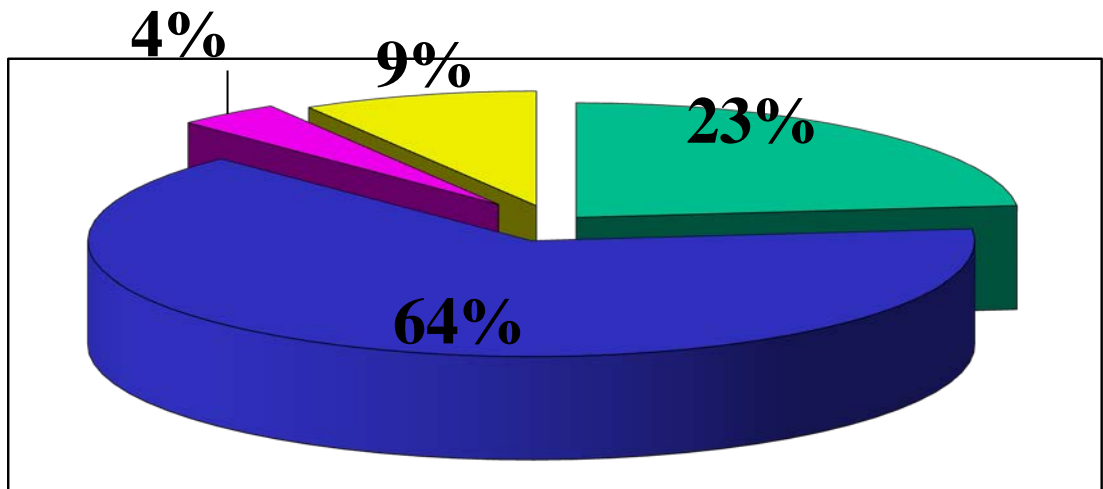
| State Money | Description | Amount |
|---|---|------------|
| TSS (Teacher Salary Supplement) | Extra teacher compensation, paid to teachers This compensation was broken down into Ph II money paid twice during the year and Teacher Quality money paid monthly. | 858,696.00 |
| Professional Development – Regular & Core Curriculum/ Extra Professional Development Day | Funds paid to teachers for time spent on professional development outside the normal working day plus registration fees for workshops and presenters. Per diem compensation for an extra professional development day also comes from this money. | 88,269.00 |
| Teacher Mentoring | Mentors are assigned to first and second year teachers to provide help and support. Each mentor receives \$1,000 for their service. | 7,800.00 |



Revenues

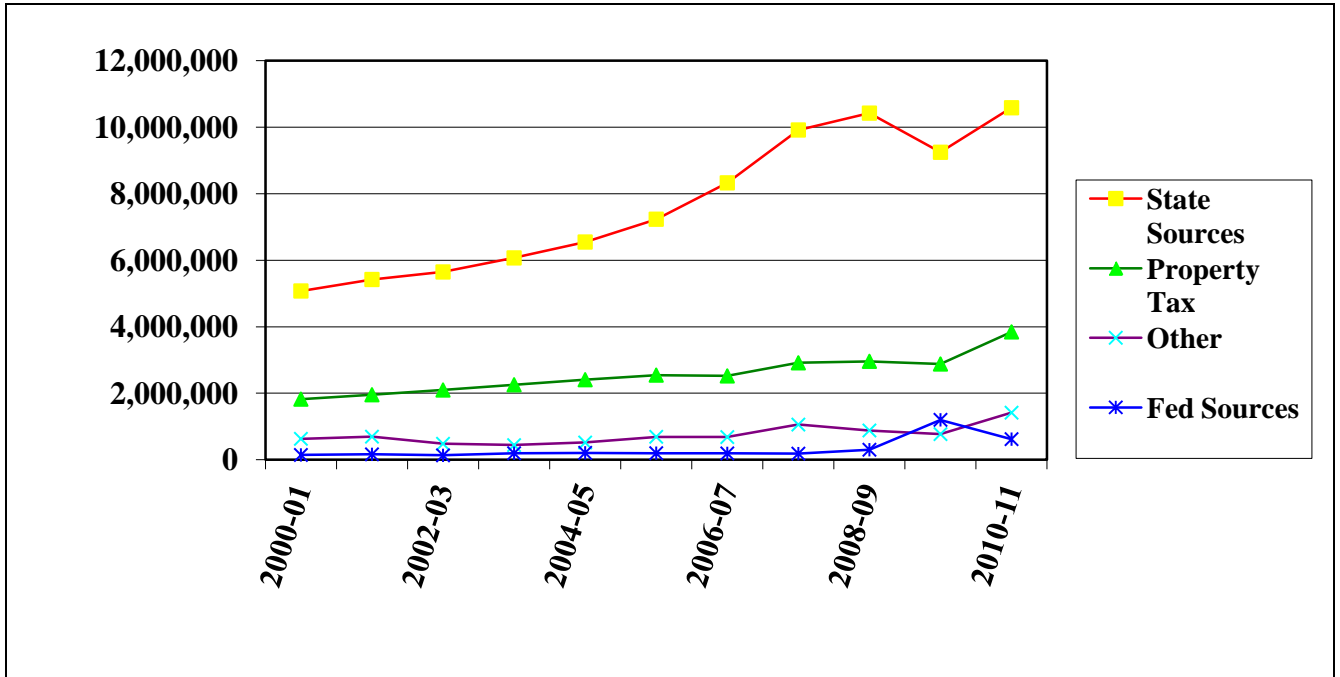
SUMMARY OF FINANCING FOR GENERAL FUND

| | |
|-----------------|---------------|
| Property Tax | \$ 3,844,767 |
| State Sources | \$ 10,584,728 |
| Federal Sources | \$ 619,770 |
| Other Funding | \$ 1,415,328 |



■ Property Tax ■ State Sources ■ Federal Sources ■ Other Funding

Actual Revenue History General Fund



What is included in the revenue groupings?

State Sources

State Aid, AEA Flow thru, Teacher Compensation, Early Intervention, Non-public Transportation Aid, Vocational Aid

Property Tax

Warren and Polk County Taxes: regular, mobile home

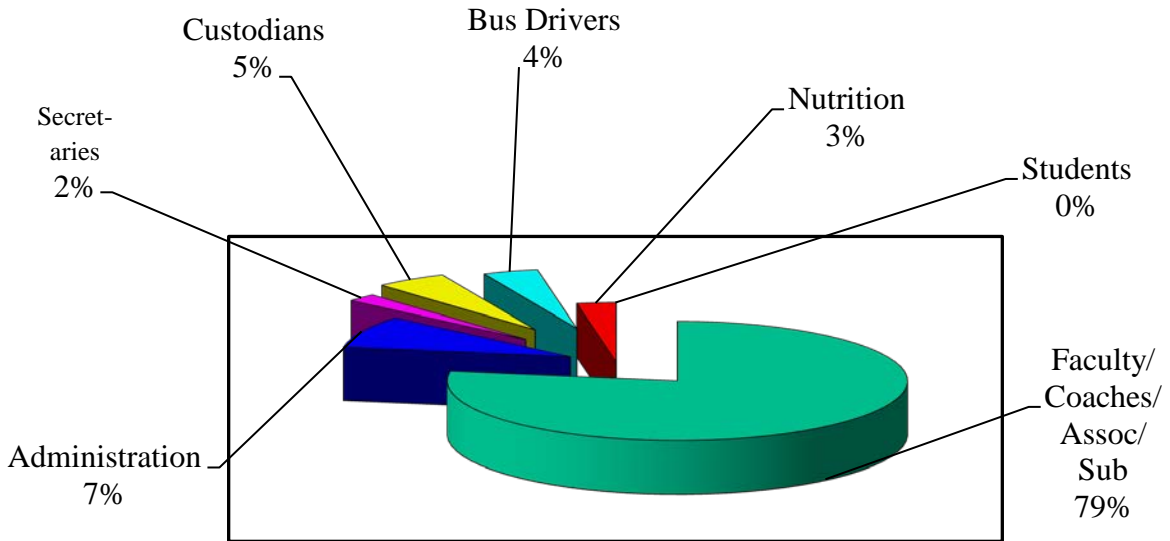
Other:

Open Enrollment, Book Rental Fees, Discretionary Transportation, Interest Earnings, Donations, Miscellaneous

Federal Sources:

Title I, Title V, Title VI, Special Education Part B, Carl Perkins, ARRA Money

Employee Salaries



| | |
|---------------------------------|--------------|
| Faculty/Coaches/Assoc/Sub | \$ 7,029,509 |
| Administration | \$ 784,901 |
| Secretaries | \$ 190,115 |
| Custodians | \$ 455,044 |
| Bus Drivers | \$ 350,797 |
| Food Service | \$ 247,583 |
| Students | \$ 1,716 |

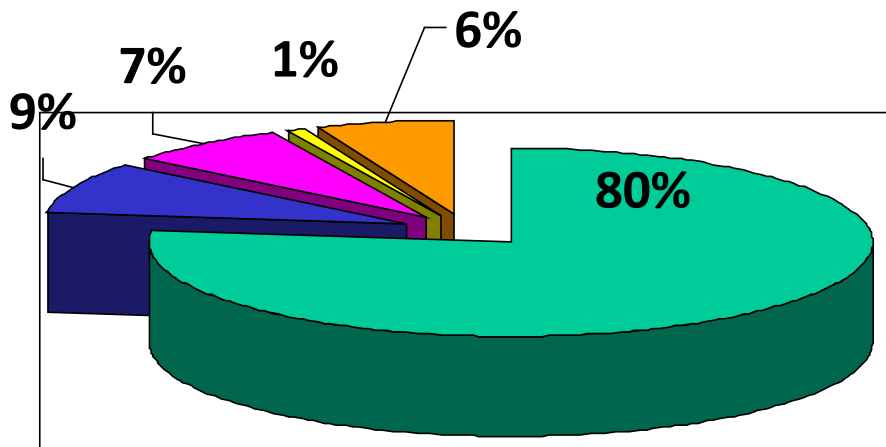
Salaries and benefits in the General Fund constituted 80% of the annual expenditures of the General Fund.

During 2010-11 there were 363 full and part-time employees of the School District.

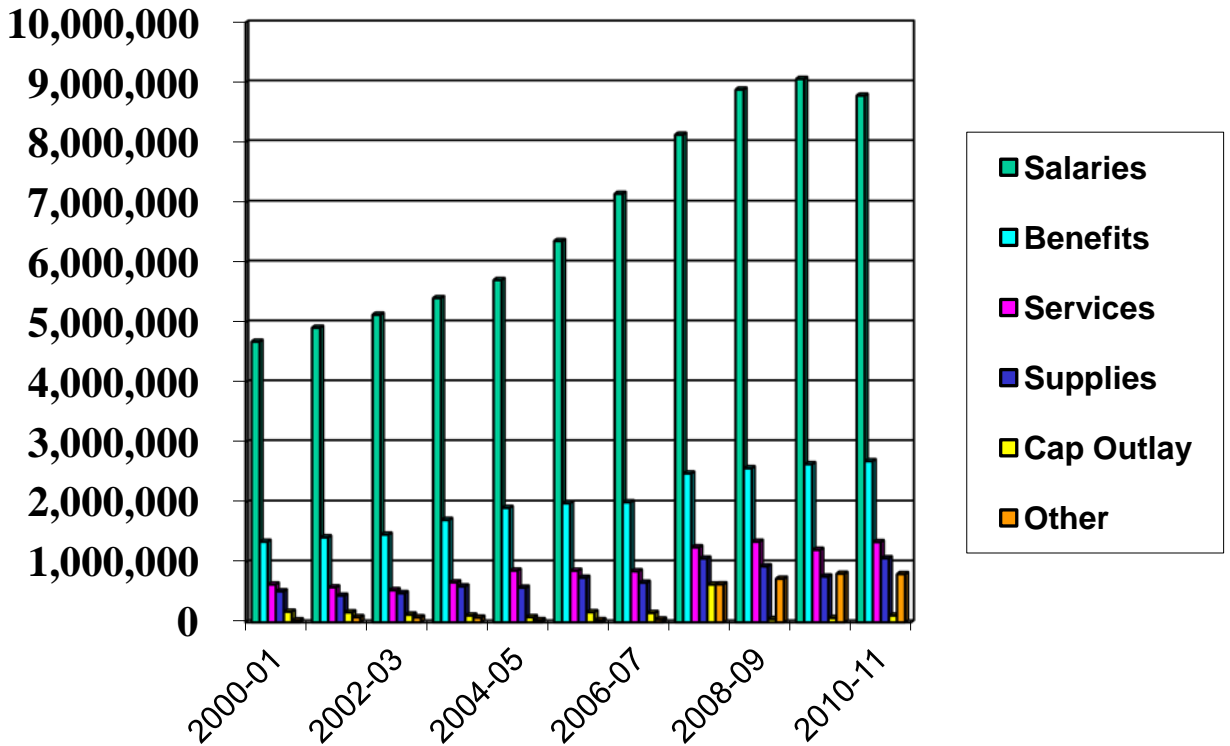
Expenditures

Summary of Expenditures - General Fund

| | |
|----------------|-----------|
| Salaries | 8,779,081 |
| Benefits | 2,683,144 |
| Services | 1,341,292 |
| Supplies | 1,070,366 |
| Capital Outlay | 114,897 |
| Other | 921,375 |



Expenditure History General Fund



Expenditures in the General Fund increased in the areas of services, supplies and capital outlay due to increased enrollment.

2010-2011 Actual Expenditures

(All Funds - by Program)

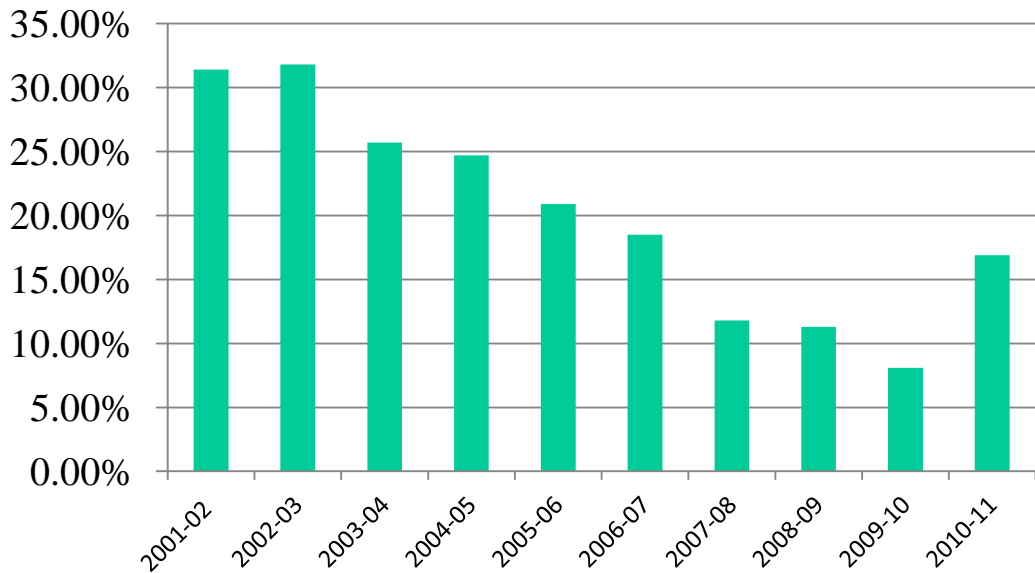
| PROGRAM AREA | ACTUAL | BUDGETED | UNDER/OVER |
|--------------------------|---------------------|---------------------|---------------------|
| INSTRUCTION | \$ 9,658,704 | \$10,440,000 | \$ 781,296 |
| TOTAL SUPPORT SERVICES | \$ 5,311,151 | \$ 5,842,000 | \$ 530,849 |
| NON-INSTRUCTION PROGRAMS | \$ 977,323 | \$ 990,000 | \$ 12,677 |
| OTHER | \$ 4,018,901 | \$ 4,382,563 | \$ 363,662 |
| TOTALS | \$19,966,079 | \$21,654,563 | \$ 1,658,484 |

PROGRAM AREAS DEFINED

| | |
|-------------------|---|
| INSTRUCTION | Salaries, Benefits, Educational Materials, Adult Education |
| SUPPORT SERVICES | Guidance, Media, Technology, Central Supply, Printing, Human Resources, Administration, Maintenance, Transportation |
| NON-INSTRUCTIONAL | Food Service, Building Trades |
| OTHER | Architecture/Engineering, Site and Building Improvements, Debt Service, AEA Flow Thru |

Solvency Ratio

Solvency Ratio History



Solvency Ratio is an indicator of the financial position of the district. It is calculated by dividing the unassigned fund balance by the general fund revenues.

Target solvency ratio: 5 to 10 percent

Acceptable ratio: 0 to 5 percent

Solvency alert: -3 to 0 percent

Solvency concern: lower than -3 percent

Transportation

The average number of students transported by the district was 1,243 for the 2010-2011 school year.

Average cost for transportation per student was \$470.37.

Average cost per mile traveled is \$5.22.

Eighteen families were reimbursed for private school transportation.

The transportation fleet consists of 21 vehicles used for transporting students.

Miles traveled with all buses and suburbans:

- Regular route & non-route miles - 143,452

Discretionary transportation was introduced during FY04. Revenue received for this added service amounted to \$20,246.46 in the 2010-2011 school year. A total of 121 students signed up to use this program. Current rate for this service is \$90 per student per quarter or \$150 per family per quarter. The fees paid fund the costs of the service.



Nutrition

A total of 230,048 student lunches were served during the 2010-2011 school year of which 46,623 were free and 18,649 were reduced. The district served 45,495 student breakfasts with 20,480 being free and 5,225 reduced.

The amount of federal aid received for the breakfast and lunch program was \$254,198. The amount of state aid received for the breakfast and lunch program totaled \$7,259. The district received commodities valued at \$36,054.

Meal prices were increased for the 2010-2011 school year.

Students: Breakfast \$1.25 Lunch \$1.90

Adults: Breakfast \$1.25 Lunch \$2.50



Building Trades

CONSTRUCTION CLASS

The Carlisle Community School District has been very fortunate to have instructors who have worked with students who are interested in construction. A new building has been constructed each year for the past 30 years. Mr. Wayne Fleishman instructed the class for the first 16 years followed by Mr. Al Stoner for the next 13 years. Mr. Jesse Seufferer took over the class in 2007-2008. Following is list of the addresses of the buildings:

| | |
|-----------|--|
| 1978-1979 | 720 Market St., Carlisle |
| 1979-1980 | 120 N. 6 th St, Carlisle |
| 1980-1981 | The Carlisle Public Library |
| 1981-1982 | 24 Park St., Carlisle |
| 1982-1983 | 222 Park St., Carlisle |
| 1983-1984 | 610 Market St., Carlisle |
| 1984-1985 | 635 9 th St., Carlisle |
| 1985-1986 | 945 9 th St., Carlisle |
| 1986-1987 | 835 Terrace Dr., Carlisle |
| 1987-1988 | 725 Terrace Dr., Carlisle |
| 1988-1989 | 625 Market St., Carlisle |
| 1989-1990 | 1325 Hardin Dr., Carlisle |
| 1990-1991 | 225 Main St., Carlisle |
| 1991-1992 | 530 Main St., Carlisle |
| 1992-1993 | 45 Elm St., Carlisle |
| 1993-1994 | 65 Elm St., Carlisle |
| 1994-1995 | 425 Highland Dr., Carlisle |
| 1995-1996 | 415 Highland Dr., Carlisle |
| 1996-1997 | 1290 S. 5 th Street, Carlisle |
| 1997-1998 | 215 N. 6 th St., Carlisle |
| 1998-1999 | 3000 E. Diehl Ave, Des Moines |
| 1999-2000 | 840 William Nowles Circle, Carlisle |
| 2000-2001 | 535 Veterans Memorial Dr., Carlisle |
| 2001-2002 | 615 Veterans Memorial Dr., Carlisle |
| 2002-2003 | 605 Veterans Memorial Dr., Carlisle |
| 2003-2004 | 715 William Nowles Dr., Carlisle |
| 2004-2005 | 830 William Nowles Circle, Carlisle |
| 2005-2006 | 1130 Lyle Murphy Drive, Carlisle |
| 2006-2007 | 1105 Lyle Murphy Drive, Carlisle |
| 2007-2008 | 1140 Bellflower Drive, Carlisle |
| 2008-2009 | 1130 Bellflower Drive, Carlisle |
| 2009-2010 | 1120 Bellflower Drive, Carlisle |
| 2010-2011 | 1035 Bellflower Drive, Carlisle |

The most recent house was sold for \$182,500. The houses are not priced to make a substantial profit. Only enough to cover expenses and to help defray cost of tools and equipment to use in the trade. A storage garage has been built with some of the profits to house their equipment along with instructional materials for the CAD Lab .

Insurance

2010-2011 Insurance Information

| Company | Insurance Type | Deductible | Coinsurance | Limits | Add'l Info | Cost |
|------------------------------------|--------------------|---------------|-------------|-----------------|-------------------|------------|
| EMC | Property | 250 | 90% | 36,669,595 | Replacement Costs | 32,088.00 |
| | General Liability | 1,000 | | 1,000,000 | | 4,737.00 |
| | Auto | 100/Collision | | 1,000,000 | | 10,553.00 |
| | Crime | \$0 - \$1,010 | | 1,500 - 101,000 | | 963.00 |
| | Workers Comp | | | 500,000 | | 120,555.00 |
| | Umbrella | | | 5,000,000 | | 5,560.00 |
| | Errors & Omissions | | | 1,000,000 | | 4,009.00 |
| | Pollution | | | 500,000 | | 725.00 |
| | Builders Risk | 1,000 | | 200,000 | | 317.00 |
| Group Excess - IASB Safety Program | | | 15,000,000 | | 2,973.00 | |

| | | | | | |
|----------|---------------|------|------------------------|--------|----------|
| Wellmark | Health – PPO | 250 | 90% | Single | 514.83 |
| | | 500 | | Family | 1,287.08 |
| | Health – HDHP | 1000 | 100% | Single | 441.54 |
| | | 2000 | (after deductible met) | Family | 1,103.85 |
| | Dental | | | Single | 32.90 |
| | | | | Family | 89.90 |

| | | | | | |
|---------------------------|------|-------------------|--|--|------|
| EMC National Life Company | Life | \$50,000 Coverage | | | 8.00 |
|---------------------------|------|-------------------|--|--|------|

| | | | | | |
|--------------------|----------------------|--|--|--|---------------|
| Standard Insurance | Long-term disability | | | | .0023/\$1,000 |
|--------------------|----------------------|--|--|--|---------------|

Quick Facts

Public education is an investment in the future

- 2010-2011 regular program district cost per pupil was \$5,883, an increase of \$115 from 2009-10
- Total school tax levy for 2010-2011 was 20.97493 per \$1,000 of taxable valuation, an increase of about \$1.50 from 2009-10.



- Taxable valuation for 2010-2011 was:

| | |
|----------------------|--------------------|
| Polk County | 70,026,495 |
| <u>Warren County</u> | <u>175,027,853</u> |
| Total | 245,054,348 |

This is an increase of 4.23% in Warren County, 12.88 % in Polk County and 6.70% increase overall.

*Your support makes
educational
opportunities available*