

Accessories, Hair, and Make-up

Jewelry must be tasteful; SMOD colors, silver, gold, pearl, or crystal are acceptable;

Earrings and any other piercings should be a length and size that will not represent a safety hazard or distraction to learning.

Belts must be worn, in a solid color, if the product has been manufactured with belt loops.

Hair must not pose a distraction due to color or style; it may not impair vision;

No heavy chains, or mardi gras style beads.

No sweatbands, scarves, hats, caps, hair nets, skull caps, doo-rags, bandanas, or inappropriate headwear;

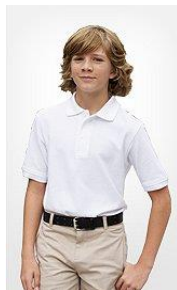
Sunglasses may not be worn in the building.

No undergarments may be visible;

Good taste and moderation should govern make-up and nail polish;

All grooming must be done at home or in the restrooms;

Purses, bags, etc... may not be kept in the classrooms



SMOD FREE DAYS

SMOD FREE DAYS are ALWAYS announced. On these announced days, we expect our students to be dressed for an academic atmosphere of purposeful learning and responsible citizenship. The following guidelines will be in place on SMOD Free Days:

- All clothing must be worn in an appropriate and tasteful manner, and as originally intended by the designer. For example, belts (if worn) must be worn around the waist; shirts or headbands will not be worn around the neck; suspenders or overalls will not be worn with straps down; shirts must be buttoned so chest or T-shirts are not exposed, shoes must be fastened/tied; etc. Clothes may not be worn inside out or backward.
- Shoulder straps must be at least 3 inches wide.
- Abusive, suggestive or profane language; symbols of illegal substances; or any other words, symbols or slogans that disrupt the learning environment may not be worn on clothing or as jewelry.
- Students are required to wear shoes at all times for health and safety reasons.

The following items **SHOULD NOT** be worn at school:

- Bedroom shoes/slippers or pajamas; flip-flops (regardless of thickness of sole); shower/spa shoes. Shoes with heels higher than 2 inches are not appropriate for the educational environment.
- Pants worn below the waist or showing clothing/underwear beneath the main outerwear. "Low rider" pants that reveal skin are not acceptable. This also means no sagging pants with the crotch closer to the knees than to their intended location. Pants must stay up without assistance - if you have to hold the waistband while walking to keep your pants on, your pants do not fit.
- Leggings or jeggings without a top that is at least fingertip length.
- Over-sized shirts and t-shirts that fall below the finger tips are not permissible to wear.
- Shorts and skirts need to be fingertip length or longer - even if you are wearing leggings or tights underneath.
- Shirts that expose the stomach or are low cut in front, back, or sides; excessively tight or see-through shirts.
- Spaghetti straps or strapless tops.
- Frayed or ripped clothing - even if you wearing leggings underneath.

TMS SMOD EXPECTATIONS



2018 - 2019
STANDARD MODE
OF DRESS

400 UNITY STREET
Thomasville, NC 27360
Phone: 336-474-4120
Fax: 336-472-5081

<http://tms.tcs.k12.nc.us/>

Standard Mode of Dress

Top Colors – Black, Gray, Red, and White

Bottom Colors – Black and Khaki



SMOD PANTS, SKIRTS, SHORTS, CAPRI PANTS, SKORTS, OR JUMPERS

Color: Khaki or Black

Style: Must be dress or casual (no sweat pants, spandex/yoga pants, or pajama/lounge wear allowed);

Wear: Pants must be worn at normal length; Shorts, Skirts, Capris, Skorts or Jumpers must touch the knees; All must be worn at natural waist area; no hip hugging or excessively tight fitting pants; Items must be hemmed and cannot drag on the floor;

No decorative adornments on clothing. Ex: extra stitching, decorative pocket flaps, tear offs, holes, etc. No undergarments may be visible.

SMOD SHIRTS

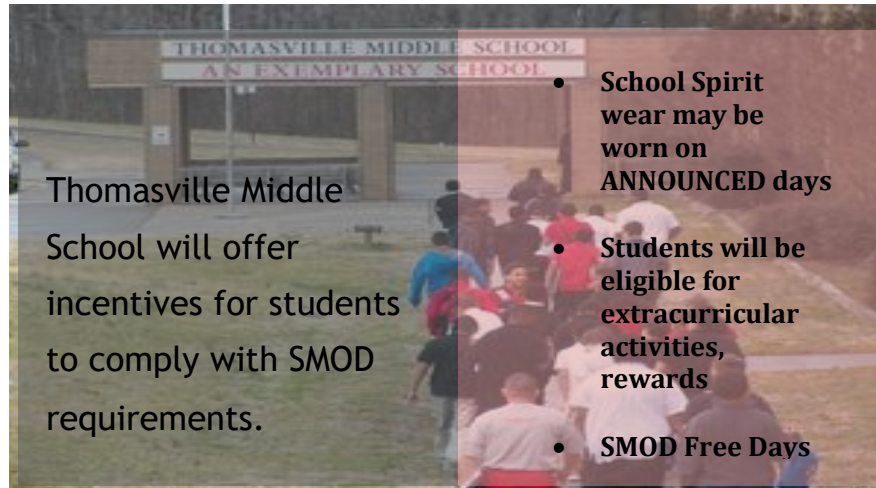
Type: Polo style, turtleneck, or Oxford/ button down; long sleeve or short sleeve shirts/blouse (no sleeveless), shirts must have a collar

Colors: Students may choose from **solid white, solid red, solid black or solid gray**

Wear: No undergarments may be visible; Button down shirts - only the top two buttons may be left unbuttoned; No visible cleavage for girls; Undershirts may be worn under a polo style or button down shirt; No see through material allowed

Emblems: Must be no larger than a credit card, including only trademark symbols – no alterations may be made

INCENTIVES



- School Spirit wear may be worn on ANNOUNCED days
- Students will be eligible for extracurricular activities, rewards
- SMOD Free Days

Consequences for breaking SMOD

Consequences for not following the Standard Mode of Dress expectations for students at Thomasville Middle School may include the following:

- Opportunity for immediate correction*
- Wear wrist bands for minor infractions*
- Conference with a counselor/administrator*
- Parent contact*
- Silent lunch/After school detention*
- ISS/DETENTION/OSS*

All students are expected to be in SMOD.

School administration reserves the right to make judgment calls regarding attire which may be questionable.

SMOD SHOES

Type: Tie-ups, buckle-ups, athletic, sandals with ankle strap, boots or slip-ons with closed toes

Not allowed: Flip flops, slides, bedroom shoes, slip-ons with open toes, heels greater than two inches

No oversized clothing will be allowed.

SMOD OUTERWEAR

Allowed: Size appropriate light jacket, vest, pullover, or cardigan style sweater, fleece or sweatshirts

Colors: **Solid red, black, white, or gray;** must be worn at appropriate length;

Outerwear may not hang past the straddle of their pants. All other coats and jackets must be kept in lockers.