



Renewing Locally Controlled Parcel Tax Funds

**South Pasadena Unified School District
November 14, 2017**



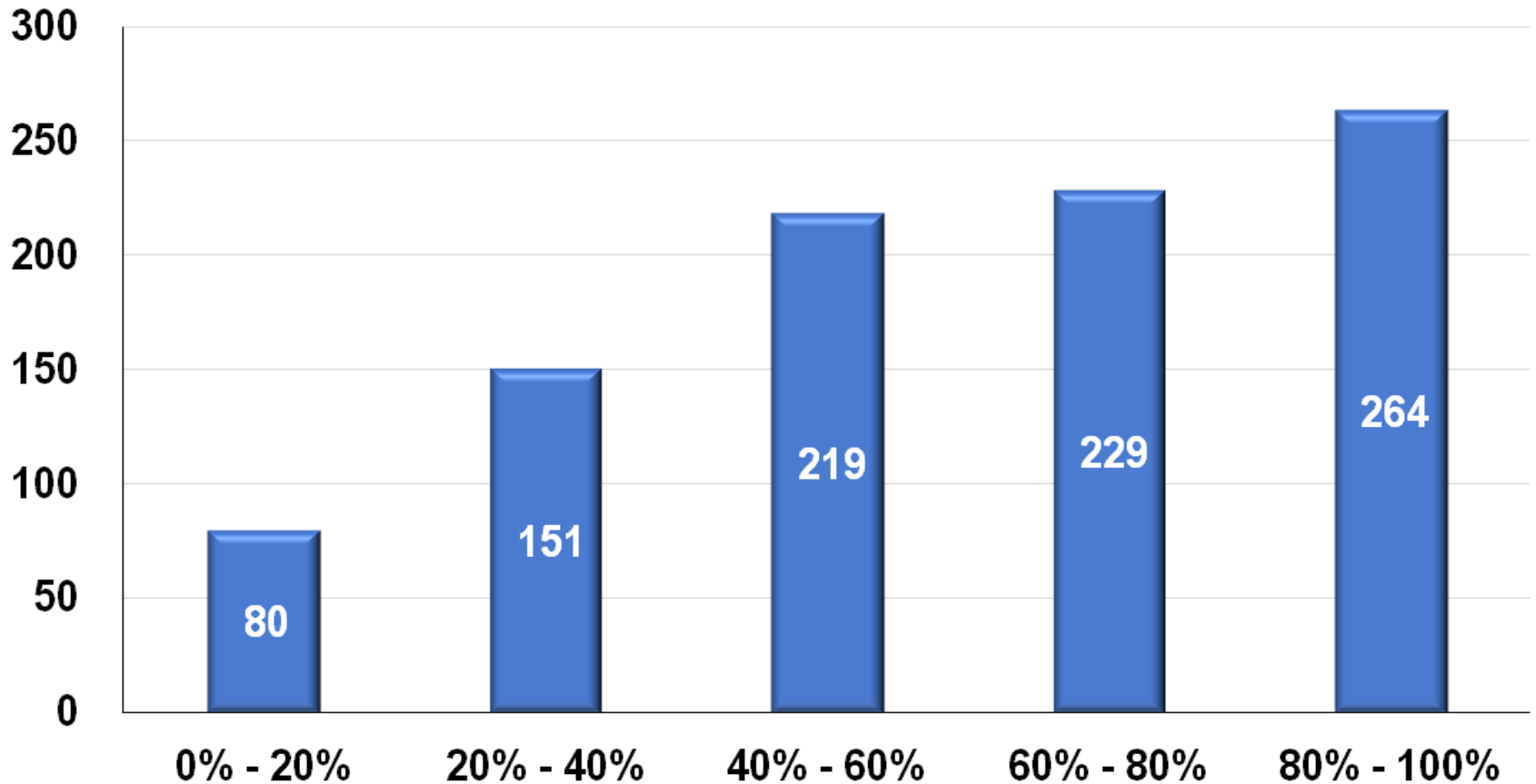
Overview

- Unless renewed by 66.7% of voters, SPUSD's school parcel tax will expire in 2018
- Expiration of parcel tax means SPUSD loses \$2.3 million in annual funding
- Without this funding: class size increases, teacher lay offs and significant reductions to academic programs



Achieve Financial Strength

Number of School Districts by UPP





Achieve Financial Strength

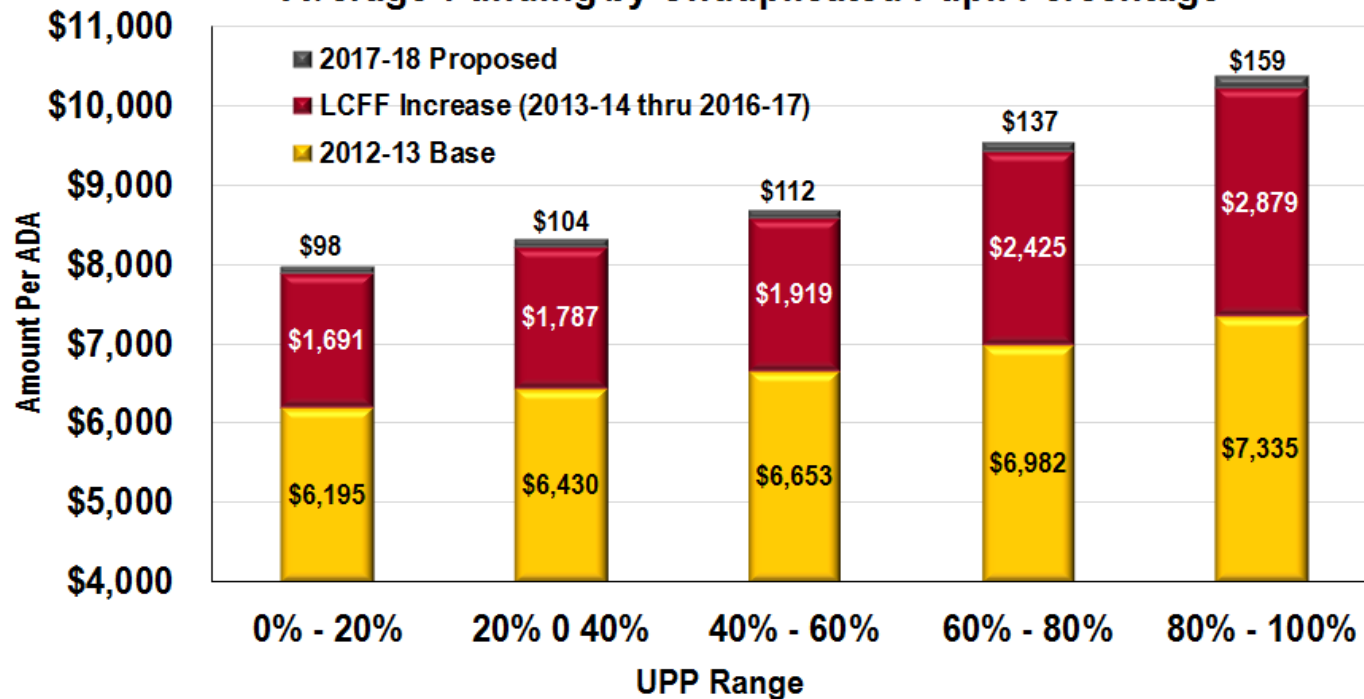


Transitioning to Full Funding of LCFF Entitlements

C-18

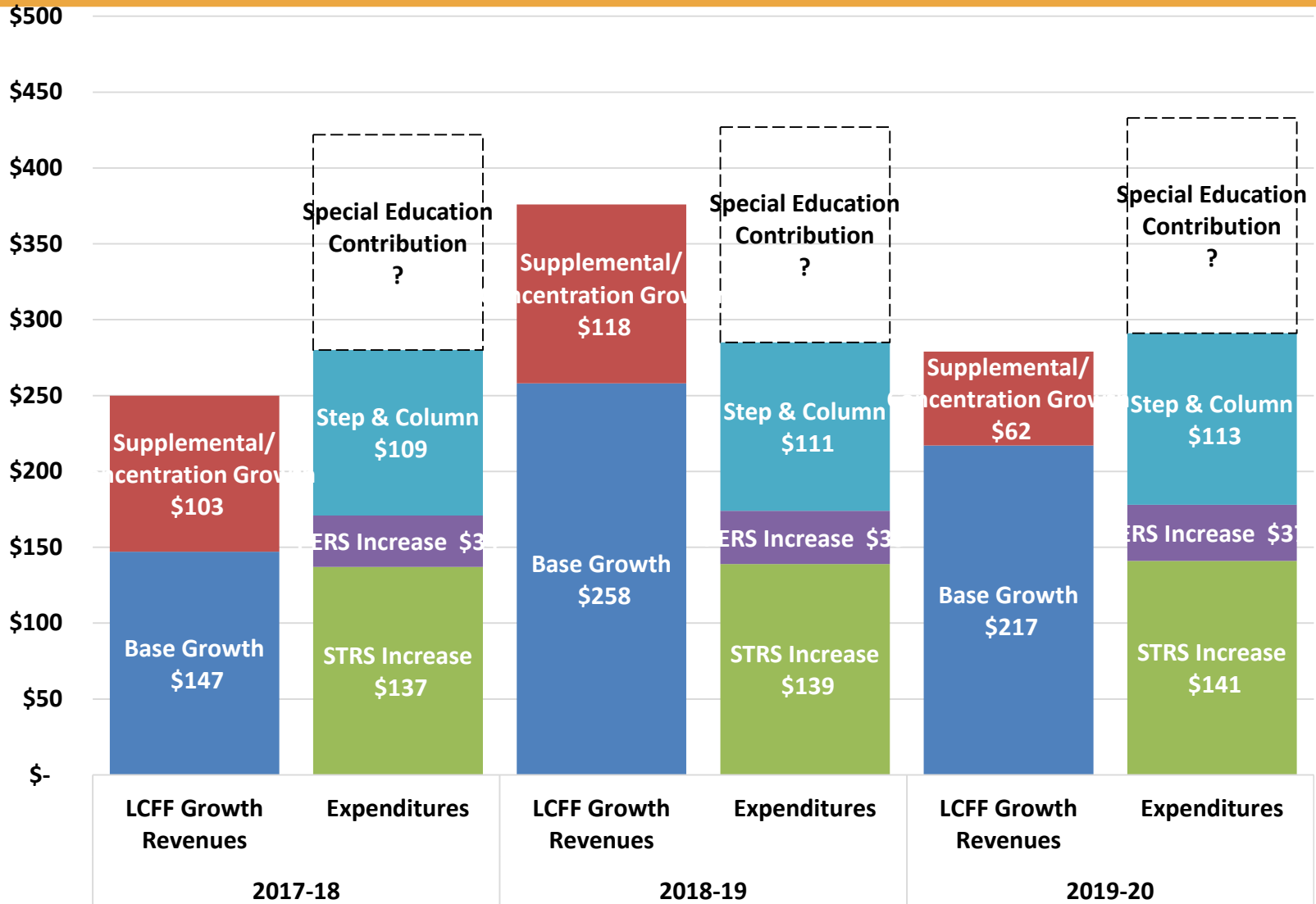
© 2017 School Services of California, Inc.

Average Funding by Unduplicated Pupil Percentage





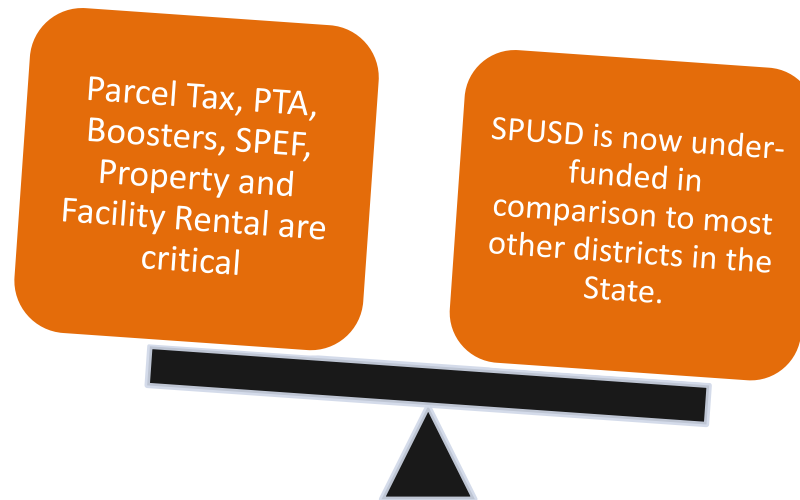
Achieve Financial Strength





Achieve Financial Strength

Significant Disparity in State Funding
Dependent Upon Local Sources





Achieve Financial Strength

Making a Difference Local Sources of Revenue

- Measure S - \$2.3 million
- Property Rental - \$350k
- SPEF - \$800k
- Booster Club – \$200k
- PTA - \$600k
- Facility Use/Rental – \$350k



Achieve Financial Strength

SPUSD Multi Year Projections (MYP) – Reserves

Reserves @ Adopted Budget				
Year	2016-17	2017-18	2018-19	2019-20
REU	3.0%	3.0%	3.0%	3.0%
Additional	4.7%	4.4%	4.7%	4.4%
Total Reserve	7.7%	7.4%	7.7%	7.4%

The above reserves are based on the assumption the parcel tax is renewed



Parcel Tax Renewal Recommendation

- Tax Rate: Renew at the current rate of \$386 per parcel
- Duration: Renew for a period of 7 years
- Exemptions: Continue elective exemptions for homeowners age 65+ and low income people with disabilities
- Accountability: Continue mandatory citizens' oversight committee and annual audits
- COLA: Add annual inflation adjustment of 3% so funding keeps pace with cost of programs and services (adds ~\$12/year)
- February 27, 2018 mail-in ballot election (similar process and timeline as 2013 renewal)



Comparison to Other School Districts

San Marino Unified School District

- \$865 per parcel plus 3% COLA for 6 years
- \$330 per parcel plus CPI COLA for 6 years
- Current combined rate: \$1,290 per parcel

Arcadia Unified School District

- \$288 per parcel for 18 years

La Canada Unified School District

- \$450 per parcel for 7 years

Palos Verdes Peninsula Unified School District

- \$374 per parcel plus CPI COLA and no expiration
- Current rate: \$446 per parcel



Inflation Adjustment

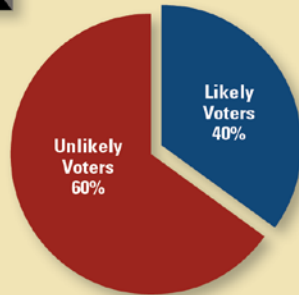
Why include an inflation adjustment?

	<u>2013-2014 Cost</u>	<u>2018-2019 Cost</u>
Elementary Arts	\$243,259	\$336,259
Elementary Library Staff	\$117,699	\$182,173

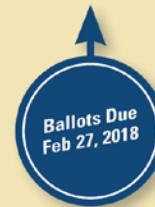


Parcel Tax Renewal Process

South Pasadena USD Parcel Tax Renewal Timeline



SPUSD Registered Voters: 16,847
Projected Voter Turnout: 6,750 (40%)
Votes Needed to Win: 4,505 (66.7%)



- Poll
- Election timing
- Tax rate
- Programs
- Political landscape
- Competing issues
- Potential controversy

- Write resolution
- Ballot question
- Non-advocacy communication
- Consensus building
- Board vote

- Private fundraising
- Direct mail
- Website
- Endorsements
- Phone banks
- Lawn signs
- GOTV

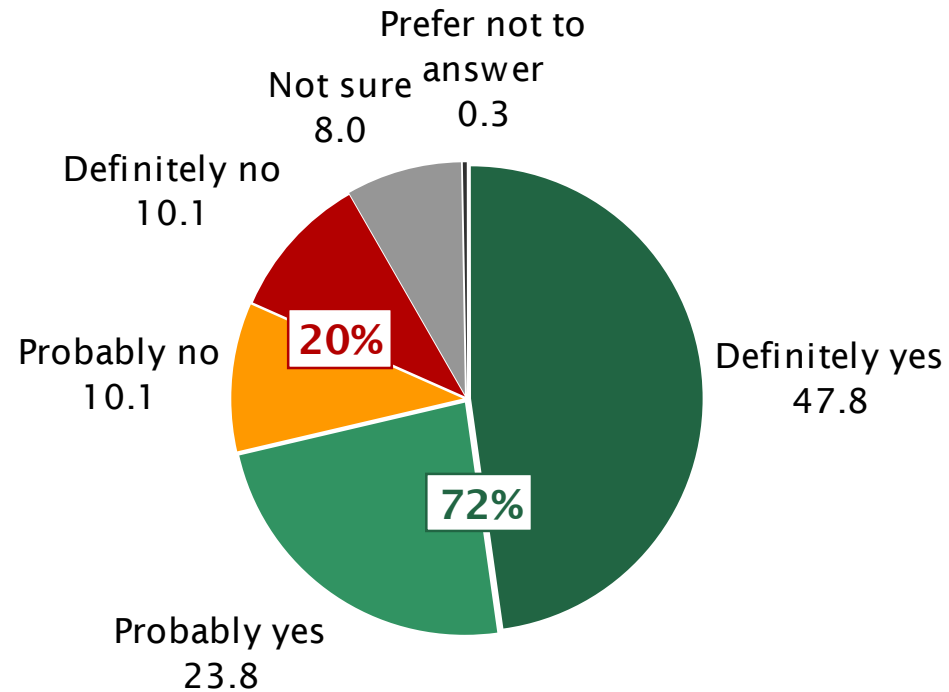


Summary of Survey Results

Initial Ballot Test: To continue funding:

- Advanced programs in math, science, reading, engineering, technology, music, and the arts to meet today's higher academic standards
- Maintain manageable class sizes to enhance student achievement
- And attract and retain highly qualified teachers

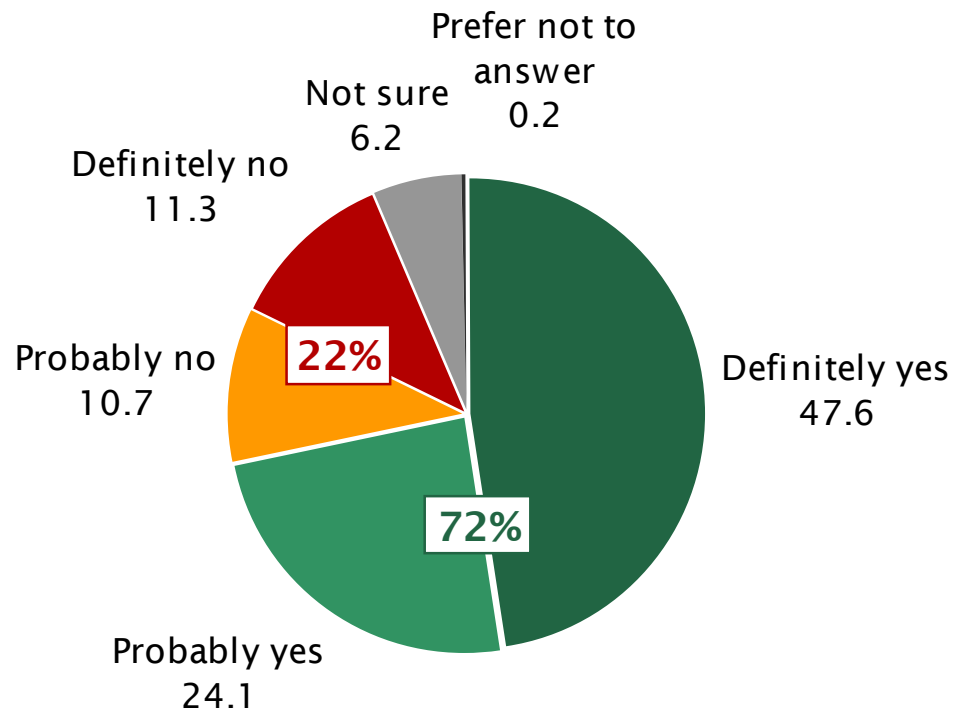
Shall the South Pasadena Unified School District renew the expiring school parcel tax at the current rate of \$386 per parcel for a period of 7 years, with annual inflation adjustments, senior exemptions, independent citizen oversight, and continuing \$2.3 million in annual school funding that can't be taken away by the State?





Summary of Survey Results

After Pro and Con Arguments:





Outreach To Date

- Parcel Tax Citizens' Oversight Committee
- PTA Meetings
- SPEF Meetings
- City/District Monthly Meetings
- Voter survey
- District Mailer
- Press Release/Website – video, FAQ, fact sheet
- School Board member outreach



Parcel Tax Renewal Recommendation

- Tax Rate: Renew at the current rate of \$386 per parcel
- Duration: Renew for a period of 7 years
- Exemptions: Continue elective exemptions for homeowners age 65+ and low income people with disabilities
- Accountability: Continue mandatory citizens' oversight committee and annual audits
- COLA: Add annual inflation adjustment of 3% so funding keeps pace with cost of programs and services (adds ~\$12/year)
- February 27, 2018 mail-in ballot election (similar process and timeline as 2013 renewal)