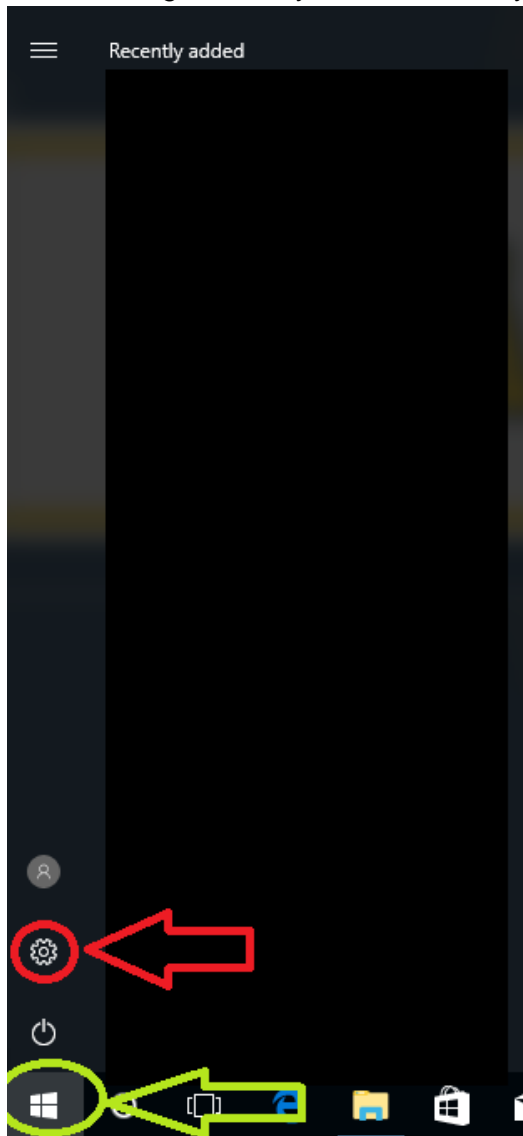


Listed Below are the steps to add a Home Printer to your computer

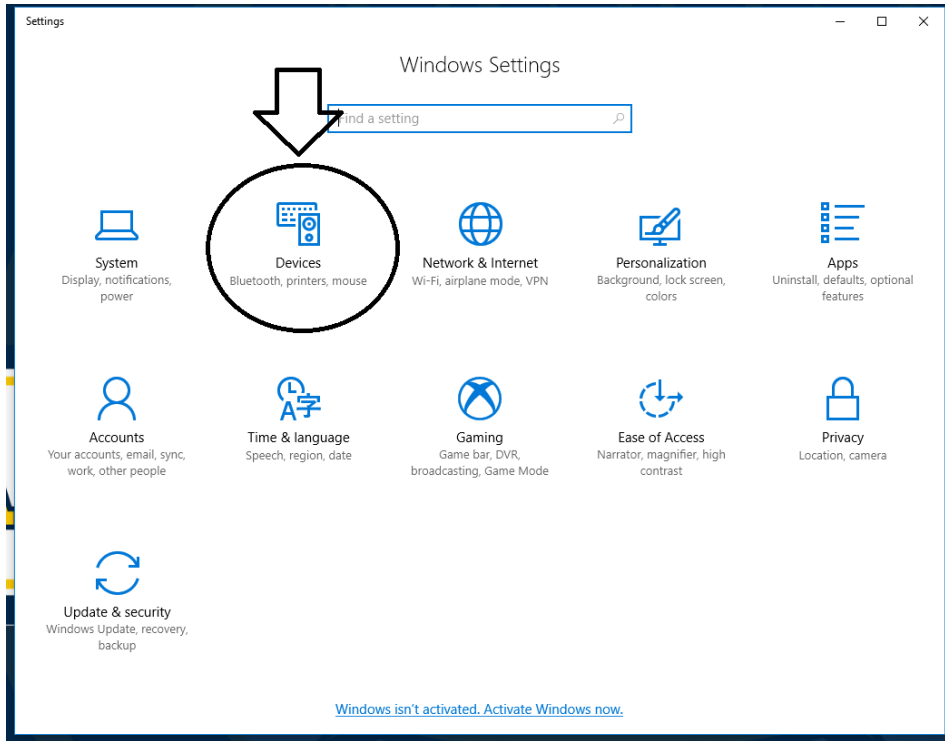
**STEP 1:**

First click on the windows logo/the start menu (marked by the green arrow and circle). After that, click on the gear like symbol to access your settings (marked by the red arrow and circle).



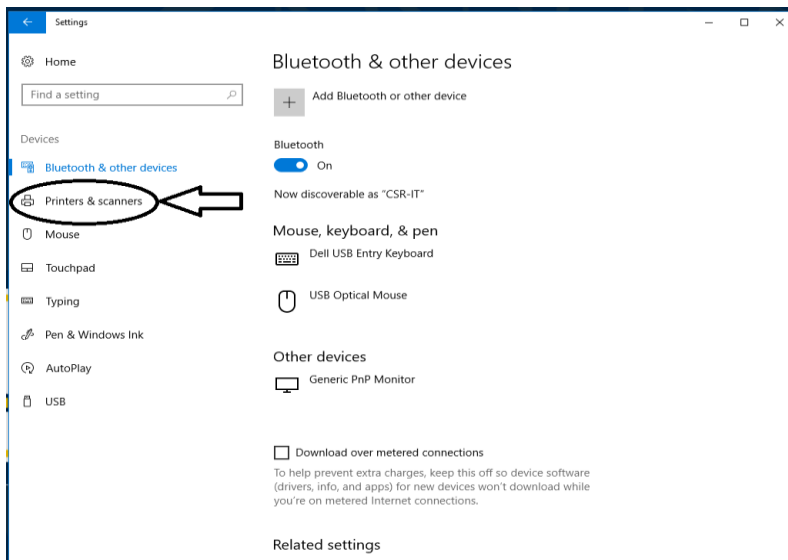
## STEP 2:

After clicking on the settings logo, click on the Devices Section of the settings on your computer.



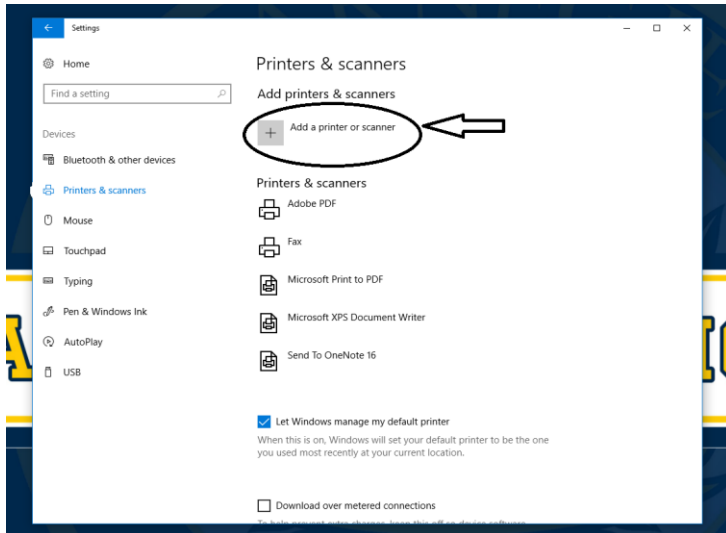
## STEP 3:

Once you click on the devices section of your settings, click on the Printers and Scanners section under the Devices category



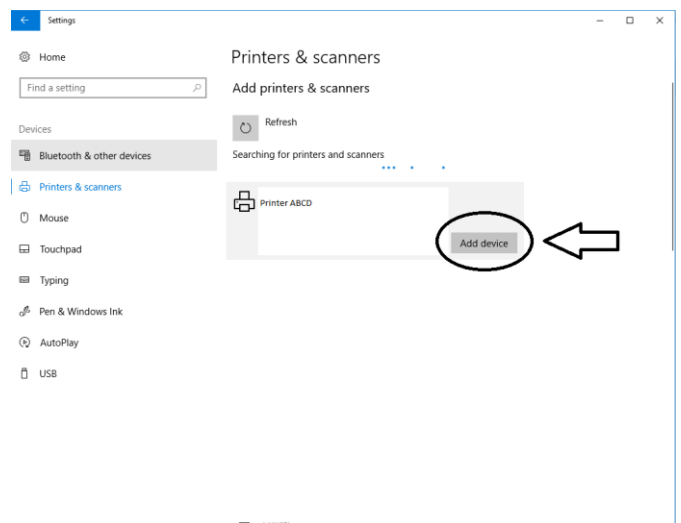
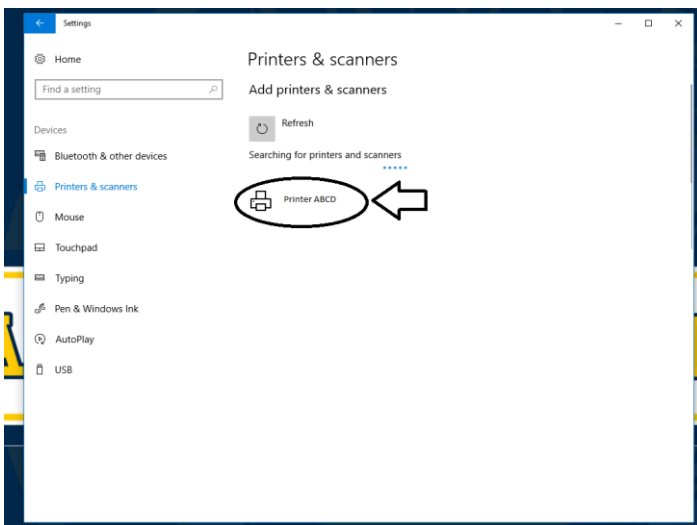
## STEP 4:

After clicking on the printers and Scanners section, you will want to click on the Add a printer or scanner option



## STEP 5:

Once you click on this section, the printer that you are trying to add should be listed in which you would then click on it and add the device



That should add the printer to your computer. **REMEMBER** The printer has to be a wireless printer for you to be able to connect to it.