



Centinela Valley Union High School District

Office of the Superintendent

14901 Inglewood Avenue, Lawndale, CA 90260
(310) 263-3201; (310) 978-9180 fax
www.centinela.k12.ca.us

NOTICE OF PUBLIC HEARING RE: APPROVAL OF EASEMENT DEDICATION JUNE 28, 2016 AT 5:55 P.M.

In accordance with Education Code sections 17556 through 17558, the Board of Directors of the Centinela Valley Union High School District (“Board”) approved Board Resolution No. 15-16/054 dated June 14, 2016 (hereinafter, the “Resolution of Intent”) declaring the Board’s intent to dedicate a utility easement to Southern California Edison across portions of that certain real property of the Centinela Valley Union High School District (“District”) generally located at 4859 West El Segundo Blvd, Hawthorne, CA 90250 (APN No.4142-012-908) - real property commonly referred to as Hawthorne High School (“Property”). The subject easement is generally depicted in the map attached and incorporated into to this notice. The Resolution of Intent further sets the date and time for a public hearing wherein the Board will consider and potentially approve the above-referenced easement dedication. As indicated in the Resolution of Intent, the public hearing will be held on June **28, 2016 at 5:55 p.m.** or as soon thereafter as the matter may be heard at the main offices of the District located at **14901 Inglewood Avenue, Lawndale, California 90260**. Interested members of the public may attend and offer verbal comment or, alternatively, may submit written comments provided such written comments are received by the Board Secretary before the conclusion of the public hearing. Formal petitions protesting the dedication must be submitted in accordance with Education Code Section 17560. The Resolution of Intent was physically posted at three locations within the District no less than 10 days prior to the date of the public hearing referenced therein, but may also be viewed at the District's internet website at: www.centinela.k12.ca.us.

For more information, please contact Ron Hacker, Assistant Superintendent of Business Services at (310) 263-3220.

(This notice will be published in a newspaper of general circulation within the territorial boundaries of the District on June 23, 2016 in compliance with Education Code Section 17558)

BOARD OF EDUCATION

Hugo M. Rojas II
President

Gloria A. Ramos
Vice-President

Rocio C. Pizano
Clerk

Marisela Ruiz
Member

Daniel D. Urrutia
Member

SUPERINTENDENT

Dr. Gregory O'Brien

Business Services

Ron Hacker
Assistant Superintendent
(310) 263-3220
(310) 644-8927 fax

Educational Services

Dr. Kelly Santos
Assistant Superintendent
(310) 263-3170
(310) 675-8179 fax

Human Resources

Michael Ono
Assistant Superintendent
(310) 263-3210
(310) 973-7983 fax

Hawthorne High School

Dr. Mark Newell
Principal
(310) 263-4400
(310) 675-7017 fax

Lawndale High School

Dr. Paula Hart Rodas
Principal
(310) 263-3100
(310) 675-8174 fax

Leuzinger High School

Dr. Pamela Brown
Principal
(310) 263-2200
(310) 675-7023 fax

Loyde High School

Dr. Jim Tarouilly
Principal
(310) 263-3264
(310) 675-8013 fax

Centinela Valley Adult School/CV Independent Study School/SBCDS

Michael Martinez
Principal
(424) 255-4066
(424) 285-5377 fax

RESOLUTION NO. 15-16/054

**A RESOLUTION OF THE BOARD OF DIRECTORS OF
THE CENTINELA VALLEY UNION HIGH SCHOOL
DISTRICT DECLARING ITS INTENT TO DEDICATE AN
EASEMENT TO SOUTHERN CALIFORNIA EDISON FOR
PUBLIC UTILITY PURPOSES**

WHEREAS, pursuant to Education Code Section 17556, the governing board of any school district may dedicate or convey to any public corporation or any public corporation engaged in the public utility business an easement to lay, construct, reconstruct, maintain and operate electrical or telephone lines over land belonging to the school district and upon such terms and conditions as the parties may agree; and

WHEREAS, the Centinela Valley Union High School District ("District") is the owner of that certain real property located at 4859 West El Segundo Blvd. in the City of Hawthorne, County of Los Angeles, State of California, reference as Assessor Parcel No 4142-012-908 and more commonly known as Hawthorne High School (hereinafter, the "Property"); and

WHEREAS, Southern California Edison ("Edison") has requested that the District grant to Edison an easement in, over, under and upon a portion of the Property by means of the form grant of easement attached hereto and incorporated herein as Attachment "A" ("Grant of Easement");

WHEREAS, the easement consists of approximately 3870 square feet, as more particularly described in Exhibit "A" of the Grant of Easement and depicted in Exhibit B to the Grant of Easement for public utility purposes (hereinafter, the "Easement Area"); and

WHEREAS, pursuant to Education Code 17557, before ordering a dedication of any such easement, the District's governing Board of Directors ("Board") shall at a regular open meeting by a two-thirds vote of all its members adopt a resolution declaring its intention to so dedicate the easement – which resolution shall also set forth a date and time for the conduct of a public hearing wherein a final decision to dedicate the easement may be made.

NOW, THEREFORE, BE IT RESOLVED BY THE BOARD OF DIRECTORS OF THE CENTINELA VALLEY UNION HIGH SCHOOL DISTRICT AS FOLLOWS:

SECTION 1. The foregoing recitals are adopted as true and correct. The foregoing recitals and referenced attachments and exhibits accurately and correctly identify the District property over which the easement shall be dedicated, the area that shall encompass the easement and the purpose of the easement.

SECTION 2. It is the Board's intent to convey a public utility easement, in, over, under and upon the Easement Area for public utility purposes.

SECTION 3. Pursuant to Education Code Section 17557 a public hearing will be

held at the regular meeting of the Board of Education to be held June 28, 2016 at 6:00 p.m. at the Board chambers located at the District Offices located at 14901 South Inglewood Avenue, Lawndale, CA 90260.

SECTION 4. Pursuant to Education Code Section 17558, no less than ten (10) calendar days before the scheduled public hearing date, the District shall post copies of this Resolution signed by the members of the Board or a majority thereof in three (3) public places within the territorial boundaries of the District.

SECTION 5. Pursuant to Education Code Section 17558, no less than five (5) calendar days before the scheduled public hearing date, the District shall publish notice of the public hearing in a newspaper of general circulation within the territorial boundaries of the District or as otherwise allowed under Education Code Section 17558.

SECTION 6. In accordance with Education Code Section 17559, at the conclusion of the public hearing the Board may approve the dedication of the subject easement by means of a second resolution which shall be approved by a two-thirds vote of all the Board members, unless a timely written petition of protest to the dedication is entered in accordance with the protest procedures set forth under Education Code Section 17560

SECTION 7. This Resolution shall take effect upon adoption. The Secretary shall certify to the adoption of this Resolution.

PASSED AND ADOPTED by the Board of the Centinela Valley Union High School District at its regular meeting on this 14th of June, 2016.

Ayes: 5 Nays: 0 Absent: 0 Abstain: 0



Hugo M. Rojas II, Board President



Rocio C. Pizano, Board Clerk

EXHIBIT "A"
SETBACK EASEMENT
INGLEWOOD AVENUE WIDENING

City of Hawthorne
County of Los Angeles
State of California

Beginning at the intersection of Inglewood Avenue (80 feet wide) and El Segundo Boulevard (100 feet wide), being the SouthWest corner of Section 9, Township 3 South, Range 14 West, San Bernardino Meridian; thence North 00°01'00" West, along the centerline of Inglewood Avenue, a distance of 485.00 feet; thence North 89°59'00" West a distance of 42.00 feet, to the **True Point of Beginning**;

Thence South 00°01'00" East along the westerly line of Inglewood Avenue as shown on the Town of Hawthorne Tract as filed in Book 15, Page 110 & 111 of Maps, in the Office of the County Recorder of Los Angeles County, a distance of 423.00 feet, thence South 44°59'00" West a distance of 16.97 feet; thence North 00°01'00" West a distance of 222.00 feet; thence North 03°12'30" East a distance of 213.34 feet to the **True Point of Beginning**.

Consisting of 3,869.64 square feet or 0.088 acres as shown on Exhibit "B", attached and by reference made a part hereof.

APN: 4142-012-908



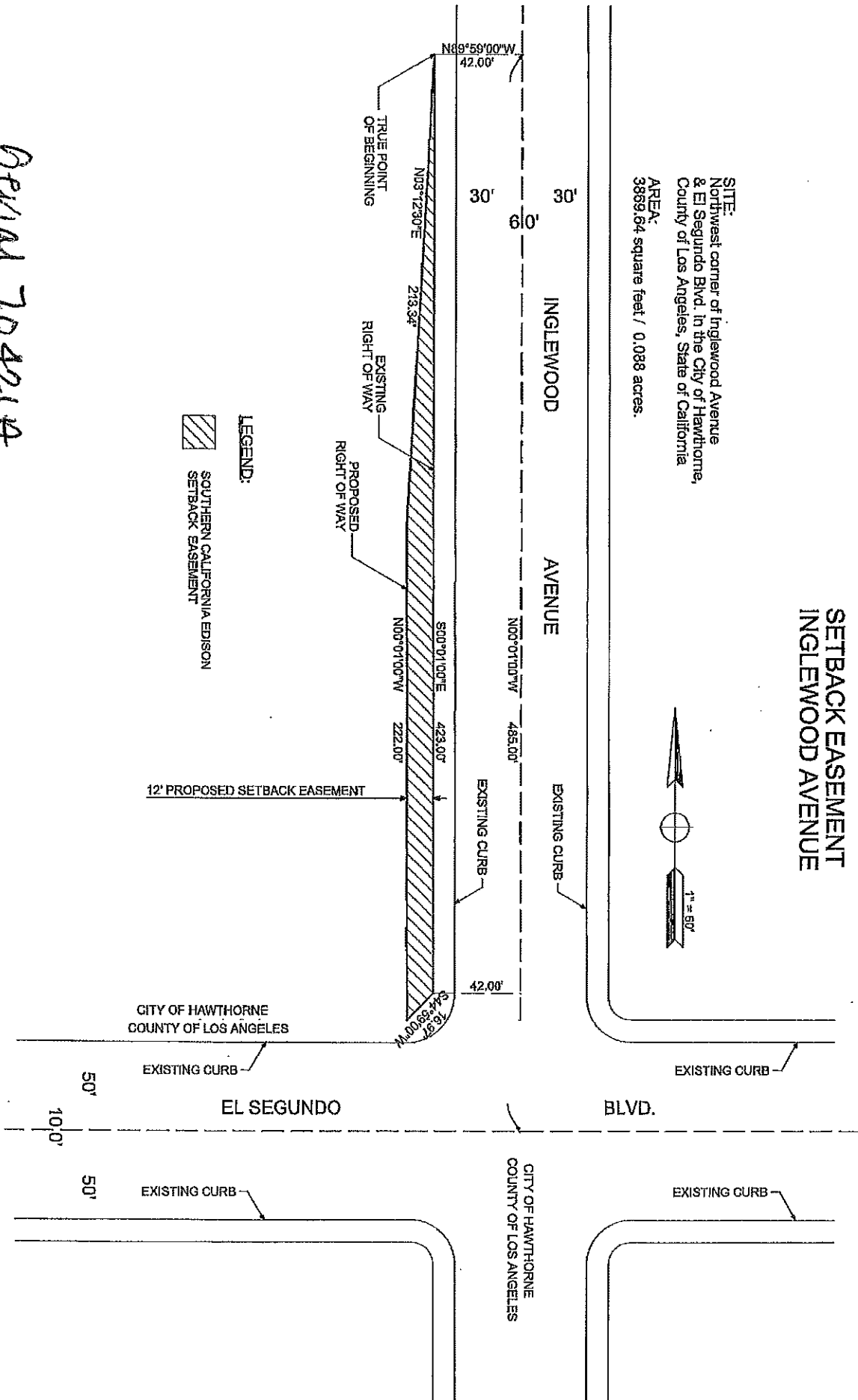
Serial 70421A

EXHIBIT "B"

SETBACK EASEMENT INGLEWOOD AVENUE

SITE:
Northwest corner of Inglewood Avenue
& El Segundo Blvd. in the City of Hawthorne,
County of Los Angeles, State of California

AREA:
3889.64 square feet / 0.088 acres.



Beval 70421A