

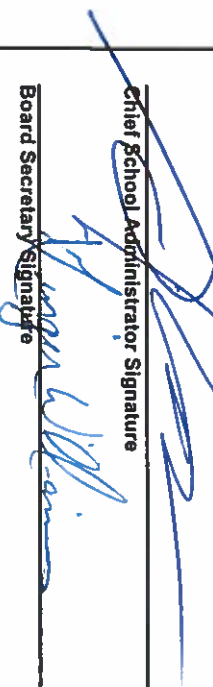
Annual Financial Report Accuracy Certification Statement

For Fiscal Year Ending
6/30/2017

Pennsylvania Department of Education
&
Office of Comptroller Operations
PDE-2056: Intermediate Unit
PDE-2057: School District, AVTS/CTC, Charter School,
and Special Program Jointure

CERTIFICATION: By signing this page I agree that the electronic data submitted is a complete and accurate statement of the financial operations and status of the local education agency for the fiscal year. It has been prepared in accordance with generally accepted accounting principles and established Commonwealth of PA reporting guidelines.

Chief School Administrator Signature



Date

10/31/17

Board Secretary Signature

Date

10/31/17

Ginger Williams

(814)781-2111 Ext :

Contact Person

Contact Person Telephone Number

gwilliams@smasd.org

(814)781-2190

Contact Person E-mail Address

Contact Person Fax Number

Audit Certification

Annual Financial Report:

For Fiscal Year Ending 6/30/2017

(Pursuant to PA School Code Section 218(b))

LEA Name : Saint Marys Area SD

AUN Number : 109248003

County : Elk

Audit Certification Due:
12/31/2017

This certification is applicable to the Annual Financial Report data submitted through the Consolidated Financial Reporting System on: 10/31/17

Date

Auditing Firm: *Geci and Associates PC*
301 Bruxelles St.
St. Marys, PA 15857

Auditor Contact Name:

Chris Gismondi

Auditor Phone:

814-834-1995

Auditor E-mail:

cgismondi@geciandassociates.net

CERTIFICATION: By signing this page I agree that the financial statements of the school have been properly audited as noted above pursuant to Article XXIV, and in the auditor's professional opinion, the Annual Financial Report (PDE-2057) submitted on the date referenced is materially consistent with the audited financial statements.

Chief School Administrator

Signature



Date

12-11-17

Board Secretary

Signature



Date

12-11-17

Ginger Williams

Contact Person

(814)781-2111

Ext :

Contact Person Telephone Number

gwilliams@smasd.org

Contact Person E-mail Address

(814)781-2190

Contact Person Fax Number

ST. MARYS AREA SCHOOL DISTRICT

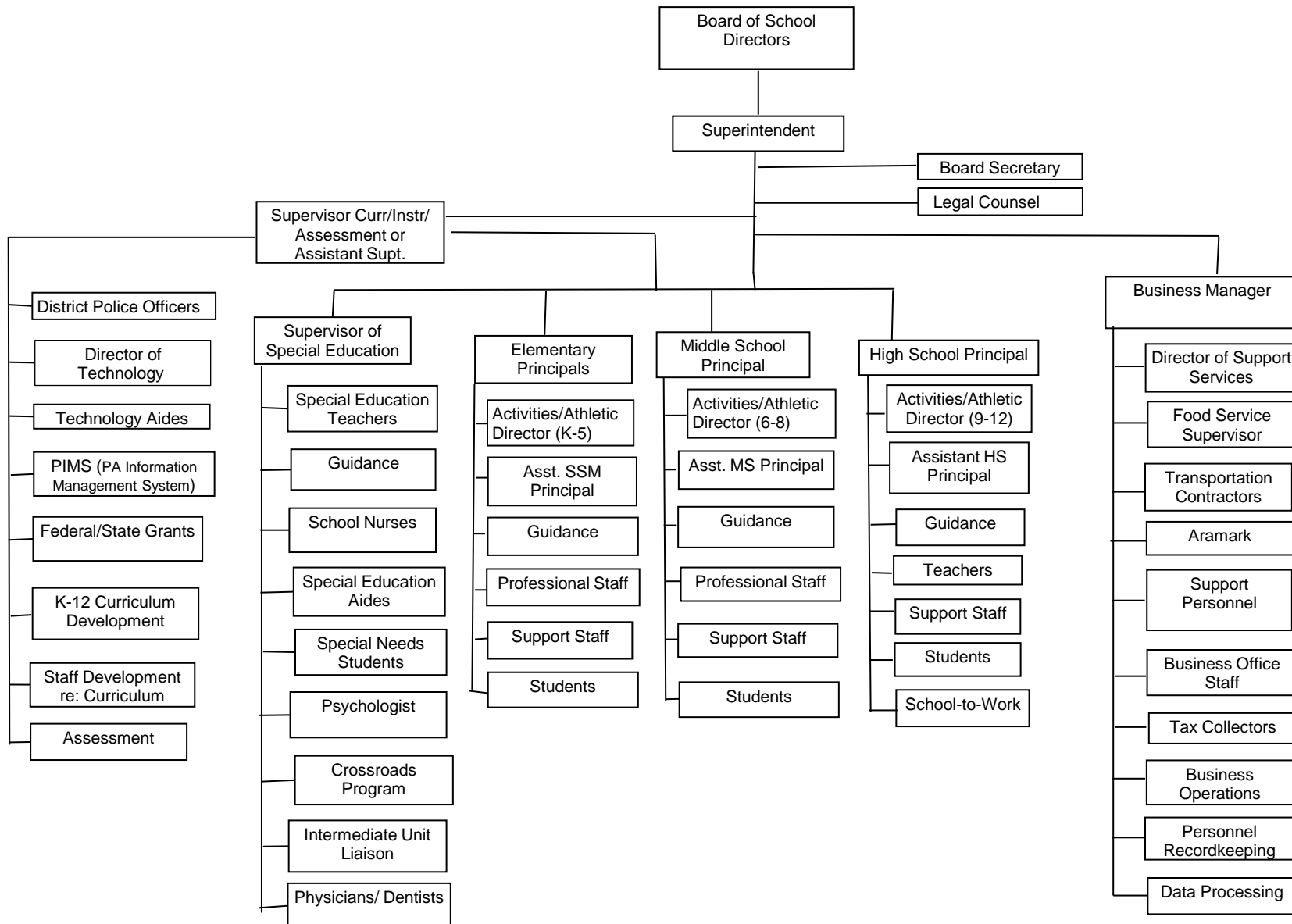
No. 008

SECTION: LOCAL BOARD PROCEDURES

TITLE: ORGANIZATION CHART

ADOPTED: November 8, 2010

REVISED: January 9, 2017



<u>Val Number</u>	<u>Description</u>	<u>Justification</u>
41480	Expenditure Detail, Salaries (Object 100) and Benefits (Object 200 series): Amounts must be entered for both Salaries and Benefits. Function 2190, Object 100: \$0.00 Function 2190, Object 200: \$22,897.44	Food service employees were outsourced to a management company. This is the unemployment compensation associated with these employees.
41670	Expenditure Detail, Salaries (Object 100) and Benefits (Object 200 series): Amounts must be entered for both Salaries and Benefits. Function 2900, Object 100: \$0.00 Function 2900, Object 200: \$28,790.23	This is health cost associated with funds used for retired employees.
50430	SESS - 2160 Social Work Services: SESS Schedule amounts for Special Education vary from prior year by 40% or more. Correct the data or enter a justification. SESS Schedule 2160: \$25,022.25 Prior Year SESS Schedule 2160: \$0.00	Contracted licensed social workers during the 2016-17 for the first time.
50450	SESS - 2350 Legal and Accounting Services: SESS Schedule amounts for Special Education vary from prior year by 40% or more. Correct the data or enter a justification. SESS Schedule 2350: \$15,699.79 Prior Year SESS Schedule 2350: \$0.00	Legal services were required during 2016-17 for special education but not needed in 2015-16

Amounts Expressed in Whole Dollars

<u>General Fund</u>	<u>Public Purpose Trust</u>	<u>Other Compt Approved</u>	<u>Athletic / Activity</u>	<u>Capital Reserve (690.</u>
<u>(10)</u>	<u>(27)</u>	<u>(28)</u>	<u>(29)</u>	<u>1850)</u>
				<u>(31)</u>

Assets And Deferred Outflows Of Resources

Assets

0100 Cash and Cash Equivalents	12,972,609
0110 Investments	
0120 Taxes Receivable	572,430
0130 Due From Other Funds	
0141 Due From Other Governments	1,411,830
0142 State Revenue Receivable	
0143 Federal Revenue Receivable	
0145 Other Intergovernmental Revenue Receivable	
0146 Due from Primary Government	
0147 Due from Component Unit	
0150 Other Receivables	2,971
0170 Inventories	
0180 Prepaid Expenses (Expenditures)	66,388
0190 Other Current Assets	73,537

Total Assets **\$15,099,765**

0910 Deferred Outflows of Resources

Total Assets And Deferred Outflows Of Resources **\$15,099,765**

Amounts Expressed in Whole Dollars

	<u>Capital Reserve (1431)</u> <u>(32)</u>	<u>Other Capital Projects</u> <u>Fund</u> <u>(39)</u>	<u>Debt Service</u> <u>(40)</u>	<u>Permanent</u> <u>(90)</u>	<u>Total Governmental</u> <u>Funds</u>
Assets And Deferred Outflows Of Resources					
Assets					
0100 Cash and Cash Equivalents	5,429,133	1,168,698			19,570,440
0110 Investments		508,059			508,059
0120 Taxes Receivable					572,430
0130 Due From Other Funds					
0141 Due From Other Governments					1,411,830
0142 State Revenue Receivable					
0143 Federal Revenue Receivable					
0145 Other Intergovernmental Revenue Receivable					
0146 Due from Primary Government					
0147 Due from Component Unit					
0150 Other Receivables					2,971
0170 Inventories					
0180 Prepaid Expenses (Expenditures)					66,388
0190 Other Current Assets					73,537
Total Assets	\$5,429,133	\$1,676,757			\$22,205,655
0910 Deferred Outflows of Resources					
Total Assets And Deferred Outflows Of Resources	\$5,429,133	\$1,676,757			\$22,205,655

Amounts Expressed in Whole Dollars

<u>General Fund</u>	<u>Public Purpose Trust</u>	<u>Other Compt Approved</u>	<u>Athletic / Activity</u>	<u>Capital Reserve (690.</u>
<u>(10)</u>	<u>(27)</u>	<u>(28)</u>	<u>(29)</u>	<u>1850)</u>
				<u>(31)</u>

Liabilities And Deferred Inflows Of Resources And Fund Balances

Liabilities

0400 Due to Other Funds	
0411 Due to Other Governments	
0412 Due to Primary Government	
0413 Due to Component Unit	
0420 Accounts Payable	1,259,805
0430 Contracts Payable	
0440 Current Portion of Long-Term Debt	
0450 Short-Term Payables	
0461 Accrued Salaries and Benefits	2,179,553
0462 Payroll Deductions and Withholding	106,522
0480 Unearned Revenues	13,682
0490 Other Current Liabilities	19,265

Total Liabilities **\$3,578,827**

0950 Deferred Inflows of Resources	572,430
------------------------------------	---------

Fund Balances

0810 Nonspendable Fund Balance	
0820 Restricted Fund Balance	
0830 Committed Fund Balance	9,028,508
0840 Assigned Fund Balance	
0850 Unassigned Fund Balance	1,920,000

Total Fund Balances **\$10,948,508**

Total Liabilities, Deferred Inflows Of Resources And Fund Balances **\$15,099,765**

Amounts Expressed in Whole Dollars	<u>Capital Reserve (1431)</u> <u>(32)</u>	<u>Other Capital Projects</u> <u>Fund</u> <u>(39)</u>	<u>Debt Service</u> <u>(40)</u>	<u>Permanent</u> <u>(90)</u>	<u>Total Governmental</u> <u>Funds</u>
Liabilities And Deferred Inflows Of Resources And Fund Balances					
Liabilities					
0400 Due to Other Funds					
0411 Due to Other Governments					
0412 Due to Primary Government					
0413 Due to Component Unit					
0420 Accounts Payable		60,443			1,320,248
0430 Contracts Payable					
0440 Current Portion of Long-Term Debt					
0450 Short-Term Payables					
0461 Accrued Salaries and Benefits					2,179,553
0462 Payroll Deductions and Withholding					106,522
0480 Unearned Revenues					13,682
0490 Other Current Liabilities					19,265
Total Liabilities		\$60,443			\$3,639,270
0950 Deferred Inflows of Resources					572,430
Fund Balances					
0810 Nonspendable Fund Balance					
0820 Restricted Fund Balance					
0830 Committed Fund Balance	5,429,133	1,616,314			16,073,955
0840 Assigned Fund Balance					
0850 Unassigned Fund Balance					1,920,000
Total Fund Balances	\$5,429,133	\$1,616,314			\$17,993,955
Total Liabilities, Deferred Inflows Of Resources And Fund Balances	\$5,429,133	\$1,676,757			\$22,205,655

Amounts Expressed in Whole Dollars	<u>General Fund</u> <u>(10)</u>	<u>Public Purpose Trust</u> <u>(27)</u>	<u>Other Compt Approved</u> <u>(28)</u>	<u>Athletic / Activity</u> <u>(29)</u>	<u>Capital Reserve (690.</u> <u>1850)</u> <u>(31)</u>
Revenues					
6000 Revenue from Local Sources	14,780,803				
7000 Revenue from State Sources	11,787,537				
8000 Revenue from Federal Sources	534,230				
Total Revenues	\$27,102,570				
Expenditures					
1000 Instruction	15,603,199				
2000 Support Services	9,574,859				
3000 Operation of Non-Instructional Services	642,278				
4000 Facilities Acquisition, Construction and Improvement Services					
5110 Debt Service	1,613,761				
5130 Refund of Prior Year Revenues / Receipts					
Total Expenditures	\$27,434,097				
Excess (Deficiency) Of Revenues Over Expenditures	(\$331,527)				
Other Financing Sources (Uses)					
9110 Face Value of Bonds Issued					
9120 Proceeds from Refunding of Bonds					
9130 Bond Premiums					
9200 Proceeds from Extended-Term Financing					
9300 Interfund Transfers - IN					
9400 Sale of or Compensation for Loss of Fixed Assets					
9710 Transfers from Component Units					
9720 Transfers from Primary Governments					
9910 Other Financing Sources Not Listed in the 9000 Series					
9990 Insurance Recoveries					
5120 Debt Service – Refunded Bonds					
5150 Bond Discounts					
5200 Interfund Transfers – Out					
5300 Transfers Out to Component Units/Primary Governments					
Total Other Financing Sources (Uses)					

Amounts Expressed in Whole Dollars	<u>Capital Reserve (1431)</u> <u>(32)</u>	<u>Other Capital Projects</u> <u>Fund</u> <u>(39)</u>	<u>Debt Service</u> <u>(40)</u>	<u>Permanent</u> <u>(90)</u>	<u>Total Governmental</u> <u>Funds</u>
Revenues					
6000 Revenue from Local Sources	13,538	12,360			14,806,701
7000 Revenue from State Sources					11,787,537
8000 Revenue from Federal Sources					534,230
Total Revenues	\$13,538	\$12,360			\$27,128,468
Expenditures					
1000 Instruction					15,603,199
2000 Support Services		12			9,574,871
3000 Operation of Non-Instructional Services					642,278
4000 Facilities Acquisition, Construction and Improvement Services		1,879,201			1,879,201
5110 Debt Service					1,613,761
5130 Refund of Prior Year Revenues / Receipts					
Total Expenditures		\$1,879,213			\$29,313,310
Excess (Deficiency) Of Revenues Over Expenditures	\$13,538	(\$1,866,853)			(\$2,184,842)
Other Financing Sources (Uses)					
9110 Face Value of Bonds Issued					
9120 Proceeds from Refunding of Bonds					
9130 Bond Premiums					
9200 Proceeds from Extended-Term Financing					
9300 Interfund Transfers - IN					
9400 Sale of or Compensation for Loss of Fixed Assets					
9710 Transfers from Component Units					
9720 Transfers from Primary Governments					
9910 Other Financing Sources Not Listed in the 9000 Series					
9990 Insurance Recoveries					
5120 Debt Service – Refunded Bonds					
5150 Bond Discounts					
5200 Interfund Transfers – Out					
5300 Transfers Out to Component Units/Primary Governments					
Total Other Financing Sources (Uses)					

Amounts Expressed in Whole Dollars	<u>General Fund</u> <u>(10)</u>	<u>Public Purpose Trust</u> <u>(27)</u>	<u>Other Compt Approved</u> <u>(28)</u>	<u>Athletic / Activity</u> <u>(29)</u>	<u>Capital Reserve</u> <u>(690.</u> <u>1850)</u> <u>(31)</u>
Special And Extraordinary Items					
9920 Special Items – Gains					
9930 Extraordinary Items – Gains					
5520 Special Items – Losses					
5530 Extraordinary Items – Losses					
Net Change In Fund Balances	(\$331,527)				
Fund Balance					
0001 Fund Balance - Beginning of Fiscal Year	11,280,035				
Fund Balance - End Of Year	\$10,948,508				

Amounts Expressed in Whole Dollars	<u>Capital Reserve (1431)</u> <u>(32)</u>	<u>Other Capital Projects</u> <u>Fund</u> <u>(39)</u>	<u>Debt Service</u> <u>(40)</u>	<u>Permanent</u> <u>(90)</u>	<u>Total Governmental</u> <u>Funds</u>
Special And Extraordinary Items					
9920 Special Items – Gains					
9930 Extraordinary Items – Gains					
5520 Special Items – Losses					
5530 Extraordinary Items – Losses					
Net Change In Fund Balances	\$13,538	(\$1,866,853)			(\$2,184,842)
Fund Balance					
0001 Fund Balance - Beginning of Fiscal Year	5,415,595	3,483,167			20,178,797
Fund Balance - End Of Year	\$5,429,133	\$1,616,314			\$17,993,955

Amounts Expressed in Whole Dollars	<u>Food Service</u> (51)	<u>Child Care</u> <u>Operations</u> (52)	<u>Other Enterprise</u> (58)	<u>TOTAL</u>	<u>Internal Service</u> (60)
Assets And Deferred Outflows Of Resources					
Current Assets					
0100 Cash and Cash Equivalents	176,442			176,442	
0110 Investments					
0130 Due From Other Funds					
0141 Due From Other Governments					
0142 State Revenue Receivable	4,277			4,277	
0143 Federal Revenue Receivable	57,603			57,603	
0146 Due from Primary Government					
0147 Due from Component Unit					
0150 Other Receivables	19,507			19,507	
0170 Inventories	38,783			38,783	
0180 Prepaid Expenses (Expenditures)	2,883			2,883	
0190 Other Current Assets					
Total Current Assets	\$299,495			\$299,495	
Noncurrent Assets					
0211 Land					
0212 Site Improvements (Net)					
0220 Buildings and Building Improvements (Net)					
0230 Machinery, Equipment and Furniture (Net)	41,935			41,935	
0250 Construction in Progress					
0260 Long Term Prepayments					
0290 Other Noncurrent Assets					
Total Noncurrent Assets	\$41,935			\$41,935	
0910 Deferred Outflows of Resources					
Total Assets And Deferred Outflows Of Resources	\$341,430			\$341,430	

Amounts Expressed in Whole Dollars	<u>Food Service</u> <u>(51)</u>	<u>Child Care</u> <u>Operations</u> <u>(52)</u>	<u>Other Enterprise</u> <u>(58)</u>	<u>TOTAL</u>	<u>Internal Service</u> <u>(60)</u>
Liabilities And Deferred Inflows Of Resources And Net Position					
Current Liabilities					
0400 Due to Other Funds					
0411 Due to Other Governments	6,474			6,474	
0413 Due to Component Unit					
0420 Accounts Payable	18,834			18,834	
0430 Contracts Payable					
0440 Current Portion of Long-Term Debt					
0450 Short-Term Payables					
0461 Accrued Salaries and Benefits					
0462 Payroll Deductions and Withholding					
0480 Unearned Revenues	42,919			42,919	
0490 Other Current Liabilities					
Total Current Liabilities	\$68,227			\$68,227	
Noncurrent Liabilities					
0510 Bonds Payable					
0520 Extended-Term Financing Agreements Payable					
0530 Lease-Purchase Obligations					
0540 Accumulated Compensated Absences					
0550 Authority Lease Obligations					
0560 Other Post-Employment Benefits (OPEB)					
0570 Net Pension Liability					
0599 Other Noncurrent Liabilities					
Total Noncurrent Liabilities					
Total Liabilities	\$68,227			\$68,227	
0950 Deferred Inflows of Resources					
Net Position					
0791 Net Investment in Capital Assets	41,935			41,935	
0008 Restricted Net Position (0792 – 0798)					
0799 Unrestricted Net Position	231,268			231,268	
Total Net Position	\$273,203			\$273,203	
Total Liabilities And Deferred Inflows Of Resources And Net Position	\$341,430			\$341,430	

Amounts Expressed in Whole Dollars	<u>Food Service</u> <u>(51)</u>	<u>Child Care Operations</u> <u>(52)</u>	<u>Other Enterprise</u> <u>(58)</u>	<u>TOTAL</u>	<u>Internal Service</u> <u>(60)</u>
Operating Revenues					
6600 Food Service Revenue	509,467			509,467	
0071 Charges for Services					
0072 Other Operating Revenue					
Total Operating Revenues	\$509,467			\$509,467	
Operating Expenses					
100 Personnel Services – Salaries					
200 Personnel Services – Employee Benefits					
300 Purchased Professional and Technical Services	1,559			1,559	
400 Purchased Property Services	10,350			10,350	
500 Other Purchased Services	854,702			854,702	
600 Supplies	86,303			86,303	
740 Depreciation	7,973			7,973	
810 Dues and Fees	146			146	
890 Miscellaneous Expenditures					
Total Operating Expenses	\$961,033			\$961,033	
Operating Income (Loss)	(\$451,566)			(\$451,566)	
Non Operating Revenues (Expenses)					
6500 Earnings on Investments	43			43	
6920 Contributions and Donations from Private Sources					
6930 Gains or Losses on Sale of Fixed Assets					
6991 Refunds of a Prior Year Expenditure					
7000 Revenue from State Sources	34,794			34,794	
8000 Revenue from Federal Sources	532,177			532,177	
820 Claims and Judgments Against the LEA					
830 Interest					
TOTAL Non Operating Revenues (Expenses)	\$567,014			\$567,014	
Income (Loss) Before Contributions And Transfers	\$115,448			\$115,448	

Amounts Expressed in Whole Dollars	<u>Food Service</u> <u>(51)</u>	<u>Child Care Operations</u> <u>(52)</u>	<u>Other Enterprise</u> <u>(58)</u>	<u>TOTAL</u>	<u>Internal Service</u> <u>(60)</u>
Contributions, Transfers, and Special and Extraordinary Items					
5200 Interfund Transfers – Out					
5300 Transfers Out to Component Units/Primary Governments					
5520 Special Items – Losses					
5530 Extraordinary Items – Losses					
9300 Interfund Transfers - IN					
9500 Capital Contributions					
9700 Transfers IN From Component Units/Primary Governments					
9920 Special Items – Gains					
9930 Extraordinary Items – Gains					
Change In Net Position	\$115,448			\$115,448	
0002 Net Position - Beginning of Fiscal Year	157,755			157,755	
0003 Accounting Changes / Residual Equity Transfers					
Net Position - End Of Year	\$273,203			\$273,203	

Amounts Expressed in Whole Dollars	<u>Food Service</u> <u>(51)</u>	<u>Child Care Operations</u> <u>(52)</u>	<u>Other Enterprise</u> <u>(58)</u>	<u>TOTAL</u>	<u>Internal Service(60)</u>
Cash Flows From Operating Activities					
0011 Cash Receipts From Users	449,144			449,144	
0012 Cash Receipts From Assessments Made to Other Funds					
0013 Cash Receipts From Earnings on Investments					
0014 Cash Receipts From Other Operating Revenue					
0015 Cash Payments To Employees For Services					
0016 Cash Payments For Insurance Claims					
0017 Cash Payments To Suppliers For Goods and Services	14,501			14,501	
0018 Cash Payments For Other Operating Expenses	874,069			874,069	
Net Cash Provided By (Used For) Operating Activities	(\$439,426)			(\$439,426)	
Cash Flows From Non-Capital Financing Activities					
0021 Receipts From Local Sources - 6000					
0022 Receipts From State Sources - 7000	34,794			34,794	
0023 Receipts From Federal Sources -8000	454,872			454,872	
0024 Notes and Loans Received (Repaid)					
0025 Interest Paid on Notes/Loans - 5100-830					
0026 Operating Transfers In (Out)/Residual Equity Trans					
0027 Operating Transfers In (Out) Primary Government / Comp Unit					
0028 Receipts From Refund of Prior Year Expenditures - 6991					
0029 Special and Extraordinary Gains (losses)					
Net Cash Prov By (Used for) Non-Capital Financing Activities	\$489,666			\$489,666	
Cash Flows From Capital and Related Financing Activities					
0031 Payments For Fac Acq, Const, and Imp - 4000	(17,747)			(17,747)	
0032 Gain / (Loss) on Sale of Fixed Assets - 6930					
0033 Proceeds From Extended Term Financing - 9200					
0034 Principal Paid on Financing Agreements					
0035 Interest Paid on Financing Agreements - 5100-830					
0036 (Inc) Dec in Contributed Capital					
Net Cash Prov By (Used for) Capital and Related Financing Activities	(\$17,747)			(\$17,747)	
Cash Flows From Investing Activities					
0041 Earnings on Investments - 6500	43			43	
0042 Purchase of Inv Securities / Deposits to Inv Pools					
0043 Receipts From Investment Pool Withdrawals					
0044 Proceeds from Sale and Maturity of Inv Securities					
0045 Loans Received (Paid)					
Net Cash Prov By (Used for) Investing Activities	\$43			\$43	

	<u>Food Service</u> <u>(51)</u>	<u>Child Care Operations</u> <u>(52)</u>	<u>Other Enterprise</u> <u>(58)</u>	<u>TOTAL</u>	<u>Internal Service</u> <u>(60)</u>
Net Increase (Decrease) in Cash Flows	32,536			32,536	
0004 Cash and Cash Equivalents Beginning of Year	143,906			143,906	
Cash and Cash Equivalents at Year End	\$176,442			\$176,442	
<hr/>					
Reconciliation of Operating Income (Loss) To Net Cash Provided by (Used For) Operating Activities					
0005 Operating Income (Loss) per REP	(451,566)			(451,566)	
Adjustments					
0051 Depreciation and Net Amortization	7,973			7,973	
0052 Provision for Uncollectible Accounts					
0053 Other Adjustments	77,305			77,305	
Effect of Changes in Assets, Liabilities, Deferred Outflows and Deferred Inflows					
0054 (Inc) Dec In Accounts Receivable (0120-0150)	(78,945)			(78,945)	
0055 Advances to Other Funds (0160)					
0056 (Inc) Dec in Inventories (0170)	(14,501)			(14,501)	
0057 (Inc) Dec in Prepaid Expenses (0180)	(2,883)			(2,883)	
0058 (Inc) Dec in Other Current or Noncurrent Assets					
0064 Deferred Outflows (0910)					
0059 Inc (Dec) in Accounts Payable (0400-0450)	8,602			8,602	
0060 Inc (Dec) in Accrued Salaries/Benefits (0461)					
0065 Inc (Dec) in Net Pension Liabilities (0570)					
0066 Inc (Dec) in Other Postemp Benefit Oblig (0560)					
0061 Inc (Dec) in Payroll Deductions/Withholding (0462)					
0062 Inc (Dec) in Unearned Revenue (0480)	14,589			14,589	
0063 Inc (Dec) in Other Current or Noncurrent Liabilities					
0067 Deferred Inflows (0950)					
Total Adjustments	\$12,140			\$12,140	
Cash Provided By (Used for) Total	(\$439,426)			(\$439,426)	

COMBINED STATEMENT OF CASH FLOWS
SCHEDULE OF NONCASH INVESTING, CAPITAL, AND FINANCING ACTIVITIES

Explanation of Transaction and Balance Sheet Effect	Amount
Total	

LEA : 109248003 Saint Marys Area SD

Printed 12/14/2017 10:49:54 AM

Amounts Expressed in Whole Dollars	<u>Private Purpose Trust</u> <u>(71)</u>	<u>Investment Trust</u> <u>(72)</u>	<u>Pension Trust</u> <u>(73)</u>	<u>Activity</u> <u>(81)</u>
Assets And Deferred Outflows Of Resources				
Assets				
0100 Cash and Cash Equivalents		2,417		102,559
0110 Investments		4,291		
0130 Due From Other Funds				
0147 Due from Component Unit				
0150 Other Receivables				
0170 Inventories				
0180 Prepaid Expenses (Expenditures)				
0190 Other Current Assets				
0220 Buildings and Building Improvements (Net)				
0230 Machinery, Equipment and Furniture (Net)				
Total Assets		\$6,708		\$102,559
0910 Deferred Outflows of Resources				
Total Assets And Deferred Outflows Of Resources		\$6,708		\$102,559

LEA : 109248003 Saint Marys Area SD

Printed 12/14/2017 10:49:54 AM

Amounts Expressed in Whole Dollars	<u>Other Agency</u> <u>(89)</u>	<u>Discrete Component Units</u> <u>(98)</u>	<u>Discrete Component Units</u> <u>(99)</u>	<u>Total Fiduciary Funds</u>
Assets And Deferred Outflows Of Resources				
Assets				
0100 Cash and Cash Equivalents				104,976
0110 Investments				4,291
0130 Due From Other Funds				
0147 Due from Component Unit				
0150 Other Receivables				
0170 Inventories				
0180 Prepaid Expenses (Expenditures)				
0190 Other Current Assets				
0220 Buildings and Building Improvements (Net)				
0230 Machinery, Equipment and Furniture (Net)				
Total Assets				\$109,267
0910 Deferred Outflows of Resources				
Total Assets And Deferred Outflows Of Resources				\$109,267

LEA : 109248003 Saint Marys Area SD

Printed 12/14/2017 10:49:54 AM

Amounts Expressed in Whole Dollars	<u>Private Purpose Trust</u> (71)	<u>Investment Trust</u> (72)	<u>Pension Trust</u> (73)	<u>Activity</u> (81)
Liabilities, Deferred Inflows Of Resources And Net Position				
Liabilities				
0400 Due to Other Funds				
0411 Due to Other Governments				
0412 Due to Primary Government				
0413 Due to Component Unit				
0420 Accounts Payable				50
0430 Contracts Payable				
0450 Short-Term Payables				
0461 Accrued Salaries and Benefits				
0462 Payroll Deductions and Withholding				
0480 Unearned Revenues				
0490 Other Current Liabilities				102,509
Total Liabilities				\$102,559
0950 Deferred Inflows of Resources				
Net Position				
0791 Net Investment in Capital Assets				
0009 Restricted Net Position (0792 – 0798)	6,708			
0799 Unrestricted Net Position				
Total Net Position	\$6,708			
Total Liabilities, Deferred Inflows Of Resources And Net Position	\$6,708			\$102,559

LEA : 109248003 Saint Marys Area SD

Printed 12/14/2017 10:49:54 AM

Amounts Expressed in Whole Dollars	<u>Other Agency</u> (89)	<u>Discrete Component Units</u> (98)	<u>Discrete Component Units</u> (99)	<u>Total Fiduciary Funds</u>
Liabilities, Deferred Inflows Of Resources And Net Position				
Liabilities				
0400 Due to Other Funds				
0411 Due to Other Governments				
0412 Due to Primary Government				
0413 Due to Component Unit				
0420 Accounts Payable				50
0430 Contracts Payable				
0450 Short-Term Payables				
0461 Accrued Salaries and Benefits				
0462 Payroll Deductions and Withholding				
0480 Unearned Revenues				
0490 Other Current Liabilities				102,509
Total Liabilities				\$102,559
0950 Deferred Inflows of Resources				
Net Position				
0791 Net Investment in Capital Assets				
0009 Restricted Net Position (0792 – 0798)				6,708
0799 Unrestricted Net Position				
Total Net Position				\$6,708
Total Liabilities, Deferred Inflows Of Resources And Net Position				\$109,267

Amounts Expressed in Whole Dollars	<u>Private Purpose Trust</u> (71)	<u>Investment Trust</u> (72)	<u>Pension Trust</u> (73)	<u>Discrete Component</u> <u>Units</u> (98)	<u>Discrete Component</u> <u>Units</u> (99)	<u>Total Fiduciary</u> <u>Funds</u>
Additions						
0091 Gifts and Contributions	213					213
0092 Other Additions						
Deductions						
0093 Scholarships Awarded	489					489
0094 Other Deductions	39,669					39,669
Change In Net Position	(\$39,945)					(\$39,945)
0006 Net Position – Beginning of Fiscal Year	46,653					46,653
0007 Net Position Held in Trust for Pension Benefits						
Net Position - End of Fiscal Year	\$6,708					\$6,708

	<u>Revenue Reported In Current Year</u>	<u>Current Year Tax Accrual</u>	<u>Prior Year Tax Accrual</u>	<u>Taxes Collected In Current Year</u>
<u>Revenue from Local Sources</u>				
6111 Current Real Estate Taxes	9,602,567.69			9,602,567.69
6112 Interim Real Estate Taxes	6,084.31			6,084.31
6113 Public Utility Realty Taxes	15,813.04			15,813.04
6114 Payments in Lieu of Current Taxes - State / Local	106,289.62			106,289.62
6120 Current Per Capita Taxes, Section 679	30,530.00			30,530.00
6141 Current Act 511 Per Capita Taxes	30,530.00			30,530.00
6143 Current Act 511 Local Services Taxes	59,020.64			59,020.64
6151 Current Act 511 Earned Income Taxes	2,094,600.08			2,094,600.08
6152 Current Act 511 Occupation Taxes	1,167,497.90			1,167,497.90
6153 Current Act 511 Real Estate Transfer Taxes	186,809.63			186,809.63
6411 Delinquent Real Estate Taxes	604,076.83			604,076.83
6452 Delinquent Act 511 Occupation Taxes	319,639.91			319,639.91
6500 Earnings on Investments	42,404.42			
6700 Revenues from LEA Activities	50,074.03			
6832 Federal IDEA Revenue Received as Pass Through	362,219.43			
6910 Rentals	8,787.30			
6920 Contributions and Donations from Private Sources	64,783.22			
6942 Summer School Tuition	1,300.00			
6949 Other Tuition from Patrons	920.00			
6980 Revenue from Community Services Activities	24,255.00			
6999 Other Revenues Not Specified Above	2,599.73			
TOTAL Revenue from Local Sources	\$14,780,802.78			\$14,223,459.65

**Revenue Reported
In Current Year**

Revenue from State Sources

7110 Basic Education Funding	6,536,144.69		
7220 Vocational Education	37,826.80		
7271 Special Education funds for School-Aged Pupils	1,259,866.92		
7311 Pupil Transportation Subsidy	822,530.59		
7312 Nonpublic and Charter School Pupil Transportation Subsidy	217,140.00		
7330 Health Services (Medical, Dental, Nurse, Act 25)	49,511.60		
7340 State Property Tax Reduction Allocation	348,291.23		
7360 Safe Schools	25,000.00		
7505 Ready to Learn Block Grant	306,366.00		
7509 Supplemental Equipment Grants	6,850.11		
7599 Other State Revenue Not Listed Elsewhere in the 7000 Series	3,000.00		
7810 State Share of Social Security and Medicare Taxes	423,480.43		
7820 State Share of Retirement Contributions	1,751,528.54		
TOTAL Revenue from State Sources	\$11,787,536.91		

**Revenue Reported
In Current Year**

Revenue from Federal Sources

8514 NCLB, Title I - Improving the Academic Achievement of the Disadvantaged	323,534.82		
8515 NCLB, Title II - Preparing, Training and Recruiting High Quality Teachers and Principals	93,518.00		
8521 Vocational Education - Operating Expenditures	26,855.00		
8810 School-Based Access Medicaid Reimbursement Program (SBAP) Reimbursements (Access)	83,321.11		
8820 Medical Assistance Reimbursement for Administrative Claiming (Quarterly) Program	7,001.13		
TOTAL Revenue from Federal Sources	\$534,230.06		
TOTAL FROM ALL SOURCES	\$27,102,569.75		\$14,223,459.65

Revenue from Local Sources	14,780,802.78
Revenue from State Sources	11,787,536.91
Revenue from Federal Sources	534,230.06
Other Financing Sources	
TOTAL FROM ALL SOURCES	\$27,102,569.75

General Fund (10)

	<u>Total</u>
1000 Instruction	
100 <u>Personnel Services – Salaries</u>	
100 Personnel Services – Salaries	8,514,206.26
Total Personnel Services – Salaries	\$8,514,206.26
200 <u>Personnel Services – Employee Benefits</u>	
210 Group Insurance – Contracted Provider	2,282,920.59
220 Social Security Contributions	642,170.51
230 PSERS Retirement Contributions	2,545,992.97
250 Unemployment Compensation	5,652.53
260 Workers’ Compensation	40,729.00
292 Health Savings Accounts	30,495.72
Total Personnel Services – Employee Benefits	\$5,547,961.32
300 <u>Purchased Professional and Technical Services</u>	
322 Professional Educational Services – Ius	37,509.00
323 Professional Educational Services – Other Educational Agencies	(102.37)
329 Professional Educational Services – Other	295,224.53
330 Other Professional Services	129,610.12
340 Technical Services	43,569.46
390 Other Purchased Professional and Technical Services	9,515.70
Total Purchased Professional and Technical Services	\$515,326.44
400 <u>Purchased Property Services</u>	
440 Rentals	47,938.70
Total Purchased Property Services	\$47,938.70
500 <u>Other Purchased Services</u>	
510 Student Transportation Services	5,515.13
520 Insurance – General	885.00
530 Communications	1,358.08
550 Printing and Binding	472.49
561 Tuition To Other School Districts Within the State	221,617.90
562 Tuition To Pennsylvania Charter Schools	256,147.70
567 Tuition To Approved Private Schools (APS) and PA Chartered Schools for the Deaf and Blind	137,393.94
580 Travel	13,998.52
Total Other Purchased Services	\$637,388.76
600 <u>Supplies</u>	
610 General Supplies	172,532.38
630 Food	4,153.66
640 Books and Periodicals	37,912.72
650 Supplies & Fees – Technology Related	82,550.10
Total Supplies	\$297,148.86
700 <u>Property</u>	
752 Capital Equipment – Original and Additional	37,091.00
Total Property	\$37,091.00

LEA : 109248003 Saint Marys Area SD

Printed 12/14/2017 10:49:57 AM

General Fund (10)

1000 Instruction	<u>Total</u>
800 <u>Other Objects</u>	
810 Dues and Fees	6,137.29
Total Other Objects	\$6,137.29
Total 1000 Instruction	\$15,603,198.63

General Fund (10)

1100 Regular Programs – Elementary / Secondary

	<u>Elementary</u>	<u>Secondary</u>	<u>Federal</u>	<u>Total</u>
100 Personnel Services – Salaries				
100 Personnel Services – Salaries	3,409,440.01	2,597,528.08	293,394.89	6,300,362.98
Total Personnel Services – Salaries	\$3,409,440.01	\$2,597,528.08	\$293,394.89	\$6,300,362.98
200 Personnel Services – Employee Benefits				
210 Group Insurance – Contracted Provider	901,687.30	686,603.70	25,841.93	1,614,132.93
220 Social Security Contributions	272,372.93	196,622.99	7,540.34	476,536.26
230 PSERS Retirement Contributions	1,083,777.99	778,485.18	29,756.27	1,892,019.44
250 Unemployment Compensation	2,804.61	2,847.92		5,652.53
260 Workers' Compensation	24,505.26	16,223.74		40,729.00
292 Health Savings Accounts	13,209.97	9,583.27		22,793.24
Total Personnel Services – Employee Benefits	\$2,298,358.06	\$1,690,366.80	\$63,138.54	\$4,051,863.40
300 Purchased Professional and Technical Services				
329 Professional Educational Services – Other	181,914.55	94,496.24	654.50	277,065.29
390 Other Purchased Professional and Technical Services	2,721.59	6,794.11		9,515.70
Total Purchased Professional and Technical Services	\$184,636.14	\$101,290.35	\$654.50	\$286,580.99
400 Purchased Property Services				
440 Rentals	29,441.25	16,973.21		46,414.46
Total Purchased Property Services	\$29,441.25	\$16,973.21		\$46,414.46
500 Other Purchased Services				
510 Student Transportation Services	4,607.87	520.28		5,128.15
550 Printing and Binding	240.31	232.18		472.49
561 Tuition To Other School Districts Within the State		35,682.45		35,682.45
562 Tuition To Pennsylvania Charter Schools		202,538.09		202,538.09
580 Travel	5,861.95	3,532.13	275.59	9,669.67
Total Other Purchased Services	\$10,710.13	\$242,505.13	\$275.59	\$253,490.85
600 Supplies				
610 General Supplies	68,234.90	45,811.28	3,659.13	117,705.31
630 Food	1,371.88	2,709.78		4,081.66
640 Books and Periodicals	20,398.06	14,901.64		35,299.70
650 Supplies & Fees – Technology Related	15,362.49	30,550.52	30,387.09	76,300.10
Total Supplies	\$105,367.33	\$93,973.22	\$34,046.22	\$233,386.77
800 Other Objects				
810 Dues and Fees	1,798.07	1,404.89		3,202.96
Total Other Objects	\$1,798.07	\$1,404.89		\$3,202.96
Total 1100 Regular Programs – Elementary / Secondary	\$6,039,750.99	\$4,744,041.68	\$391,509.74	\$11,175,302.41

LEA : 109248003 Saint Marys Area SD

Printed 12/14/2017 10:49:57 AM

Page - 4 of 25

General Fund (10)**1110 Regular Programs**

	<u>Elementary</u>	<u>Secondary</u>	<u>Federal</u>	<u>Total</u>
100 Personnel Services – Salaries				
100 Personnel Services – Salaries	3,409,440.01	2,597,528.08		6,006,968.09
Total Personnel Services – Salaries	\$3,409,440.01	\$2,597,528.08		\$6,006,968.09
200 Personnel Services – Employee Benefits				
210 Group Insurance – Contracted Provider	901,687.30	686,603.70		1,588,291.00
220 Social Security Contributions	272,372.93	196,622.99		468,995.92
230 PSERS Retirement Contributions	1,083,777.99	778,485.18		1,862,263.17
250 Unemployment Compensation	2,804.61	2,847.92		5,652.53
260 Workers' Compensation	24,505.26	16,223.74		40,729.00
292 Health Savings Accounts	13,209.97	9,583.27		22,793.24
Total Personnel Services – Employee Benefits	\$2,298,358.06	\$1,690,366.80		\$3,988,724.86
300 Purchased Professional and Technical Services				
329 Professional Educational Services – Other	181,914.55	94,496.24		276,410.79
390 Other Purchased Professional and Technical Services	2,721.59	6,794.11		9,515.70
Total Purchased Professional and Technical Services	\$184,636.14	\$101,290.35		\$285,926.49
400 Purchased Property Services				
440 Rentals	29,441.25	16,973.21		46,414.46
Total Purchased Property Services	\$29,441.25	\$16,973.21		\$46,414.46
500 Other Purchased Services				
510 Student Transportation Services	4,607.87	520.28		5,128.15
550 Printing and Binding	240.31	232.18		472.49
561 Tuition To Other School Districts Within the State		35,682.45		35,682.45
562 Tuition To Pennsylvania Charter Schools		202,538.09		202,538.09
580 Travel	5,861.95	3,532.13		9,394.08
Total Other Purchased Services	\$10,710.13	\$242,505.13		\$253,215.26
600 Supplies				
610 General Supplies	68,234.90	45,811.28		114,046.18
630 Food	1,371.88	2,709.78		4,081.66
640 Books and Periodicals	20,398.06	14,901.64		35,299.70
650 Supplies & Fees – Technology Related	15,362.49	30,550.52		45,913.01
Total Supplies	\$105,367.33	\$93,973.22		\$199,340.55
800 Other Objects				
810 Dues and Fees	1,798.07	1,404.89		3,202.96
Total Other Objects	\$1,798.07	\$1,404.89		\$3,202.96
Total 1110 Regular Programs	\$6,039,750.99	\$4,744,041.68		\$10,783,792.67

General Fund (10)

1190 Federally-Funded Regular Programs

	<u>Elementary</u>	<u>Secondary</u>	<u>Federal</u>	<u>Total</u>
100 Personnel Services – Salaries				
100 Personnel Services – Salaries			293,394.89	293,394.89
Total Personnel Services – Salaries			\$293,394.89	\$293,394.89
200 Personnel Services – Employee Benefits				
210 Group Insurance – Contracted Provider			25,841.93	25,841.93
220 Social Security Contributions			7,540.34	7,540.34
230 PSERS Retirement Contributions			29,756.27	29,756.27
Total Personnel Services – Employee Benefits			\$63,138.54	\$63,138.54
300 Purchased Professional and Technical Services				
329 Professional Educational Services – Other			654.50	654.50
Total Purchased Professional and Technical Services			\$654.50	\$654.50
500 Other Purchased Services				
580 Travel			275.59	275.59
Total Other Purchased Services			\$275.59	\$275.59
600 Supplies				
610 General Supplies			3,659.13	3,659.13
650 Supplies & Fees – Technology Related			30,387.09	30,387.09
Total Supplies			\$34,046.22	\$34,046.22
Total 1190 Federally-Funded Regular Programs			\$391,509.74	\$391,509.74

General Fund (10)

1200 Special Programs – Elementary / Secondary

	<u>Elementary</u>	<u>Secondary</u>	<u>Federal</u>	<u>Total</u>
100 Personnel Services – Salaries				
100 Personnel Services – Salaries	522,538.40	909,318.77	289,850.55	1,721,707.72
Total Personnel Services – Salaries	\$522,538.40	\$909,318.77	\$289,850.55	\$1,721,707.72
200 Personnel Services – Employee Benefits				
210 Group Insurance – Contracted Provider	231,172.22	324,016.61	6,451.55	561,640.38
220 Social Security Contributions	49,820.13	72,424.91	7,279.92	129,524.96
230 PSERS Retirement Contributions	195,548.00	288,062.79	28,913.98	512,524.77
292 Health Savings Accounts	2,599.99	3,748.33		6,348.32
Total Personnel Services – Employee Benefits	\$479,140.34	\$688,252.64	\$42,645.45	\$1,210,038.43
300 Purchased Professional and Technical Services				
322 Professional Educational Services – Ius	8,030.40	15,969.60	13,509.00	37,509.00
329 Professional Educational Services – Other	8,483.36	4,266.88		12,750.24
330 Other Professional Services	36,251.70	72,091.70		108,343.40
340 Technical Services	30,620.11	12,949.35		43,569.46
Total Purchased Professional and Technical Services	\$83,385.57	\$105,277.53	\$13,509.00	\$202,172.10
400 Purchased Property Services				
440 Rentals	510.01	1,014.23		1,524.24
Total Purchased Property Services	\$510.01	\$1,014.23		\$1,524.24
500 Other Purchased Services				
510 Student Transportation Services	116.93	270.05		386.98
530 Communications	454.41	903.67		1,358.08
561 Tuition To Other School Districts Within the State	53,402.83	118,868.49		172,271.32
562 Tuition To Pennsylvania Charter Schools	17,937.78	35,671.83		53,609.61
567 Tuition To Approved Private Schools (APS) and PA Chartered Schools for the Deaf and Blind	45,972.01	91,421.93		137,393.94
580 Travel	1,112.88	3,215.97		4,328.85
Total Other Purchased Services	\$118,996.84	\$250,351.94		\$369,348.78
600 Supplies				
610 General Supplies	10,472.11	10,909.71	4,335.00	25,716.82
640 Books and Periodicals	743.10	326.31		1,069.41
650 Supplies & Fees – Technology Related	2,091.25	4,158.75		6,250.00
Total Supplies	\$13,306.46	\$15,394.77	\$4,335.00	\$33,036.23
800 Other Objects				
810 Dues and Fees	475.00	420.00		895.00
Total Other Objects	\$475.00	\$420.00		\$895.00
Total 1200 Special Programs – Elementary / Secondary	\$1,218,352.62	\$1,970,029.88	\$350,340.00	\$3,538,722.50

General Fund (10)

1210 Life Skills Support

	<u>Elementary</u>	<u>Secondary</u>	<u>Federal</u>	<u>Total</u>
100 Personnel Services – Salaries				
100 Personnel Services – Salaries	107,150.70	173,771.17	58,433.48	339,355.35
Total Personnel Services – Salaries	\$107,150.70	\$173,771.17	\$58,433.48	\$339,355.35
200 Personnel Services – Employee Benefits				
210 Group Insurance – Contracted Provider	34,386.33	84,723.48	1,359.11	120,468.92
220 Social Security Contributions	9,099.93	14,808.87	1,441.84	25,350.64
230 PSERS Retirement Contributions	36,458.65	59,600.40	5,849.17	101,908.22
292 Health Savings Accounts	433.33	216.67		650.00
Total Personnel Services – Employee Benefits	\$80,378.24	\$159,349.42	\$8,650.12	\$248,377.78
300 Purchased Professional and Technical Services				
329 Professional Educational Services – Other	8,119.24	437.55		8,556.79
Total Purchased Professional and Technical Services	\$8,119.24	\$437.55		\$8,556.79
500 Other Purchased Services				
510 Student Transportation Services	116.93	270.05		386.98
580 Travel		48.75		48.75
Total Other Purchased Services	\$116.93	\$318.80		\$435.73
600 Supplies				
610 General Supplies	1,634.35	4,779.86		6,414.21
Total Supplies	\$1,634.35	\$4,779.86		\$6,414.21
Total 1210 Life Skills Support	\$197,399.46	\$338,656.80	\$67,083.60	\$603,139.86

General Fund (10)

1220 Sensory Support

	<u>Elementary</u>	<u>Secondary</u>	<u>Federal</u>	<u>Total</u>
100 Personnel Services – Salaries				
100 Personnel Services – Salaries	128,444.17	129,586.08		258,030.25
Total Personnel Services – Salaries	\$128,444.17	\$129,586.08		\$258,030.25
200 Personnel Services – Employee Benefits				
210 Group Insurance – Contracted Provider	51,645.91	38,026.31		89,672.22
220 Social Security Contributions	9,675.67	9,791.51		19,467.18
230 PSERS Retirement Contributions	38,571.85	38,914.73		77,486.58
292 Health Savings Accounts	433.33	866.66		1,299.99
Total Personnel Services – Employee Benefits	\$100,326.76	\$87,599.21		\$187,925.97
300 Purchased Professional and Technical Services				
322 Professional Educational Services – lus	8,030.40	15,969.60		24,000.00
340 Technical Services	27,950.00			27,950.00
Total Purchased Professional and Technical Services	\$35,980.40	\$15,969.60		\$51,950.00
500 Other Purchased Services				
580 Travel	553.71	1,618.91		2,172.62
Total Other Purchased Services	\$553.71	\$1,618.91		\$2,172.62
600 Supplies				
610 General Supplies	2,907.79	976.90	4,335.00	8,219.69
Total Supplies	\$2,907.79	\$976.90	\$4,335.00	\$8,219.69
800 Other Objects				
810 Dues and Fees	475.00	420.00		895.00
Total Other Objects	\$475.00	\$420.00		\$895.00
Total 1220 Sensory Support	\$268,687.83	\$236,170.70	\$4,335.00	\$509,193.53

General Fund (10)

1230 Emotional Support

	<u>Elementary</u>	<u>Secondary</u>	<u>Federal</u>	<u>Total</u>
100 Personnel Services – Salaries				
100 Personnel Services – Salaries	69,202.74	50,435.86	74,102.94	193,741.54
Total Personnel Services – Salaries	\$69,202.74	\$50,435.86	\$74,102.94	\$193,741.54
200 Personnel Services – Employee Benefits				
210 Group Insurance – Contracted Provider	32,557.38	34,919.29	1,150.06	68,626.73
220 Social Security Contributions	7,402.48	5,369.66	1,874.48	14,646.62
230 PSERS Retirement Contributions	28,851.01	21,411.57	7,317.67	57,580.25
292 Health Savings Accounts	433.34	216.67		650.01
Total Personnel Services – Employee Benefits	\$69,244.21	\$61,917.19	\$10,342.21	\$141,503.61
300 Purchased Professional and Technical Services				
322 Professional Educational Services – Ius			200.00	200.00
340 Technical Services	2,670.11	12,949.35		15,619.46
Total Purchased Professional and Technical Services	\$2,670.11	\$12,949.35	\$200.00	\$15,819.46
500 Other Purchased Services				
561 Tuition To Other School Districts Within the State		3,785.15		3,785.15
Total Other Purchased Services		\$3,785.15		\$3,785.15
600 Supplies				
610 General Supplies	1,742.52			1,742.52
640 Books and Periodicals	685.13			685.13
Total Supplies	\$2,427.65			\$2,427.65
Total 1230 Emotional Support	\$143,544.71	\$129,087.55	\$84,645.15	\$357,277.41

General Fund (10)

1240 Academic Support

	<u>Elementary</u>	<u>Secondary</u>	<u>Federal</u>	<u>Total</u>
100 Personnel Services – Salaries				
100 Personnel Services – Salaries	217,740.79	555,525.66	157,314.13	930,580.58
Total Personnel Services – Salaries	\$217,740.79	\$555,525.66	\$157,314.13	\$930,580.58
200 Personnel Services – Employee Benefits				
210 Group Insurance – Contracted Provider	112,582.60	166,347.53	3,942.38	282,872.51
220 Social Security Contributions	23,642.05	42,454.87	3,963.60	70,060.52
230 PSERS Retirement Contributions	91,666.49	168,136.09	15,747.14	275,549.72
292 Health Savings Accounts	1,299.99	2,448.33		3,748.32
Total Personnel Services – Employee Benefits	\$229,191.13	\$379,386.82	\$23,653.12	\$632,231.07
300 Purchased Professional and Technical Services				
329 Professional Educational Services – Other	364.12	3,829.33		4,193.45
Total Purchased Professional and Technical Services	\$364.12	\$3,829.33		\$4,193.45
500 Other Purchased Services				
561 Tuition To Other School Districts Within the State		8,884.17		8,884.17
580 Travel		436.33		436.33
Total Other Purchased Services		\$9,320.50		\$9,320.50
600 Supplies				
610 General Supplies	2,090.00	981.87		3,071.87
640 Books and Periodicals	57.97	326.31		384.28
Total Supplies	\$2,147.97	\$1,308.18		\$3,456.15
Total 1240 Academic Support	\$449,444.01	\$949,370.49	\$180,967.25	\$1,579,781.75

General Fund (10)

	<u>Elementary</u>	<u>Secondary</u>	<u>Federal</u>	<u>Total</u>
1241 Learning Support – Public				
100 Personnel Services – Salaries				
100 Personnel Services – Salaries	214,867.53	547,860.78	157,314.13	920,042.44
Total Personnel Services – Salaries	\$214,867.53	\$547,860.78	\$157,314.13	\$920,042.44
200 Personnel Services – Employee Benefits				
210 Group Insurance – Contracted Provider	112,222.48	164,252.96	3,942.38	280,417.82
220 Social Security Contributions	23,425.22	41,876.22	3,963.60	69,265.04
230 PSERS Retirement Contributions	90,803.57	165,834.36	15,747.14	272,385.07
292 Health Savings Accounts	1,299.99	2,383.33		3,683.32
Total Personnel Services – Employee Benefits	\$227,751.26	\$374,346.87	\$23,653.12	\$625,751.25
300 Purchased Professional and Technical Services				
329 Professional Educational Services – Other	364.12	3,829.33		4,193.45
Total Purchased Professional and Technical Services	\$364.12	\$3,829.33		\$4,193.45
500 Other Purchased Services				
561 Tuition To Other School Districts Within the State		8,884.17		8,884.17
Total Other Purchased Services		\$8,884.17		\$8,884.17
600 Supplies				
610 General Supplies	1,893.21	952.90		2,846.11
640 Books and Periodicals	57.97	326.31		384.28
Total Supplies	\$1,951.18	\$1,279.21		\$3,230.39
Total 1241 Learning Support – Public	\$444,934.09	\$936,200.36	\$180,967.25	\$1,562,101.70

General Fund (10)

1243 Gifted Support

	<u>Elementary</u>	<u>Secondary</u>	<u>Federal</u>	<u>Total</u>
100 Personnel Services – Salaries				
100 Personnel Services – Salaries	2,873.26	7,664.88		10,538.14
Total Personnel Services – Salaries	\$2,873.26	\$7,664.88		\$10,538.14
200 Personnel Services – Employee Benefits				
210 Group Insurance – Contracted Provider	360.12	2,094.57		2,454.69
220 Social Security Contributions	216.83	578.65		795.48
230 PSERS Retirement Contributions	862.92	2,301.73		3,164.65
292 Health Savings Accounts		65.00		65.00
Total Personnel Services – Employee Benefits	\$1,439.87	\$5,039.95		\$6,479.82
500 Other Purchased Services				
580 Travel		436.33		436.33
Total Other Purchased Services		\$436.33		\$436.33
600 Supplies				
610 General Supplies	196.79	28.97		225.76
Total Supplies	\$196.79	\$28.97		\$225.76
Total 1243 Gifted Support	\$4,509.92	\$13,170.13		\$17,680.05

General Fund (10)

1260 Physical Support

300 Purchased Professional and Technical Services

330 Other Professional Services

Total Purchased Professional and Technical Services

Total 1260 Physical Support

	<u>Elementary</u>	<u>Secondary</u>	<u>Federal</u>	<u>Total</u>
330 Other Professional Services	36,251.70	72,091.70		108,343.40
Total Purchased Professional and Technical Services	\$36,251.70	\$72,091.70		\$108,343.40
Total 1260 Physical Support	\$36,251.70	\$72,091.70		\$108,343.40

General Fund (10)

1280 Early Intervention Support

Elementary

Secondary

Federal

Total

300 Purchased Professional and Technical Services

322 Professional Educational Services – lus

13,309.00

13,309.00

Total Purchased Professional and Technical Services

\$13,309.00

\$13,309.00

Total 1280 Early Intervention Support

\$13,309.00

\$13,309.00

General Fund (10)

1290 Special Programs - Other Support

400 Purchased Property Services

	<u>Elementary</u>	<u>Secondary</u>	<u>Federal</u>	<u>Total</u>
440 Rentals	510.01	1,014.23		1,524.24
Total Purchased Property Services	\$510.01	\$1,014.23		\$1,524.24

500 Other Purchased Services

530 Communications	454.41	903.67		1,358.08
561 Tuition To Other School Districts Within the State	53,402.83	106,199.17		159,602.00
562 Tuition To Pennsylvania Charter Schools	17,937.78	35,671.83		53,609.61
567 Tuition To Approved Private Schools (APS) and PA Chartered Schools for the Deaf and Blind	45,972.01	91,421.93		137,393.94
580 Travel	559.17	1,111.98		1,671.15
Total Other Purchased Services	\$118,326.20	\$235,308.58		\$353,634.78

600 Supplies

610 General Supplies	2,097.45	4,171.08		6,268.53
650 Supplies & Fees – Technology Related	2,091.25	4,158.75		6,250.00
Total Supplies	\$4,188.70	\$8,329.83		\$12,518.53
Total 1290 Special Programs - Other Support	\$123,024.91	\$244,652.64		\$367,677.55

General Fund (10)

1300 Vocational Education

	<u>Elementary</u>	<u>Secondary</u>	<u>Federal</u>	<u>Total</u>
100 Personnel Services – Salaries				
100 Personnel Services – Salaries		387,725.13		387,725.13
Total Personnel Services – Salaries		\$387,725.13		\$387,725.13
200 Personnel Services – Employee Benefits				
210 Group Insurance – Contracted Provider		96,615.03		96,615.03
220 Social Security Contributions		29,318.34		29,318.34
230 PSERS Retirement Contributions		116,433.99		116,433.99
292 Health Savings Accounts		1,137.49		1,137.49
Total Personnel Services – Employee Benefits		\$243,504.85		\$243,504.85
300 Purchased Professional and Technical Services				
330 Other Professional Services		21,266.72		21,266.72
Total Purchased Professional and Technical Services		\$21,266.72		\$21,266.72
500 Other Purchased Services				
520 Insurance – General		885.00		885.00
Total Other Purchased Services		\$885.00		\$885.00
600 Supplies				
610 General Supplies		29,110.25		29,110.25
630 Food		72.00		72.00
640 Books and Periodicals		1,543.61		1,543.61
Total Supplies		\$30,725.86		\$30,725.86
700 Property				
752 Capital Equipment – Original and Additional		37,091.00		37,091.00
Total Property		\$37,091.00		\$37,091.00
800 Other Objects				
810 Dues and Fees		1,866.00		1,866.00
Total Other Objects		\$1,866.00		\$1,866.00
Total 1300 Vocational Education		\$723,064.56		\$723,064.56

General Fund (10)

	<u>Elementary</u>	<u>Secondary</u>	<u>Federal</u>	<u>Total</u>
1400 Other Instructional Programs – Elementary / Secondary				
100 Personnel Services – Salaries				
100 Personnel Services – Salaries	1,905.82	65,996.41		67,902.23
Total Personnel Services – Salaries	\$1,905.82	\$65,996.41		\$67,902.23
200 Personnel Services – Employee Benefits				
210 Group Insurance – Contracted Provider		7,785.16		7,785.16
220 Social Security Contributions	145.81	5,714.18		5,859.99
230 PSERS Retirement Contributions	440.36	20,919.94		21,360.30
292 Health Savings Accounts		216.67		216.67
Total Personnel Services – Employee Benefits	\$586.17	\$34,635.95		\$35,222.12
300 Purchased Professional and Technical Services				
323 Professional Educational Services – Other Educational Agencies		(227.64)		(227.64)
Total Purchased Professional and Technical Services		(\$227.64)		(\$227.64)
500 Other Purchased Services				
561 Tuition To Other School Districts Within the State		13,664.13		13,664.13
Total Other Purchased Services		\$13,664.13		\$13,664.13
Total 1400 Other Instructional Programs – Elementary / Secondary	\$2,491.99	\$114,068.85		\$116,560.84

General Fund (10)

1420 Summer School

100 Personnel Services – Salaries

100 Personnel Services – Salaries

Total Personnel Services – Salaries

200 Personnel Services – Employee Benefits

220 Social Security Contributions

230 PSERS Retirement Contributions

Total Personnel Services – Employee Benefits

Total 1420 Summer School

	<u>Elementary</u>	<u>Secondary</u>	<u>Federal</u>	<u>Total</u>
100 Personnel Services – Salaries	1,235.36	6,009.77		7,245.13
Total Personnel Services – Salaries	\$1,235.36	\$6,009.77		\$7,245.13
200 Personnel Services – Employee Benefits				
220 Social Security Contributions	94.51	459.87		554.38
230 PSERS Retirement Contributions	239.02	1,677.20		1,916.22
Total Personnel Services – Employee Benefits	\$333.53	\$2,137.07		\$2,470.60
Total 1420 Summer School	\$1,568.89	\$8,146.84		\$9,715.73

General Fund (10)

1430 Homebound Instruction

100 Personnel Services – Salaries

100 Personnel Services – Salaries

Total Personnel Services – Salaries

200 Personnel Services – Employee Benefits

220 Social Security Contributions

230 PSERS Retirement Contributions

Total Personnel Services – Employee Benefits

300 Purchased Professional and Technical Services

323 Professional Educational Services – Other Educational Agencies

Total Purchased Professional and Technical Services

Total 1430 Homebound Instruction

	<u>Elementary</u>	<u>Secondary</u>	<u>Federal</u>	<u>Total</u>
100 Personnel Services – Salaries	330.00	8,813.75		9,143.75
Total Personnel Services – Salaries	\$330.00	\$8,813.75		\$9,143.75
200 Personnel Services – Employee Benefits				
220 Social Security Contributions	25.25	674.35		699.60
230 PSERS Retirement Contributions	99.10	2,646.73		2,745.83
Total Personnel Services – Employee Benefits	\$124.35	\$3,321.08		\$3,445.43
300 Purchased Professional and Technical Services				
323 Professional Educational Services – Other Educational Agencies		(227.64)		(227.64)
Total Purchased Professional and Technical Services		(\$227.64)		(\$227.64)
Total 1430 Homebound Instruction	\$454.35	\$11,907.19		\$12,361.54

General Fund (10)

1440 Alternative Regular Education Programs

Elementary

Secondary

Federal

Total

500 Other Purchased Services

561 Tuition To Other School Districts Within the State

13,664.13

13,664.13

Total Other Purchased Services

\$13,664.13

\$13,664.13

Total 1440 Alternative Regular Education Programs

\$13,664.13

\$13,664.13

General Fund (10)

1441 Adjudicated / Court-Placed Programs

Elementary

Secondary

Federal

Total

500 Other Purchased Services

561 Tuition To Other School Districts Within the State

13,664.13

13,664.13

Total Other Purchased Services

\$13,664.13

\$13,664.13

Total 1441 Adjudicated / Court-Placed Programs

\$13,664.13

\$13,664.13

General Fund (10)

1490 Additional Other Instructional Programs

100 Personnel Services – Salaries

100 Personnel Services – Salaries

Total Personnel Services – Salaries

200 Personnel Services – Employee Benefits

210 Group Insurance – Contracted Provider

220 Social Security Contributions

230 PSERS Retirement Contributions

292 Health Savings Accounts

Total Personnel Services – Employee Benefits

Total 1490 Additional Other Instructional Programs

	<u>Elementary</u>	<u>Secondary</u>	<u>Federal</u>	<u>Total</u>
	340.46	51,172.89		51,513.35
	\$340.46	\$51,172.89		\$51,513.35
		7,785.16		7,785.16
	26.05	4,579.96		4,606.01
	102.24	16,596.01		16,698.25
		216.67		216.67
	\$128.29	\$29,177.80		\$29,306.09
	\$468.75	\$80,350.69		\$80,819.44

General Fund (10)

1500 Nonpublic School Programs

100 Personnel Services – Salaries

100 Personnel Services – Salaries

Total Personnel Services – Salaries

200 Personnel Services – Employee Benefits

210 Group Insurance – Contracted Provider

220 Social Security Contributions

230 PSERS Retirement Contributions

Total Personnel Services – Employee Benefits

300 Purchased Professional and Technical Services

329 Professional Educational Services – Other

Total Purchased Professional and Technical Services

800 Other Objects

810 Dues and Fees

Total Other Objects

Total 1500 Nonpublic School Programs

	<u>Elementary</u>	<u>Secondary</u>	<u>Federal</u>	<u>Total</u>
			36,508.20	36,508.20
			\$36,508.20	\$36,508.20
			2,747.09	2,747.09
			930.96	930.96
			3,654.47	3,654.47
			\$7,332.52	\$7,332.52
			5,409.00	5,409.00
			\$5,409.00	\$5,409.00
			173.33	173.33
			\$173.33	\$173.33
			\$49,423.05	\$49,423.05

General Fund (10)

1800 Pre-Kindergarten

Elementary

Secondary

Federal

Total

300 Purchased Professional and Technical Services

323 Professional Educational Services – Other Educational Agencies

125.27

Total Purchased Professional and Technical Services

\$125.27

Total 1800 Pre-Kindergarten

\$125.27

General Fund (10)

1801 Pre-K Instruction

Elementary

Secondary

Federal

Total

300 Purchased Professional and Technical Services

323 Professional Educational Services – Other Educational Agencies

125.27

Total Purchased Professional and Technical Services

\$125.27

Total 1801 Pre-K Instruction

\$125.27

General Fund (10)

2000 Support Services

Total

100 Personnel Services – Salaries

100 Personnel Services – Salaries 2,783,668.53

Total Personnel Services – Salaries \$2,783,668.53

200 Personnel Services – Employee Benefits

210 Group Insurance – Contracted Provider 716,388.43

220 Social Security Contributions 208,408.36

230 PSERS Retirement Contributions 790,117.97

240 Tuition Reimbursement 106,438.99

250 Unemployment Compensation 22,897.44

292 Health Savings Accounts 3,304.17

Total Personnel Services – Employee Benefits \$1,847,555.36

300 Purchased Professional and Technical Services

310 Official / Administrative Services 134,661.03

324 Professional Educational Services – Employee Training and Development Services 7,396.66

329 Professional Educational Services – Other 9,832.11

330 Other Professional Services 82,317.99

340 Technical Services 93,413.81

390 Other Purchased Professional and Technical Services 3,059.09

Total Purchased Professional and Technical Services \$330,680.69

400 Purchased Property Services

410 Cleaning Services 1,561,927.46

420 Utility Services 298,268.99

430 Repairs and Maintenance Services 7,494.93

440 Rentals 18,665.67

Total Purchased Property Services \$1,886,357.05

500 Other Purchased Services

513 Contracted Carriers 1,657,807.04

516 Student Transportation Services From the IU 49,216.96

520 Insurance – General 5,940.00

522 Automotive Liability Insurance 4,620.00

523 General Property and Liability Insurance 71,333.00

530 Communications 73,997.34

549 Other Advertising/Public Relations 21,101.05

550 Printing and Binding 35,378.30

580 Travel 57,514.12

595 IU Payments By Withholding 156,622.47

Total Other Purchased Services \$2,133,530.28

600 Supplies

610 General Supplies 373,118.34

620 Energy 95,619.31

630 Food (5,409.75)

640 Books and Periodicals 6,176.01

650 Supplies & Fees – Technology Related 72,673.23

General Fund (10)

2000 Support Services

Total Supplies	<u>Total</u>
	\$542,177.14

700 Property

762 Capitalized Equipment - Replacement	7,689.00
---	----------

Total Property	\$7,689.00
-----------------------	-------------------

800 Other Objects

810 Dues and Fees	30,027.30
-------------------	-----------

820 Claims and Judgments Against the LEA	13,162.50
--	-----------

890 Miscellaneous Expenditures	11.48
--------------------------------	-------

Total Other Objects	\$43,201.28
----------------------------	--------------------

Total 2000 Support Services	\$9,574,859.33
------------------------------------	-----------------------

General Fund (10)

	<u>Elementary</u>	<u>Secondary</u>	<u>Federal</u>	<u>Total</u>
2100 Support Services – Students				
100 Personnel Services – Salaries				
100 Personnel Services – Salaries	191,168.92	242,154.49	64,591.31	497,914.72
Total Personnel Services – Salaries	\$191,168.92	\$242,154.49	\$64,591.31	\$497,914.72
200 Personnel Services – Employee Benefits				
210 Group Insurance – Contracted Provider	42,863.87	52,989.74		95,853.61
220 Social Security Contributions	15,698.76	20,377.12	1,647.15	37,723.03
230 PSERS Retirement Contributions	62,088.29	80,670.36	6,465.10	149,223.75
250 Unemployment Compensation	7,661.48	15,235.96		22,897.44
292 Health Savings Accounts	976.87	539.80		1,516.67
Total Personnel Services – Employee Benefits	\$129,289.27	\$169,812.98	\$8,112.25	\$307,214.50
300 Purchased Professional and Technical Services				
330 Other Professional Services	1,500.00			57,104.99
340 Technical Services	1,299.75	2,584.75		3,884.50
Total Purchased Professional and Technical Services	\$2,799.75	\$2,584.75		\$60,989.49
400 Purchased Property Services				
430 Repairs and Maintenance Services	67.31	133.87		201.18
Total Purchased Property Services	\$67.31	\$133.87		\$201.18
500 Other Purchased Services				
530 Communications	501.90	998.10		1,500.00
580 Travel	642.70	707.26	668.06	2,018.02
Total Other Purchased Services	\$1,144.60	\$1,705.36	\$668.06	\$3,518.02
600 Supplies				
610 General Supplies	2,330.61	5,270.73		7,601.34
630 Food	(1,810.10)	(3,599.65)		(5,409.75)
640 Books and Periodicals	62.99			62.99
Total Supplies	\$583.50	\$1,671.08		\$2,254.58
800 Other Objects				
810 Dues and Fees	309.36	559.64		869.00
890 Miscellaneous Expenditures	3.84	7.64		11.48
Total Other Objects	\$313.20	\$567.28		\$880.48
Total 2100 Support Services – Students	\$325,366.55	\$418,629.81	\$73,371.62	\$872,972.97

General Fund (10)

2120 Guidance Services

	<u>Elementary</u>	<u>Secondary</u>	<u>Federal</u>	<u>Total</u>
100 Personnel Services – Salaries				
100 Personnel Services – Salaries	176,004.00	211,996.87	3,797.51	391,798.38
Total Personnel Services – Salaries	\$176,004.00	\$211,996.87	\$3,797.51	\$391,798.38
200 Personnel Services – Employee Benefits				
210 Group Insurance – Contracted Provider	42,863.87	52,989.74		95,853.61
220 Social Security Contributions	13,534.36	16,072.89	96.84	29,704.09
230 PSERS Retirement Contributions	53,461.83	63,515.40	379.63	117,356.86
292 Health Savings Accounts	976.87	539.80		1,516.67
Total Personnel Services – Employee Benefits	\$110,836.93	\$133,117.83	\$476.47	\$244,431.23
300 Purchased Professional and Technical Services				
330 Other Professional Services	1,500.00			1,500.00
Total Purchased Professional and Technical Services	\$1,500.00			\$1,500.00
500 Other Purchased Services				
580 Travel	302.13	30.00	668.06	1,000.19
Total Other Purchased Services	\$302.13	\$30.00	\$668.06	\$1,000.19
600 Supplies				
610 General Supplies	655.27	1,939.10		2,594.37
640 Books and Periodicals	62.99			62.99
Total Supplies	\$718.26	\$1,939.10		\$2,657.36
800 Other Objects				
810 Dues and Fees	214.00	370.00		584.00
890 Miscellaneous Expenditures	3.84	7.64		11.48
Total Other Objects	\$217.84	\$377.64		\$595.48
Total 2120 Guidance Services	\$289,579.16	\$347,461.44	\$4,942.04	\$641,982.64

General Fund (10)

2140 Psychological Services

	<u>Elementary</u>	<u>Secondary</u>	<u>Federal</u>	<u>Total</u>
100 Personnel Services – Salaries				
100 Personnel Services – Salaries	15,164.92	30,157.62	60,793.80	106,116.34
Total Personnel Services – Salaries	\$15,164.92	\$30,157.62	\$60,793.80	\$106,116.34
200 Personnel Services – Employee Benefits				
220 Social Security Contributions	2,164.40	4,304.23	1,550.31	8,018.94
230 PSERS Retirement Contributions	8,626.46	17,154.96	6,085.47	31,866.89
Total Personnel Services – Employee Benefits	\$10,790.86	\$21,459.19	\$7,635.78	\$39,885.83
300 Purchased Professional and Technical Services				
340 Technical Services	1,299.75	2,584.75		3,884.50
Total Purchased Professional and Technical Services	\$1,299.75	\$2,584.75		\$3,884.50
500 Other Purchased Services				
580 Travel	340.57	677.26		1,017.83
Total Other Purchased Services	\$340.57	\$677.26		\$1,017.83
600 Supplies				
610 General Supplies	1,602.25	3,186.29		4,788.54
Total Supplies	\$1,602.25	\$3,186.29		\$4,788.54
800 Other Objects				
810 Dues and Fees	95.36	189.64		285.00
Total Other Objects	\$95.36	\$189.64		\$285.00
Total 2140 Psychological Services	\$29,293.71	\$58,254.75	\$68,429.58	\$155,978.04

General Fund (10)

2160 Social Work Services

Elementary

Secondary

Federal

Total

300 Purchased Professional and Technical Services

330 Other Professional Services

55,604.99

Total Purchased Professional and Technical Services

\$55,604.99

Total 2160 Social Work Services

\$55,604.99

General Fund (10)

2190 Other Student Services

200 Personnel Services – Employee Benefits

250 Unemployment Compensation

Elementary Secondary Federal Total

7,661.48 15,235.96 22,897.44

Total Personnel Services – Employee Benefits

\$7,661.48 \$15,235.96 \$22,897.44

400 Purchased Property Services

430 Repairs and Maintenance Services

67.31 133.87 201.18

Total Purchased Property Services

\$67.31 \$133.87 \$201.18

500 Other Purchased Services

530 Communications

501.90 998.10 1,500.00

Total Other Purchased Services

\$501.90 \$998.10 \$1,500.00

600 Supplies

610 General Supplies

73.09 145.34 218.43

630 Food

(1,810.10) (3,599.65) (5,409.75)

Total Supplies

(\$1,737.01) (\$3,454.31) (\$5,191.32)

Total 2190 Other Student Services

\$6,493.68 \$12,913.62 \$19,407.30

LEA : 109248003 Saint Marys Area SD

Printed 12/14/2017 10:49:59 AM

Page - 8 of 44

General Fund (10)

	<u>Elementary</u>	<u>Secondary</u>	<u>Federal</u>	<u>Total</u>
2200 Support Services – Instructional Staff				
100 Personnel Services – Salaries				
100 Personnel Services – Salaries	176,584.47	221,879.61	20,385.65	418,849.73
Total Personnel Services – Salaries	\$176,584.47	\$221,879.61	\$20,385.65	\$418,849.73
200 Personnel Services – Employee Benefits				
210 Group Insurance – Contracted Provider	52,285.14	63,233.91		115,519.05
220 Social Security Contributions	13,467.45	17,085.98	513.45	31,066.88
230 PSERS Retirement Contributions	54,393.86	69,346.02	2,040.59	125,780.47
240 Tuition Reimbursement	35,614.49	70,824.50		106,438.99
292 Health Savings Accounts	433.33	54.17		487.50
Total Personnel Services – Employee Benefits	\$156,194.27	\$220,544.58	\$2,554.04	\$379,292.89
300 Purchased Professional and Technical Services				
324 Professional Educational Services – Employee Training and Development Services	2,474.92	4,921.74		7,396.66
329 Professional Educational Services – Other	1,673.00	3,327.00		5,000.00
330 Other Professional Services	267.68	532.32		800.00
340 Technical Services	20,380.49	40,529.51		60,910.00
Total Purchased Professional and Technical Services	\$24,796.09	\$49,310.57		\$74,106.66
400 Purchased Property Services				
430 Repairs and Maintenance Services	2,606.12	5,182.63		7,788.75
Total Purchased Property Services	\$2,606.12	\$5,182.63		\$7,788.75
500 Other Purchased Services				
520 Insurance – General	1,820.22	3,619.78		5,440.00
530 Communications	13,890.12	27,622.49		41,512.61
580 Travel	10,446.33	19,920.66	2,537.58	32,904.57
Total Other Purchased Services	\$26,156.67	\$51,162.93	\$2,537.58	\$79,857.18
600 Supplies				
610 General Supplies	104,743.73	189,170.85		293,914.58
640 Books and Periodicals	3,230.32	2,626.10		5,856.42
650 Supplies & Fees – Technology Related	24,587.49	48,085.74		72,673.23
Total Supplies	\$132,561.54	\$239,882.69		\$372,444.23
800 Other Objects				
810 Dues and Fees	430.37	538.63	5,026.67	5,995.67
Total Other Objects	\$430.37	\$538.63	\$5,026.67	\$5,995.67
Total 2200 Support Services – Instructional Staff	\$519,329.53	\$788,501.64	\$30,503.94	\$1,338,335.11

General Fund (10)

	<u>Elementary</u>	<u>Secondary</u>	<u>Federal</u>	<u>Total</u>
2240 Computer-Assisted Instruction Support Services				
300 <u>Purchased Professional and Technical Services</u>				
330 Other Professional Services	267.68	532.32		800.00
340 Technical Services	20,380.49	40,529.51		60,910.00
Total Purchased Professional and Technical Services	\$20,648.17	\$41,061.83		\$61,710.00
400 <u>Purchased Property Services</u>				
430 Repairs and Maintenance Services	2,606.12	5,182.63		7,788.75
Total Purchased Property Services	\$2,606.12	\$5,182.63		\$7,788.75
500 <u>Other Purchased Services</u>				
520 Insurance – General	1,820.22	3,619.78		5,440.00
530 Communications	13,890.12	27,622.49		41,512.61
580 Travel	1,485.45	2,954.02		4,439.47
Total Other Purchased Services	\$17,195.79	\$34,196.29		\$51,392.08
600 <u>Supplies</u>				
610 General Supplies	101,296.03	187,207.42		288,503.45
650 Supplies & Fees – Technology Related	23,147.49	46,032.11		69,179.60
Total Supplies	\$124,443.52	\$233,239.53		\$357,683.05
Total 2240 Computer-Assisted Instruction Support Services	\$164,893.60	\$313,680.28		\$478,573.88

General Fund (10)

2250 School Library Services

	<u>Elementary</u>	<u>Secondary</u>	<u>Federal</u>	<u>Total</u>
100 Personnel Services – Salaries				
100 Personnel Services – Salaries	75,506.63	30,877.55		106,384.18
Total Personnel Services – Salaries	\$75,506.63	\$30,877.55		\$106,384.18
200 Personnel Services – Employee Benefits				
210 Group Insurance – Contracted Provider	23,935.74	6,857.07		30,792.81
220 Social Security Contributions	5,652.87	2,311.32		7,964.19
230 PSERS Retirement Contributions	22,674.67	9,272.50		31,947.17
292 Health Savings Accounts	433.33	54.17		487.50
Total Personnel Services – Employee Benefits	\$52,696.61	\$18,495.06		\$71,191.67
500 Other Purchased Services				
580 Travel	593.64	327.18		920.82
Total Other Purchased Services	\$593.64	\$327.18		\$920.82
600 Supplies				
610 General Supplies	3,115.25	1,302.31		4,417.56
640 Books and Periodicals	3,163.73	2,493.68		5,657.41
650 Supplies & Fees – Technology Related	1,440.00	2,053.63		3,493.63
Total Supplies	\$7,718.98	\$5,849.62		\$13,568.60
800 Other Objects				
810 Dues and Fees	310.25	299.75		610.00
Total Other Objects	\$310.25	\$299.75		\$610.00
Total 2250 School Library Services	\$136,826.11	\$55,849.16		\$192,675.27

General Fund (10)

2260 Instruction and Curriculum Development Services

	<u>Elementary</u>	<u>Secondary</u>	<u>Federal</u>	<u>Total</u>
100 Personnel Services – Salaries				
100 Personnel Services – Salaries	93,629.85	175,805.67	20,385.65	289,821.17
Total Personnel Services – Salaries	\$93,629.85	\$175,805.67	\$20,385.65	\$289,821.17
200 Personnel Services – Employee Benefits				
210 Group Insurance – Contracted Provider	28,349.40	56,376.84		84,726.24
220 Social Security Contributions	7,246.99	13,616.47	513.45	21,376.91
230 PSERS Retirement Contributions	29,482.51	55,509.92	2,040.59	87,033.02
Total Personnel Services – Employee Benefits	\$65,078.90	\$125,503.23	\$2,554.04	\$193,136.17
300 Purchased Professional and Technical Services				
329 Professional Educational Services – Other	1,673.00	3,327.00		5,000.00
Total Purchased Professional and Technical Services	\$1,673.00	\$3,327.00		\$5,000.00
500 Other Purchased Services				
580 Travel	621.16	1,235.26		1,856.42
Total Other Purchased Services	\$621.16	\$1,235.26		\$1,856.42
600 Supplies				
610 General Supplies	332.45	661.12		993.57
Total Supplies	\$332.45	\$661.12		\$993.57
800 Other Objects				
810 Dues and Fees	120.12	238.88		359.00
Total Other Objects	\$120.12	\$238.88		\$359.00
Total 2260 Instruction and Curriculum Development Services	\$161,455.48	\$306,771.16	\$22,939.69	\$491,166.33

General Fund (10)

	<u>Elementary</u>	<u>Secondary</u>	<u>Federal</u>	<u>Total</u>
2270 Instructional Staff Professional Development Services				
100 Personnel Services – Salaries				
100 Personnel Services – Salaries	7,447.99	14,811.39		22,259.38
Total Personnel Services – Salaries	\$7,447.99	\$14,811.39		\$22,259.38
200 Personnel Services – Employee Benefits				
220 Social Security Contributions	567.59	1,128.72		1,696.31
230 PSERS Retirement Contributions	2,236.68	4,447.96		6,684.64
240 Tuition Reimbursement	35,614.49	70,824.50		106,438.99
Total Personnel Services – Employee Benefits	\$38,418.76	\$76,401.18		\$114,819.94
300 Purchased Professional and Technical Services				
324 Professional Educational Services – Employee Training and Development Services	2,474.92	4,921.74		7,396.66
Total Purchased Professional and Technical Services	\$2,474.92	\$4,921.74		\$7,396.66
500 Other Purchased Services				
580 Travel	7,746.08	15,404.20	2,537.58	25,687.86
Total Other Purchased Services	\$7,746.08	\$15,404.20	\$2,537.58	\$25,687.86
600 Supplies				
640 Books and Periodicals	66.59	132.42		199.01
Total Supplies	\$66.59	\$132.42		\$199.01
800 Other Objects				
810 Dues and Fees			5,026.67	5,026.67
Total Other Objects			\$5,026.67	\$5,026.67
Total 2270 Instructional Staff Professional Development Services	\$56,154.34	\$111,670.93	\$7,564.25	\$175,389.52

General Fund (10)

2290 Other Instructional Staff Services

100 Personnel Services – Salaries

	<u>Elementary</u>	<u>Secondary</u>	<u>Federal</u>	<u>Total</u>
100 Personnel Services – Salaries		385.00		385.00

Total Personnel Services – Salaries

\$385.00		\$385.00	
-----------------	--	-----------------	--

200 Personnel Services – Employee Benefits

220 Social Security Contributions		29.47		29.47
230 PSERS Retirement Contributions		115.64		115.64

Total Personnel Services – Employee Benefits

\$145.11		\$145.11	
-----------------	--	-----------------	--

Total 2290 Other Instructional Staff Services

\$530.11		\$530.11	
-----------------	--	-----------------	--

General Fund (10)

2300 Support Services – Administration

	<u>Elementary</u>	<u>Secondary</u>	<u>Federal</u>	<u>Total</u>
100 Personnel Services – Salaries				
100 Personnel Services – Salaries	509,055.78	384,020.76		1,190,799.15
Total Personnel Services – Salaries	\$509,055.78	\$384,020.76		\$1,190,799.15
200 Personnel Services – Employee Benefits				
210 Group Insurance – Contracted Provider	135,383.99	116,800.96		300,644.16
220 Social Security Contributions	38,649.65	28,931.73		88,701.05
230 PSERS Retirement Contributions	144,393.99	114,952.56		326,267.20
Total Personnel Services – Employee Benefits	\$318,427.63	\$260,685.25		\$715,612.41
300 Purchased Professional and Technical Services				
310 Official / Administrative Services				134,661.03
329 Professional Educational Services – Other	50.65			50.65
340 Technical Services				1,160.00
Total Purchased Professional and Technical Services	\$50.65			\$135,871.68
400 Purchased Property Services				
440 Rentals	7,238.85	3,699.53		10,938.38
Total Purchased Property Services	\$7,238.85	\$3,699.53		\$10,938.38
500 Other Purchased Services				
520 Insurance – General				500.00
530 Communications	2,305.97	10,590.78		15,911.72
549 Other Advertising/Public Relations				990.00
550 Printing and Binding	2,264.05	43.30		35,378.30
580 Travel	2,723.47	1,387.47	1,301.14	15,827.02
Total Other Purchased Services	\$7,293.49	\$12,021.55	\$1,301.14	\$68,607.04
600 Supplies				
610 General Supplies	4,848.03	5,303.92		17,466.81
Total Supplies	\$4,848.03	\$5,303.92		\$17,466.81
800 Other Objects				
810 Dues and Fees	498.62	1,527.04		18,229.55
820 Claims and Judgments Against the LEA				13,162.50
Total Other Objects	\$498.62	\$1,527.04		\$31,392.05
Total 2300 Support Services – Administration	\$847,413.05	\$667,258.05	\$1,301.14	\$2,170,687.52

General Fund (10)

2310 Board Services

Elementary

Secondary

Federal

Total

100 Personnel Services – Salaries

100 Personnel Services – Salaries

8,719.36

Total Personnel Services – Salaries

\$8,719.36

200 Personnel Services – Employee Benefits

210 Group Insurance – Contracted Provider

2,520.03

220 Social Security Contributions

661.89

230 PSERS Retirement Contributions

2,618.46

Total Personnel Services – Employee Benefits

\$5,800.38

500 Other Purchased Services

580 Travel

1,610.73

Total Other Purchased Services

\$1,610.73

600 Supplies

610 General Supplies

2,124.21

Total Supplies

\$2,124.21

800 Other Objects

810 Dues and Fees

11,726.14

820 Claims and Judgments Against the LEA

13,162.50

Total Other Objects

\$24,888.64

Total 2310 Board Services

\$43,143.32

General Fund (10)

2320 Board Treasurer Services

Elementary

Secondary

Federal

Total

500 Other Purchased Services

520 Insurance – General

500.00

Total Other Purchased Services

\$500.00

Total 2320 Board Treasurer Services

\$500.00

General Fund (10)

2330 Tax Assessment and Collection Services

Elementary

Secondary

Federal

Total

100 Personnel Services – Salaries

100 Personnel Services – Salaries

74,876.37

Total Personnel Services – Salaries

\$74,876.37

200 Personnel Services – Employee Benefits

220 Social Security Contributions

5,728.04

Total Personnel Services – Employee Benefits

\$5,728.04

300 Purchased Professional and Technical Services

310 Official / Administrative Services

108,631.92

340 Technical Services

1,160.00

Total Purchased Professional and Technical Services

\$109,791.92

500 Other Purchased Services

530 Communications

3,014.97

550 Printing and Binding

33,070.95

Total Other Purchased Services

\$36,085.92

600 Supplies

610 General Supplies

596.61

Total Supplies

\$596.61

Total 2330 Tax Assessment and Collection Services

\$227,078.86

General Fund (10)

2350 Legal and Accounting Services

Elementary

Secondary

Federal

Total

300 Purchased Professional and Technical Services

310 Official / Administrative Services

26,029.11

Total Purchased Professional and Technical Services

\$26,029.11

Total 2350 Legal and Accounting Services

\$26,029.11

General Fund (10)

2360 Office of the Superintendent / Executive Director Services

Elementary

Secondary

Federal

Total

100 Personnel Services – Salaries

100 Personnel Services – Salaries

214,126.88

Total Personnel Services – Salaries

\$214,126.88

200 Personnel Services – Employee Benefits

210 Group Insurance – Contracted Provider

45,939.18

220 Social Security Contributions

14,729.74

230 PSERS Retirement Contributions

64,302.19

Total Personnel Services – Employee Benefits

\$124,971.11

500 Other Purchased Services

580 Travel

8,804.21

Total Other Purchased Services

\$8,804.21

600 Supplies

610 General Supplies

4,594.04

Total Supplies

\$4,594.04

800 Other Objects

810 Dues and Fees

4,197.75

Total Other Objects

\$4,197.75

Total 2360 Office of the Superintendent / Executive Director Services

\$356,693.99

General Fund (10)

2370 Community Relations Services

Elementary

Secondary

Federal

Total

500 Other Purchased Services

549 Other Advertising/Public Relations

990.00

Total Other Purchased Services

\$990.00

800 Other Objects

810 Dues and Fees

280.00

Total Other Objects

\$280.00

Total 2370 Community Relations Services

\$1,270.00

General Fund (10)

2380 Office of the Principal Services

	<u>Elementary</u>	<u>Secondary</u>	<u>Federal</u>	<u>Total</u>
100 Personnel Services – Salaries				
100 Personnel Services – Salaries	509,055.78	384,020.76		893,076.54
Total Personnel Services – Salaries	\$509,055.78	\$384,020.76		\$893,076.54
200 Personnel Services – Employee Benefits				
210 Group Insurance – Contracted Provider	135,383.99	116,800.96		252,184.95
220 Social Security Contributions	38,649.65	28,931.73		67,581.38
230 PSERS Retirement Contributions	144,393.99	114,952.56		259,346.55
Total Personnel Services – Employee Benefits	\$318,427.63	\$260,685.25		\$579,112.88
300 Purchased Professional and Technical Services				
329 Professional Educational Services – Other	50.65			50.65
Total Purchased Professional and Technical Services	\$50.65			\$50.65
400 Purchased Property Services				
440 Rentals	7,238.85	3,699.53		10,938.38
Total Purchased Property Services	\$7,238.85	\$3,699.53		\$10,938.38
500 Other Purchased Services				
530 Communications	2,305.97	10,590.78		12,896.75
550 Printing and Binding	2,264.05	43.30		2,307.35
580 Travel	2,723.47	1,387.47	1,301.14	5,412.08
Total Other Purchased Services	\$7,293.49	\$12,021.55	\$1,301.14	\$20,616.18
600 Supplies				
610 General Supplies	4,848.03	5,303.92		10,151.95
Total Supplies	\$4,848.03	\$5,303.92		\$10,151.95
800 Other Objects				
810 Dues and Fees	498.62	1,527.04		2,025.66
Total Other Objects	\$498.62	\$1,527.04		\$2,025.66
Total 2380 Office of the Principal Services	\$847,413.05	\$667,258.05	\$1,301.14	\$1,515,972.24

General Fund (10)

2400 Support Services – Pupil Health

	<u>Elementary</u>	<u>Secondary</u>	<u>Federal</u>	<u>Total</u>
--	-------------------	------------------	----------------	--------------

100 Personnel Services – Salaries

100 Personnel Services – Salaries				245,878.30
-----------------------------------	--	--	--	------------

Total Personnel Services – Salaries				\$245,878.30
--	--	--	--	---------------------

200 Personnel Services – Employee Benefits

210 Group Insurance – Contracted Provider				75,171.22
---	--	--	--	-----------

220 Social Security Contributions				18,624.49
-----------------------------------	--	--	--	-----------

230 PSERS Retirement Contributions				70,490.40
------------------------------------	--	--	--	-----------

292 Health Savings Accounts				866.67
-----------------------------	--	--	--	--------

Total Personnel Services – Employee Benefits				\$165,152.78
---	--	--	--	---------------------

300 Purchased Professional and Technical Services

330 Other Professional Services				713.00
---------------------------------	--	--	--	--------

Total Purchased Professional and Technical Services				\$713.00
--	--	--	--	-----------------

500 Other Purchased Services

530 Communications				408.04
--------------------	--	--	--	--------

580 Travel				1,449.38
------------	--	--	--	----------

Total Other Purchased Services				\$1,857.42
---------------------------------------	--	--	--	-------------------

600 Supplies

610 General Supplies				20,223.84
----------------------	--	--	--	-----------

640 Books and Periodicals				256.60
---------------------------	--	--	--	--------

Total Supplies				\$20,480.44
-----------------------	--	--	--	--------------------

800 Other Objects

810 Dues and Fees				622.50
-------------------	--	--	--	--------

Total Other Objects				\$622.50
----------------------------	--	--	--	-----------------

Total 2400 Support Services – Pupil Health				\$434,704.44
---	--	--	--	---------------------

General Fund (10)

2420 Medical Services

600 Supplies

610 General Supplies

640 Books and Periodicals

Total Supplies

Total 2420 Medical Services

Elementary

Secondary

Federal

Total

2,297.38

59.89

\$2,357.27

\$2,357.27

General Fund (10)

2430 Dental Services

600 Supplies

610 General Supplies

	<u>Elementary</u>	<u>Secondary</u>	<u>Federal</u>	<u>Total</u>
Total Supplies				456.71
Total 2430 Dental Services				\$456.71

General Fund (10)

2440 Nursing Services

	<u>Elementary</u>	<u>Secondary</u>	<u>Federal</u>	<u>Total</u>
--	-------------------	------------------	----------------	--------------

100 Personnel Services – Salaries

100 Personnel Services – Salaries				196,867.38
-----------------------------------	--	--	--	------------

Total Personnel Services – Salaries				\$196,867.38
--	--	--	--	---------------------

200 Personnel Services – Employee Benefits

210 Group Insurance – Contracted Provider				60,998.13
---	--	--	--	-----------

220 Social Security Contributions				14,907.73
-----------------------------------	--	--	--	-----------

230 PSERS Retirement Contributions				55,952.61
------------------------------------	--	--	--	-----------

292 Health Savings Accounts				806.00
-----------------------------	--	--	--	--------

Total Personnel Services – Employee Benefits				\$132,664.47
---	--	--	--	---------------------

300 Purchased Professional and Technical Services

330 Other Professional Services				683.00
---------------------------------	--	--	--	--------

Total Purchased Professional and Technical Services				\$683.00
--	--	--	--	-----------------

500 Other Purchased Services

530 Communications				408.04
--------------------	--	--	--	--------

580 Travel				1,449.38
------------	--	--	--	----------

Total Other Purchased Services				\$1,857.42
---------------------------------------	--	--	--	-------------------

600 Supplies

610 General Supplies				15,577.43
----------------------	--	--	--	-----------

640 Books and Periodicals				196.71
---------------------------	--	--	--	--------

Total Supplies				\$15,774.14
-----------------------	--	--	--	--------------------

800 Other Objects

810 Dues and Fees				622.50
-------------------	--	--	--	--------

Total Other Objects				\$622.50
----------------------------	--	--	--	-----------------

Total 2440 Nursing Services				\$348,468.91
------------------------------------	--	--	--	---------------------

General Fund (10)

2450 Nonpublic Health Services

Elementary

Secondary

Federal

Total

100 Personnel Services – Salaries

100 Personnel Services – Salaries

49,010.92

Total Personnel Services – Salaries

\$49,010.92

200 Personnel Services – Employee Benefits

210 Group Insurance – Contracted Provider

14,173.09

220 Social Security Contributions

3,716.76

230 PSERS Retirement Contributions

14,537.79

292 Health Savings Accounts

60.67

Total Personnel Services – Employee Benefits

\$32,488.31

300 Purchased Professional and Technical Services

330 Other Professional Services

30.00

Total Purchased Professional and Technical Services

\$30.00

600 Supplies

610 General Supplies

696.00

Total Supplies

\$696.00

Total 2450 Nonpublic Health Services

\$82,225.23

General Fund (10)

2490 Other Health Services

Elementary

Secondary

Federal

Total

600 Supplies

610 General Supplies

1,196.32

Total Supplies

\$1,196.32

Total 2490 Other Health Services

\$1,196.32

General Fund (10)

2500 Support Services – Business

Elementary

Secondary

Federal

Total

100 Personnel Services – Salaries

100 Personnel Services – Salaries

210,855.11

Total Personnel Services – Salaries

\$210,855.11

200 Personnel Services – Employee Benefits

210 Group Insurance – Contracted Provider

59,048.19

220 Social Security Contributions

15,863.21

230 PSERS Retirement Contributions

62,418.59

Total Personnel Services – Employee Benefits

\$137,329.99

300 Purchased Professional and Technical Services

329 Professional Educational Services – Other

4,781.46

330 Other Professional Services

23,700.00

Total Purchased Professional and Technical Services

\$28,481.46

400 Purchased Property Services

440 Rentals

6,984.79

Total Purchased Property Services

\$6,984.79

500 Other Purchased Services

530 Communications

47.50

549 Other Advertising/Public Relations

20,111.05

580 Travel

1,685.06

Total Other Purchased Services

\$21,843.61

600 Supplies

610 General Supplies

28,646.40

Total Supplies

\$28,646.40

800 Other Objects

810 Dues and Fees

4,310.58

Total Other Objects

\$4,310.58

Total 2500 Support Services – Business

\$438,451.94

General Fund (10)

2510 Fiscal Services

Elementary

Secondary

Federal

Total

100 Personnel Services – Salaries

100 Personnel Services – Salaries

210,855.11

Total Personnel Services – Salaries

\$210,855.11

200 Personnel Services – Employee Benefits

210 Group Insurance – Contracted Provider

59,048.19

220 Social Security Contributions

15,863.21

230 PSERS Retirement Contributions

62,418.59

Total Personnel Services – Employee Benefits

\$137,329.99

300 Purchased Professional and Technical Services

329 Professional Educational Services – Other

4,781.46

330 Other Professional Services

23,700.00

Total Purchased Professional and Technical Services

\$28,481.46

400 Purchased Property Services

440 Rentals

6,984.79

Total Purchased Property Services

\$6,984.79

500 Other Purchased Services

530 Communications

47.50

549 Other Advertising/Public Relations

20,111.05

580 Travel

1,685.06

Total Other Purchased Services

\$21,843.61

600 Supplies

610 General Supplies

28,646.40

Total Supplies

\$28,646.40

800 Other Objects

810 Dues and Fees

4,310.58

Total Other Objects

\$4,310.58

Total 2510 Fiscal Services

\$438,451.94

General Fund (10)

2511 Supervision of Fiscal Services - Head of Component

Elementary

Secondary

Federal

Total

100 Personnel Services – Salaries

100 Personnel Services – Salaries

73,830.64

Total Personnel Services – Salaries

\$73,830.64

200 Personnel Services – Employee Benefits

210 Group Insurance – Contracted Provider

18,272.93

220 Social Security Contributions

5,605.59

230 PSERS Retirement Contributions

22,171.24

Total Personnel Services – Employee Benefits

\$46,049.76

500 Other Purchased Services

580 Travel

958.81

Total Other Purchased Services

\$958.81

800 Other Objects

810 Dues and Fees

452.00

Total Other Objects

\$452.00

Total 2511 Supervision of Fiscal Services - Head of Component

\$121,291.21

General Fund (10)

2515 Financial Accounting Services

Elementary

Secondary

Federal

Total

100 Personnel Services – Salaries

100 Personnel Services – Salaries

137,024.47

Total Personnel Services – Salaries

\$137,024.47

200 Personnel Services – Employee Benefits

210 Group Insurance – Contracted Provider

40,775.26

220 Social Security Contributions

10,257.62

230 PSERS Retirement Contributions

40,247.35

Total Personnel Services – Employee Benefits

\$91,280.23

300 Purchased Professional and Technical Services

329 Professional Educational Services – Other

4,781.46

330 Other Professional Services

23,700.00

Total Purchased Professional and Technical Services

\$28,481.46

400 Purchased Property Services

440 Rentals

6,984.79

Total Purchased Property Services

\$6,984.79

500 Other Purchased Services

530 Communications

47.50

549 Other Advertising/Public Relations

20,111.05

580 Travel

726.25

Total Other Purchased Services

\$20,884.80

600 Supplies

610 General Supplies

28,646.40

Total Supplies

\$28,646.40

800 Other Objects

810 Dues and Fees

3,858.58

Total Other Objects

\$3,858.58

Total 2515 Financial Accounting Services

\$317,160.73

General Fund (10)

2600 Operation and Maintenance of Plant Services

Elementary

Secondary

Federal

Total

100 Personnel Services – Salaries

100 Personnel Services – Salaries

97,965.23

Total Personnel Services – Salaries

\$97,965.23

200 Personnel Services – Employee Benefits

210 Group Insurance – Contracted Provider

20,415.42

220 Social Security Contributions

7,192.36

230 PSERS Retirement Contributions

19,922.29

292 Health Savings Accounts

433.33

Total Personnel Services – Employee Benefits

\$47,963.40

300 Purchased Professional and Technical Services

340 Technical Services

27,459.31

390 Other Purchased Professional and Technical Services

3,059.09

Total Purchased Professional and Technical Services

\$30,518.40

400 Purchased Property Services

410 Cleaning Services

1,561,927.46

420 Utility Services

298,268.99

430 Repairs and Maintenance Services

(495.00)

440 Rentals

742.50

Total Purchased Property Services

\$1,860,443.95

500 Other Purchased Services

522 Automotive Liability Insurance

4,620.00

523 General Property and Liability Insurance

71,333.00

530 Communications

14,617.47

580 Travel

3,630.07

Total Other Purchased Services

\$94,200.54

600 Supplies

610 General Supplies

1,570.43

3,123.00

4,693.43

620 Energy

95,619.31

Total Supplies

\$1,570.43

\$3,123.00

\$100,312.74

700 Property

762 Capitalized Equipment - Replacement

7,689.00

Total Property

\$7,689.00

Total 2600 Operation and Maintenance of Plant Services

\$1,570.43

\$3,123.00

\$2,239,093.26

General Fund (10)

2620 Operation of Buildings Services

300 Purchased Professional and Technical Services

	<u>Elementary</u>	<u>Secondary</u>	<u>Federal</u>	<u>Total</u>
340 Technical Services				27,459.31
390 Other Purchased Professional and Technical Services				3,059.09

Total Purchased Professional and Technical Services				\$30,518.40
--	--	--	--	--------------------

400 Purchased Property Services

410 Cleaning Services				1,561,927.46
420 Utility Services				298,268.99
430 Repairs and Maintenance Services				(495.00)
440 Rentals				742.50

Total Purchased Property Services				\$1,860,443.95
--	--	--	--	-----------------------

500 Other Purchased Services

522 Automotive Liability Insurance				1,000.00
523 General Property and Liability Insurance				71,333.00
530 Communications				14,617.47
580 Travel				893.34

Total Other Purchased Services				\$87,843.81
---------------------------------------	--	--	--	--------------------

600 Supplies

610 General Supplies	7.85	15.60		23.45
620 Energy				95,089.94

Total Supplies	\$7.85	\$15.60		\$95,113.39
-----------------------	---------------	----------------	--	--------------------

700 Property

762 Capitalized Equipment - Replacement				7,689.00
---	--	--	--	----------

Total Property				\$7,689.00
-----------------------	--	--	--	-------------------

Total 2620 Operation of Buildings Services	\$7.85	\$15.60		\$2,081,608.55
---	---------------	----------------	--	-----------------------

General Fund (10)

	<u>Elementary</u>	<u>Secondary</u>	<u>Federal</u>	<u>Total</u>
2650 Vehicle Operation and Maintenance Services (Other Than Student Transportation Vehicles)				
500 Other Purchased Services				
522 Automotive Liability Insurance				3,620.00
Total Other Purchased Services				\$3,620.00
600 Supplies				
620 Energy				529.37
Total Supplies				\$529.37
Total 2650 Vehicle Operation and Maintenance Services (Other Than Student Transportation Vehicles)				\$4,149.37

General Fund (10)

2660 Safety and Security Services

100 Personnel Services – Salaries

100 Personnel Services – Salaries				68,950.10
-----------------------------------	--	--	--	-----------

Total Personnel Services – Salaries				\$68,950.10
--	--	--	--	--------------------

200 Personnel Services – Employee Benefits

210 Group Insurance – Contracted Provider				20,415.42
---	--	--	--	-----------

220 Social Security Contributions				5,107.88
-----------------------------------	--	--	--	----------

230 PSERS Retirement Contributions				19,922.29
------------------------------------	--	--	--	-----------

292 Health Savings Accounts				433.33
-----------------------------	--	--	--	--------

Total Personnel Services – Employee Benefits				\$45,878.92
---	--	--	--	--------------------

500 Other Purchased Services

580 Travel				2,736.73
------------	--	--	--	----------

Total Other Purchased Services				\$2,736.73
---------------------------------------	--	--	--	-------------------

600 Supplies

610 General Supplies	1,562.58	3,107.40		4,669.98
----------------------	----------	----------	--	----------

Total Supplies	\$1,562.58	\$3,107.40		\$4,669.98
-----------------------	-------------------	-------------------	--	-------------------

Total 2660 Safety and Security Services	\$1,562.58	\$3,107.40		\$122,235.73
--	-------------------	-------------------	--	---------------------

General Fund (10)

	<u>Elementary</u>	<u>Secondary</u>	<u>Federal</u>	<u>Total</u>
2690 Other Operation and Maintenance of Plant Services				
100 Personnel Services – Salaries				
100 Personnel Services – Salaries				29,015.13
Total Personnel Services – Salaries				\$29,015.13
200 Personnel Services – Employee Benefits				
220 Social Security Contributions				2,084.48
Total Personnel Services – Employee Benefits				\$2,084.48
Total 2690 Other Operation and Maintenance of Plant Services				\$31,099.61

General Fund (10)

	<u>Elementary</u>	<u>Secondary</u>	<u>Federal</u>	<u>Total</u>
2700 Student Transportation Services				
100 Personnel Services – Salaries				
100 Personnel Services – Salaries				39,025.59
Total Personnel Services – Salaries				\$39,025.59
200 Personnel Services – Employee Benefits				
220 Social Security Contributions				2,955.16
230 PSERS Retirement Contributions				11,576.75
Total Personnel Services – Employee Benefits				\$14,531.91
500 Other Purchased Services				
513 Contracted Carriers				1,657,807.04
516 Student Transportation Services From the IU				49,216.96
Total Other Purchased Services				\$1,707,024.00
600 Supplies				
610 General Supplies				571.94
Total Supplies				\$571.94
Total 2700 Student Transportation Services				\$1,761,153.44

General Fund (10)

2720 Vehicle Operation Services

Elementary

Secondary

Federal

Total

500 Other Purchased Services

513 Contracted Carriers

1,080,279.46

516 Student Transportation Services From the IU

49,216.96

Total Other Purchased Services

\$1,129,496.42

600 Supplies

610 General Supplies

571.94

Total Supplies

\$571.94

Total 2720 Vehicle Operation Services

\$1,130,068.36

General Fund (10)

2730 Monitoring Services

Elementary

Secondary

Federal

Total

100 Personnel Services – Salaries

100 Personnel Services – Salaries

39,025.59

Total Personnel Services – Salaries

\$39,025.59

200 Personnel Services – Employee Benefits

220 Social Security Contributions

2,955.16

230 PSERS Retirement Contributions

11,576.75

Total Personnel Services – Employee Benefits

\$14,531.91

Total 2730 Monitoring Services

\$53,557.50

General Fund (10)

2750 Nonpublic Transportation

Elementary

Secondary

Federal

Total

500 Other Purchased Services

513 Contracted Carriers

577,527.58

Total Other Purchased Services

\$577,527.58

Total 2750 Nonpublic Transportation

\$577,527.58

General Fund (10)

2800 Support Services – Central

Elementary

Secondary

Federal

Total

100 Personnel Services – Salaries

100 Personnel Services – Salaries

82,380.70

Total Personnel Services – Salaries

\$82,380.70

200 Personnel Services – Employee Benefits

210 Group Insurance – Contracted Provider

20,946.55

220 Social Security Contributions

6,282.18

230 PSERS Retirement Contributions

24,438.52

Total Personnel Services – Employee Benefits

\$51,667.25

Total 2800 Support Services – Central

\$134,047.95

General Fund (10)

2810 Planning, Research, Development and Evaluation Services

Elementary

Secondary

Federal

Total

100 Personnel Services – Salaries

100 Personnel Services – Salaries

82,380.70

Total Personnel Services – Salaries

\$82,380.70

200 Personnel Services – Employee Benefits

210 Group Insurance – Contracted Provider

20,946.55

220 Social Security Contributions

6,282.18

230 PSERS Retirement Contributions

24,438.52

Total Personnel Services – Employee Benefits

\$51,667.25

Total 2810 Planning, Research, Development and Evaluation Services

\$134,047.95

General Fund (10)

2900 Other Support Services

Elementary

Secondary

Federal

Total

200 Personnel Services – Employee Benefits

210 Group Insurance – Contracted Provider

28,790.23

Total Personnel Services – Employee Benefits

\$28,790.23

500 Other Purchased Services

595 IU Payments By Withholding

156,622.47

Total Other Purchased Services

\$156,622.47

Total 2900 Other Support Services

\$185,412.70

General Fund (10)

2910 Support Services Not Listed Elsewhere In the 2000 Series

Elementary

Secondary

Federal

Total

200 Personnel Services – Employee Benefits

210 Group Insurance – Contracted Provider

28,790.23

Total Personnel Services – Employee Benefits

\$28,790.23

500 Other Purchased Services

595 IU Payments By Withholding

156,622.47

Total Other Purchased Services

\$156,622.47

Total 2910 Support Services Not Listed Elsewhere In the 2000 Series

\$185,412.70

General Fund (10)

3000 Operation of Non-Instructional Services	<u>Total</u>
100 Personnel Services – Salaries	
100 Personnel Services – Salaries	252,594.08
Total Personnel Services – Salaries	\$252,594.08
200 Personnel Services – Employee Benefits	
210 Group Insurance – Contracted Provider	21,137.02
220 Social Security Contributions	19,300.74
230 PSERS Retirement Contributions	49,191.24
Total Personnel Services – Employee Benefits	\$89,629.00
300 Purchased Professional and Technical Services	
329 Professional Educational Services – Other	30,681.00
340 Technical Services	33,752.50
Total Purchased Professional and Technical Services	\$64,433.50
400 Purchased Property Services	
430 Repairs and Maintenance Services	4,589.48
Total Purchased Property Services	\$4,589.48
500 Other Purchased Services	
510 Student Transportation Services	66,214.05
520 Insurance – General	15,199.00
549 Other Advertising/Public Relations	871.00
550 Printing and Binding	286.65
580 Travel	26,704.23
Total Other Purchased Services	\$109,274.93
600 Supplies	
610 General Supplies	87,098.97
630 Food	2,974.00
Total Supplies	\$90,072.97
700 Property	
752 Capital Equipment – Original and Additional	12,101.00
762 Capitalized Equipment - Replacement	4,099.00
Total Property	\$16,200.00
800 Other Objects	
810 Dues and Fees	15,483.98
Total Other Objects	\$15,483.98
Total 3000 Operation of Non-Instructional Services	\$642,277.94

General Fund (10)

3200 Student Activities

	<u>Elementary</u>	<u>Secondary</u>	<u>Federal</u>	<u>Total</u>
100 Personnel Services – Salaries				
100 Personnel Services – Salaries				251,779.08
Total Personnel Services – Salaries				\$251,779.08
200 Personnel Services – Employee Benefits				
210 Group Insurance – Contracted Provider				21,137.02
220 Social Security Contributions				19,238.39
230 PSERS Retirement Contributions				49,191.24
Total Personnel Services – Employee Benefits				\$89,566.65
300 Purchased Professional and Technical Services				
329 Professional Educational Services – Other				30,681.00
340 Technical Services				33,752.50
Total Purchased Professional and Technical Services				\$64,433.50
400 Purchased Property Services				
430 Repairs and Maintenance Services				4,589.48
Total Purchased Property Services				\$4,589.48
500 Other Purchased Services				
510 Student Transportation Services				66,214.05
520 Insurance – General				15,199.00
550 Printing and Binding				286.65
580 Travel				26,704.23
Total Other Purchased Services				\$108,403.93
600 Supplies				
610 General Supplies				87,098.97
630 Food				2,974.00
Total Supplies				\$90,072.97
700 Property				
752 Capital Equipment – Original and Additional				12,101.00
762 Capitalized Equipment - Replacement				4,099.00
Total Property				\$16,200.00
800 Other Objects				
810 Dues and Fees				15,483.98
Total Other Objects				\$15,483.98
Total 3200 Student Activities				\$640,529.59

General Fund (10)

3300 Community Services

Elementary

Secondary

Federal

Total

100 Personnel Services – Salaries

100 Personnel Services – Salaries

815.00

Total Personnel Services – Salaries

\$815.00

200 Personnel Services – Employee Benefits

220 Social Security Contributions

62.35

Total Personnel Services – Employee Benefits

\$62.35

500 Other Purchased Services

549 Other Advertising/Public Relations

871.00

Total Other Purchased Services

\$871.00

Total 3300 Community Services

\$1,748.35

General Fund (10)

5000 Other Expenditures and Financing Uses

Total

800 Other Objects

830 Interest 283,760.50

Total Other Objects \$283,760.50

900 Other Uses of Funds

910 Redemption of Principal 1,330,000.00

Total Other Uses of Funds \$1,330,000.00

Total 5000 Other Expenditures and Financing Uses \$1,613,760.50

General Fund (10)

	<u>Elementary</u>	<u>Secondary</u>	<u>Federal</u>	<u>Total</u>
5100 Debt Service / Other Expenditures and Financing Uses				
800 Other Objects				
830 Interest				283,760.50
Total Other Objects				\$283,760.50
900 Other Uses of Funds				
910 Redemption of Principal				1,330,000.00
Total Other Uses of Funds				\$1,330,000.00
Total 5100 Debt Service / Other Expenditures and Financing Uses				\$1,613,760.50

General Fund (10)

	<u>Elementary</u>	<u>Secondary</u>	<u>Federal</u>	<u>Total</u>
5110 Debt Service				
800 Other Objects				
830 Interest				283,760.50
Total Other Objects				\$283,760.50
900 Other Uses of Funds				
910 Redemption of Principal				1,330,000.00
Total Other Uses of Funds				\$1,330,000.00
Total 5110 Debt Service				\$1,613,760.50

Other Capital Projects Fund (39)

2000 Support Services

300 Purchased Professional and Technical Services

330 Other Professional Services

Total Purchased Professional and Technical Services

Total 2000 Support Services

Total

12.00

\$12.00

\$12.00

Other Capital Projects Fund (39)

2500 Support Services – Business

Elementary

Secondary

Federal

Total

300 Purchased Professional and Technical Services

330 Other Professional Services

12.00

Total Purchased Professional and Technical Services

\$12.00

Total 2500 Support Services – Business

\$12.00

Other Capital Projects Fund (39)

2510 Fiscal Services

Elementary

Secondary

Federal

Total

300 Purchased Professional and Technical Services

330 Other Professional Services

12.00

Total Purchased Professional and Technical Services

\$12.00

Total 2510 Fiscal Services

\$12.00

LEA : 109248003 Saint Marys Area SD

Printed 12/14/2017 10:50:01 AM

Other Capital Projects Fund (39)

2515 Financial Accounting Services

Elementary

Secondary

Federal

Total

300 Purchased Professional and Technical Services

330 Other Professional Services

12.00

Total Purchased Professional and Technical Services

\$12.00

Total 2515 Financial Accounting Services

\$12.00

Other Capital Projects Fund (39)

4000 Facilities Acquisition, Construction and Improvement Services

Total

300 Purchased Professional and Technical Services

330 Other Professional Services 156,478.88

Total Purchased Professional and Technical Services

\$156,478.88

400 Purchased Property Services

450 Construction Services 1,383,975.61

Total Purchased Property Services

\$1,383,975.61

700 Property

752 Capital Equipment – Original and Additional 82,919.42

762 Capitalized Equipment - Replacement 255,827.55

Total Property

\$338,746.97

Total 4000 Facilities Acquisition, Construction and Improvement Services

\$1,879,201.46

Other Capital Projects Fund (39)

4600 Existing Building Improvement Services

Elementary

Secondary

Federal

Total

300 Purchased Professional and Technical Services

330 Other Professional Services

156,478.88

Total Purchased Professional and Technical Services

\$156,478.88

400 Purchased Property Services

450 Construction Services

1,383,975.61

Total Purchased Property Services

\$1,383,975.61

700 Property

752 Capital Equipment – Original and Additional

82,919.42

762 Capitalized Equipment - Replacement

255,827.55

Total Property

\$338,746.97

Total 4600 Existing Building Improvement Services

\$1,879,201.46

	<u>General Fund(10)</u>	<u>Public Purpose Trust(27)</u>	<u>Other Compt Approved (28)</u>	<u>Athletic / Activity(29)</u>	<u>Capital Reserve (690. 1850)(31)</u>
1000 Instruction					
1100 Regular Programs - Elementary / Secondary	11,175,302.41				
1200 Special Programs - Elementary / Secondary	3,538,722.50				
1300 Vocational Education	723,064.56				
1400 Other Instructional Programs - Elementary / Secondary	116,560.84				
1500 Nonpublic School Programs	49,423.05				
1800 Pre-Kindergarten	125.27				
Total Instruction	\$15,603,198.63				
2000 Support Services					
2100 Support Services - Students	872,972.97				
2200 Support Services - Instructional Staff	1,338,335.11				
2300 Support Services - Administration	2,170,687.52				
2400 Support Services - Pupil Health	434,704.44				
2500 Support Services - Business	438,451.94				
2600 Operation and Maintenance of Plant Services	2,239,093.26				
2700 Student Transportation Services	1,761,153.44				
2800 Support Services - Central	134,047.95				
2900 Other Support Services	185,412.70				
Total Support Services	\$9,574,859.33				
3000 Operation of Non-Instructional Services					
3200 Student Activities	640,529.59				
3300 Community Services	1,748.35				
Total Operation of Non-Instructional Services	\$642,277.94				
4000 Facilities Acquisition, Construction and Improvement Services					
4600 Existing Building Improvement Services					
Total Facilities Acquisition, Construction and Improvement Services					
5000 Other Expenditures and Financing Uses					
5100 Debt Service / Other Expenditures and Financing Uses	1,613,760.50				
Total Other Expenditures and Financing Uses	\$1,613,760.50				
TOTAL ACTUAL EXPENDITURES & OTHER FINANCING USES	\$27,434,096.40				

LEA : 109248003 Saint Marys Area SD

Printed 12/14/2017 10:50:07 AM

	<u>Capital Reserve (1431)(32)</u>	<u>Other Capital Projects Fund(39)</u>	<u>Debt Service(40)</u>	<u>Permanent(90)</u>	<u>Total</u>
1000 Instruction					
1100 Regular Programs - Elementary / Secondary					11,175,302.41
1200 Special Programs - Elementary / Secondary					3,538,722.50
1300 Vocational Education					723,064.56
1400 Other Instructional Programs - Elementary / Secondary					116,560.84
1500 Nonpublic School Programs					49,423.05
1800 Pre-Kindergarten					125.27
Total Instruction					\$15,603,198.63
2000 Support Services					
2100 Support Services - Students					872,972.97
2200 Support Services - Instructional Staff					1,338,335.11
2300 Support Services - Administration					2,170,687.52
2400 Support Services - Pupil Health					434,704.44
2500 Support Services - Business		12.00			438,463.94
2600 Operation and Maintenance of Plant Services					2,239,093.26
2700 Student Transportation Services					1,761,153.44
2800 Support Services - Central					134,047.95
2900 Other Support Services					185,412.70
Total Support Services		\$12.00			\$9,574,871.33
3000 Operation of Non-Instructional Services					
3200 Student Activities					640,529.59
3300 Community Services					1,748.35
Total Operation of Non-Instructional Services					\$642,277.94
4000 Facilities Acquisition, Construction and Improvement Services					
4600 Existing Building Improvement Services			1,879,201.46		1,879,201.46
Total Facilities Acquisition, Construction and Improvement Services			\$1,879,201.46		\$1,879,201.46
5000 Other Expenditures and Financing Uses					
5100 Debt Service / Other Expenditures and Financing Uses					1,613,760.50
Total Other Expenditures and Financing Uses					\$1,613,760.50
TOTAL ACTUAL EXPENDITURES & OTHER FINANCING USES		\$1,879,213.46			\$29,313,309.86

LEA : 109248003 Saint Marys Area SD

Printed 12/14/2017 10:50:11 AM

PSERS Salary Data (Salary Data should relate to the General Fund only)

Amount Description	Amount
Total Salary Base for salaries subject to PSERS withholding	11,272,527.12
Total Federally Funded salaries subject to PSERS withholding	704,730.60
	<hr/>

Title I Expenditure Data

Amount Description	Amount
Expenditures Funded with Current Title I Funds	306,283.46
Expenditures Funded with Carry over Title I Funds	17,251.36
	<hr/>
Total Title I Expenditure Data	\$323,534.82
	<hr/>

Title I ARRA Amount

Amount Description	Amount
Portion of Total Title I Expenditures funded with ARRA Title I	<hr/>

Benefits for Staff Relative to Collective Bargaining Agreements

	OBJECT	COVERED	NOT COVERED	TOTAL
10 General Fund	No Self Insurance data to report			
	211 Medical Insurance	2,700,299.74	99,922.50	2,800,222.24
	212 Dental Insurance	61,584.64	8,483.72	70,068.36
	215 Eye Care Insurance			
	216 Prescription Insurance	201,527.38		201,527.38
	271 Self-Insurance Medical Benefits			
	272 Self-Insurance Dental Benefits			
	275 Self-Insurance Eye Care Benefits			
	276 Self-Insurance Prescription Benefits			
	FUND TOTAL		\$2,963,411.76	\$108,406.22
50 Enterprise Fund	No Self Insurance data to report			
	211 Medical Insurance			
	212 Dental Insurance			
	215 Eye Care Insurance			
	216 Prescription Insurance			
	271 Self-Insurance Medical Benefits			
	272 Self-Insurance Dental Benefits			
	275 Self-Insurance Eye Care Benefits			
	276 Self-Insurance Prescription Benefits			
	FUND TOTAL			
60 Internal Service Fund	No Self Insurance data to report			
	211 Medical Insurance			
	212 Dental Insurance			
	215 Eye Care Insurance			
	216 Prescription Insurance			
	271 Self-Insurance Medical Benefits			
	272 Self-Insurance Dental Benefits			
	275 Self-Insurance Eye Care Benefits			
	276 Self-Insurance Prescription Benefits			
	FUND TOTAL			
Total of All Funds		\$2,963,411.76	\$108,406.22	\$3,071,817.98

LEA : 109248003 Saint Marys Area SD

Printed 12/14/2017 10:50:12 AM

Function	Special Education (Prior Year)	Nonspecial Education (Prior Year)	Total (Prior Year)	Special Education (Current Year)	Nonspecial Education (Current Year)	Total (Current Year)
2120 Guidance Services	30,211.22	574,013.17	604,224.39	32,099.13	609,883.51	641,982.64
2140 Psychological Services	130,874.73	14,541.64	145,416.37	140,380.23	15,597.81	155,978.04
2150 Speech Pathology and Audiology Services						
2160 Social Work Services				25,022.25	30,582.74	55,604.99
2260 Instruction and Curriculum Development Services	221,002.56		221,002.56	227,687.72	263,478.61	491,166.33
2350 Legal and Accounting Services		13,250.00	13,250.00	15,699.79	10,329.32	26,029.11
2420 Medical Services					2,357.27	2,357.27
2440 Nursing Services	11,512.08	218,729.48	230,241.56	13,423.45	335,045.46	348,468.91
2700 Student Transportation Services	400,691.27	1,281,958.56	1,682,649.83	256,795.45	1,504,357.99	1,761,153.44
Total	\$794,291.86	\$2,102,492.85	\$2,896,784.71	\$711,108.02	\$2,771,632.71	\$3,482,740.73

(PRINCIPAL AMOUNTS ONLY)

GOVERNMENTAL FUNDS/ ACTIVITIES

	Short-Term Borrowing	General Obligation Bonds/Notes	Authority Building Obligations	Other Long-Term Debt	Other Post-Employment Benefits (OPEB)	Compensated Absences	Net Pension Liability	Total
1. Debt at Beginning of Fiscal Year		13,385,000.00			62,619.00	433,472.64	35,778,000.00	49,659,091.64
2. Additional Debt Incurred During Year					123,061.00	77,563.23	5,998,000.00	6,198,624.23
3. Retirements and Repayments		1,330,000.00						1,330,000.00
4. Debt at End of Fiscal Year		12,055,000.00			185,680.00	511,035.87	41,776,000.00	54,527,715.87
5. Accreted Interest at End Of Fiscal Year								
6. Total Debt and Accreted Interest		12,055,000.00			185,680.00	511,035.87	41,776,000.00	54,527,715.87
7. Current Portion P&I - Due within 1 year		1,609,570.50						1,609,570.50
8. Interest Paid during current fiscal year		283,760.50						283,760.50

(PRINCIPAL AMOUNTS ONLY)

PROPRIETARY FUNDS

- 1. Debt at Beginning of Fiscal Year
- 2. Additional Debt Incurred During Year
- 3. Retirements and Repayments
- 4. Debt at End of Fiscal Year
- 5. Accreted Interest at End Of Fiscal Year
- 6. Total Debt and Accreted Interest
- 7. Current Portion P&I - Due within 1 year
- 8. Interest Paid during current fiscal year

Total Principal and Interest Payments Made by Your School - All Funds

Function	Fund		Principal (910)	Principal (920)	Interest (830)	Total (Principal +Interest)	Misc Other Uses (990)
5110	10	General Fund	1,330,000.00		283,760.50	1,613,760.50	
5110	20	Special Revenue Funds					
5110	30	Capital Projects Funds					
5110	40	Debt Service Fund					
5110	90	Permanent Fund					
5120	10	General Fund					
5120	20	Special Revenue Funds					
5120	30	Capital Projects Funds					
5120	40	Debt Service Fund					

Total Debt Payments - Governmental Funds			\$1,330,000.00		\$283,760.50	\$1,613,760.50	
---	--	--	-----------------------	--	---------------------	-----------------------	--

Function	Fund		Principal (910)	Principal (920)	Interest (830)	Total (Principal +Interest)
5110	50	Enterprise Fund				
5110	60	Internal Service Fund				
5120	50	Enterprise Fund				
5120	60	Internal Service Fund				

Total Debt Payments - Proprietary Funds						
--	--	--	--	--	--	--

Debt Details
Governmental Funds/ Activities

Debt Category	Debt Issue Date (MM/YYYY)	Principal Amounts Only				Current Portion Due Within One Year (Principal and Interest)	Interest Paid During Fiscal Year
		Debt at Beginning of Fiscal Year	Additions	Reductions / Repayments	Debt at End of Fiscal Year		
General Obligation Bonds/Notes – CIB	05/2015	13,385,000.00		1,330,000.00	12,055,000.00	1,609,570.50	283,760.50
Compensated Absences		433,472.64	77,563.23		511,035.87		
Other Post-Employment Benefits (OPEB)		62,619.00	123,061.00		185,680.00		
Net Pension Liability		35,778,000.00	5,998,000.00		41,776,000.00		
Totals for Debt Entered:		\$49,659,091.64	\$6,198,624.23	\$1,330,000.00	\$54,527,715.87	\$1,609,570.50	\$283,760.50

General Fund (10)

Section 1: Tuition/Purchased Services as Reported within Expenditure Detail

	Amount
Tuition Reported in General Fund Expenditures 1000-560	615,159.54
Purchased Services in General Fund Expenditures 1000-594 and 1000-597	

Section 1 Total	\$615,159.54
------------------------	---------------------

Section 2: Tuition Paid to Institution Types During Fiscal Year

	Tuition Paid For Nonspecial Education	Tuition Paid For Special Education	Total
1 1306 Institutions			
2 Institutionalized Children's Programs			
3 Juveniles Incarcerated in Adult Facilities			
4 Residential Treatment Facilities	19,049.00	6,055.24	25,104.24
5 Other Local Education Agencies	16,633.45		16,633.45
6 Brick and Mortar Charter Schools			
7 Cyber Charter Schools	202,538.09	53,609.61	256,147.70
8 Career and Technology Centers			
9 Approved Private Schools		183,849.08	183,849.08
10 PA Chartered Schools for the Deaf and Blind		119,760.94	119,760.94
11 Private Residential Rehabilitative Institutions			
12 Juvenile Detention Centers	13,664.13		13,664.13
13 Special Program Jointures			
14 Other Tuition Not Included Elsewhere In This Section			

Section 2 Total	\$251,884.67	\$363,274.87	\$615,159.54
------------------------	---------------------	---------------------	---------------------