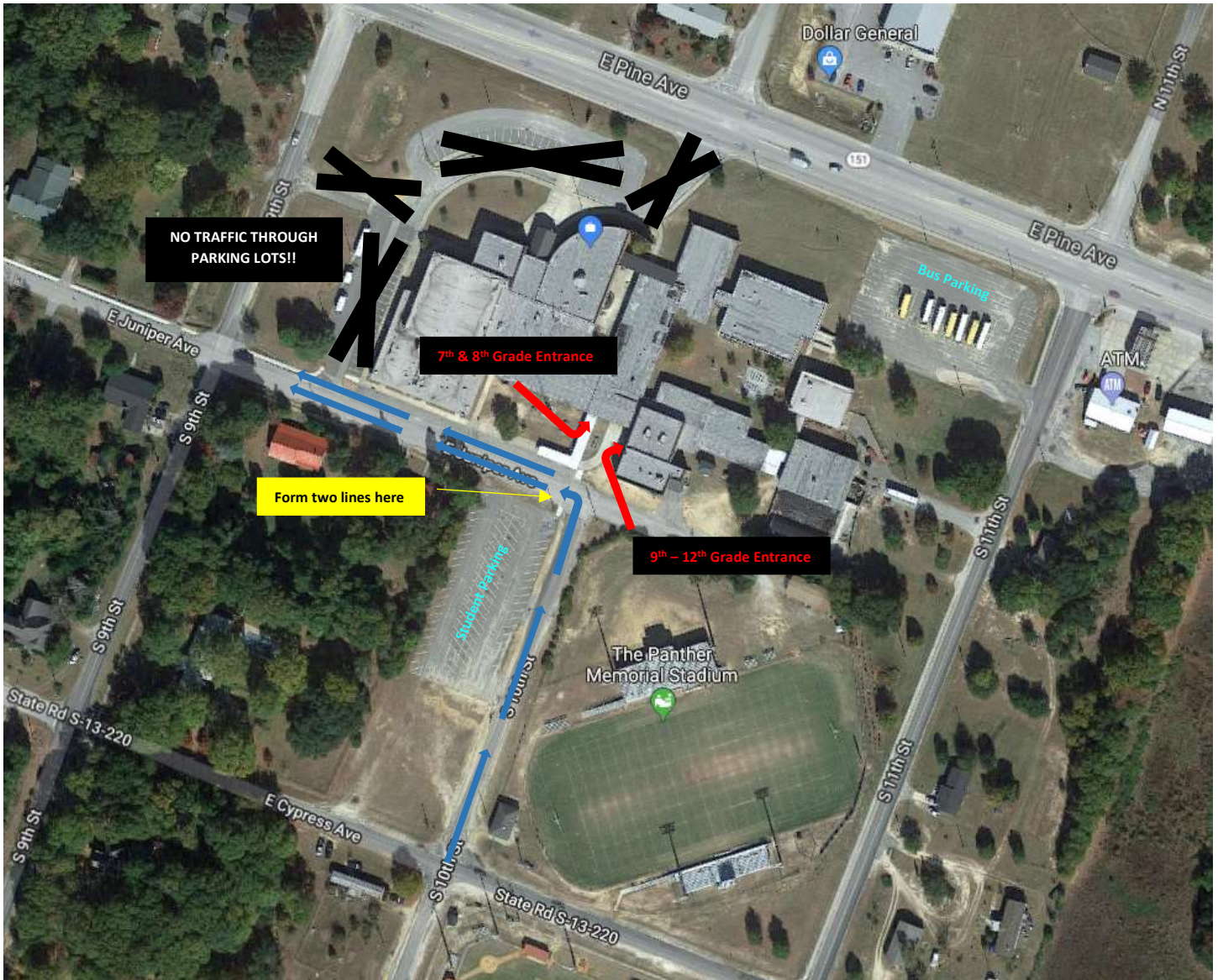




# McBee High School

Arrival/Departure Procedures

2018 - 2019



## Morning

- 1) All students and drop-off drivers enter campus on 10<sup>th</sup> Street.
- 2) Student driver enter student parking; drop off continues to Juniper Avenue. Turn onto Juniper on signal from school personnel.
- 3) Turn onto Juniper Avenue, form two (2) lines for drop off. (Note: this utilizes the emergency lane and 1 thru-traffic lane. This is not a one-way street; accessibility in the opposite direction must remain.)
- 4) At signal from school personnel, merge to one lane and exit rear of the school on Juniper Avenue.

## Afternoon

- 1) Pick-up drivers line up on 10<sup>th</sup> Street. On signal from school personnel, turn onto Juniper Avenue in one (1) line (in the emergency lane).
- 2) Student drivers turn right out of the parking lot and exit on 10<sup>th</sup> Street. DO NOT turn towards the school!