

Musical Symbols & Markings: Music Literacy Worksheet

Notes of the staff



Key Signatures

Sharp Keys (examples)



Rule: Find the last sharp in the key signature (the sharp furthest to the right), and then go up one half step.

Flat Keys (examples)



Rule: Find the second to last flat in the key signature (the second to last one on the right)

C Major



C Major has no sharps or flats

C Major:

F Major

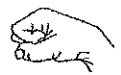


F Major has one flat (B flat), and doesn't follow the Flat Key Rule.

F Major:

Time Signatures

Time signatures appear at the beginning of a piece of music. They are made up of two numbers. The top number indicates the number of beats per measure. The bottom number indicates which note will get one beat



do



ti



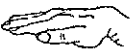
la



so



fa



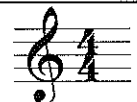
mi



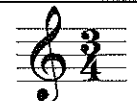
re



do



In $\frac{4}{4}$ there are 4 beats in each measure. A quarter note () = 1 beat.



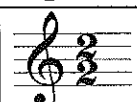
In $\frac{3}{4}$ there are 3 beats in each measure. A quarter note () = 1 beat.



In $\frac{6}{8}$ there are 6 beats in each measure. An eighth note () = 1 beat.



In $\frac{2}{4}$ there are 2 beats in each measure. A quarter note () = 1 beat.













In both $\frac{2}{2}$ and C there are 2 beats in each measure. A half note () = 1 beat.











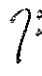
Musical Symbols & Markings: Music Literacy Worksheet



Counting in $\frac{4}{4}$ Common Time

Notes	
	whole note 4 beats 1, (2, 3, 4)
	half note 2 beats 1, (2)
	quarter note 1 beat 1
	eighth note $\frac{1}{2}$ beat (1), te
	sixteenth note $\frac{1}{4}$ beat (1), ta te ta

Rests	
	whole rest 4 beats 1, (2, 3, 4)
	half rest 2 beats 1, (2)
	quarter rest 1 beat 1
	eighth note $\frac{1}{2}$ beat (1), te
	sixteenth note $\frac{1}{4}$ beat (1), ta te ta

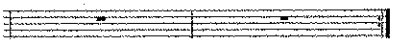
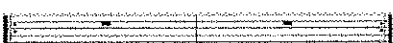
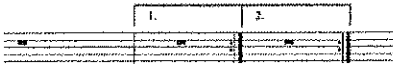
Music Symbols	
	Flat - lowers the pitch by a half step
	Sharp - raises the pitch by a half step
	Natural - cancels out any sharp or flat
	Fermata - Hold the note longer than its normal value
	Marcato - Accented, stressed, short
	Accent - play the note a little louder
	Staccato - play the note short

Clefs	
	Treble Clef
	Bass Clef

Dynamic Markings	
	crescendo - gradually get louder
	decrescendo - gradually get softer
<i>dim.</i>	gradually get softer
<i>cresc.</i>	gradually get louder

Dynamic Markings	
<i>ppp</i>	pianississimo - very, very soft
<i>pp</i>	pianissimo - very soft
<i>p</i>	piano - soft
<i>mp</i>	mezzo piano - moderately soft
<i>mf</i>	mezzo forte - moderately loud
<i>f</i>	forte - loud
<i>ff</i>	fortissimo - very loud
<i>fff</i>	fortississimo - very, very loud

Tempo Marks	
Largo	very slow and broad
Adagio	faster than largo, but slower than andante
Andante	a graceful walking tempo
Moderato	moderately
Allegro	fast
Presto	very Fast
<i>ritardando</i>	gradually becoming slower
<i>accelerando</i>	gradually becoming faster
<i>a tempo</i>	return to the original tempo

Repeat Signs	
D.C. al Fine	Go back to the beginning and end at <i>Fine</i> .
D.C. al Coda	Go back to the beginning and play to the coda sign (⊕), then skip to the Coda and play to the end of the piece.
D.S. al Fine	Go back to the sign () and end at <i>Fine</i> .
D.S. al Coda	Go back to the sign () and play to the coda sign (⊕), then skip to the Coda to end the piece.
	Go back to the beginning and play again.
	Go back to the repeat sign and play again
	Play 1 st ending the first time. Repeat to the beginning, then skip the 1 st ending, and play 2 nd ending.