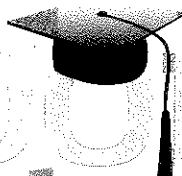




Los Angeles Unified School District

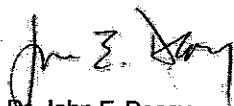
SCHOOL report card



Dear Parent or Guardian,

Our responsibility for educating our children is to work together as a team—the school and district staff, parents, guardians and families, and students themselves. We all need to make our best efforts, individually and as a group, to support our students, believe in their abilities and potential, and create conditions for their success.

The 2010-11 School Report Card, revised with input from various parent and community groups, is a valuable tool for you to learn about your student's school. Bring this document with you when you visit with your student's teacher(s). Learn how your school is working to help your student read, write, think, and speak at or above grade level. Ask questions. Find out how you can help. We are a team, and we need you!


Dr. John E. Deasy
Superintendent

Leslie Lainer
Principal

**LAUSD 3rd graders
scoring proficient or
advanced in English
language arts**



17,806 out of 45,060 students

**LAUSD 3rd graders
scoring proficient or
advanced in math**



30,156 out of 45,102 students

Valley Charter Elementary

API Score 2010-2011 ** Change from 2009-2010 **

- ▶ How many students are at this school? 111
- ▶ What grade levels does this school serve? K-2

PROGRESS

Moving toward learning goals

▶ Are students meeting benchmarks in reading/language arts?

Students in grades K to 3 take tests to measure whether they are at grade level in reading/language arts. These Skills Assessments are part of LAUSD's literacy program and work with the Open Court Reading curriculum.

The following information is based on students' scores on the End-of-Year Kindergarten Assessment.

Kindergarteners who met the benchmarks in ...	2009-10	2010-11	LAUSD Average
High Frequency Words	**%	**%	86%
Lowercase Letters	**%	**%	95%
Uppercase Letters	**%	**%	96%
Rhyming Words	**%	**%	86%

The following information is based on students' scores on the following Grade 1-2 Skills Assessments at the end-of-the-year: Fluency, Reading Comprehension, and Overall Writing.

Students who met the benchmark in Overall Fluency	2009-10	2010-11	LAUSD Average
1st Grade	**%	**%	52%
2nd Grade	**%	**%	52%
Students who met the benchmark in Reading Comprehension	2009-10	2010-11	LAUSD Average
1st Grade	**%	**%	71%
2nd Grade	**%	**%	68%
Students who met the benchmark in Overall Writing	2009-10	2010-11	LAUSD Average
1st Grade	**%	**%	56%
2nd Grade	**%	**%	46%

**Data not shown when the number of students is 10 or less to protect student privacy and ensure statistical accuracy, or when data are not available.

NOTE: API, AYP, and CST scores in the Student Groups section refer to the elementary school your child will attend, not to this primary center.

READINESS

For college or career

▶ Are students ready to move on to the next grade level?

Students in grades 2-11 are tested annually to assess their achievement of state content standards. California Standards Test (CST) scores fall into 1 of 5 performance levels. The state's goal is for all students to score proficient or advanced, the top 2 performance levels.

2nd graders scoring at the proficient or advanced performance level in English language arts

2009-10	2010-11	LAUSD Average
**%	**%	53%

** out of ** students

2nd graders scoring at the proficient or advanced performance level in math

2009-10	2010-11	LAUSD Average
**%	**%	61%

** out of ** students

3rd graders scoring at the proficient or advanced performance level in English language arts

2009-10	2010-11	LAUSD Average
**%	**%	40%

** out of ** students

3rd graders scoring at the proficient or advanced performance level in math

2009-10	2010-11	LAUSD Average
**%	**%	67%

** out of ** students

LEARNING Environment

What it's like to be at this school

► What is the mission of the primary centers?

The goal of the primary centers across LAUSD is to support students and their families in developing a strong foundation of the educational, social, and physical skills that children need to become lifelong learners.

► What is it like to be at this school?

In 2010-11, parents and staff were surveyed about their experiences at this school. Here is what they told us...

Parents:	Number (percent) responding:	** (***)
I feel welcome to participate at this school.		**%
The school offers me opportunities to participate in councils, parent organizations.		**%
I talk with the teacher about my child's schoolwork.		**%
My child is safe on school grounds.		**%
Staff:	Number (percent) responding:	**% (***)
I get the help I need to communicate with parents.		**%
I am proud of this school.		**%
My school is clean.		**%
I feel safe on school grounds.		**%

For more information on the survey results, go to <http://schoolsurvey.lausd.net>

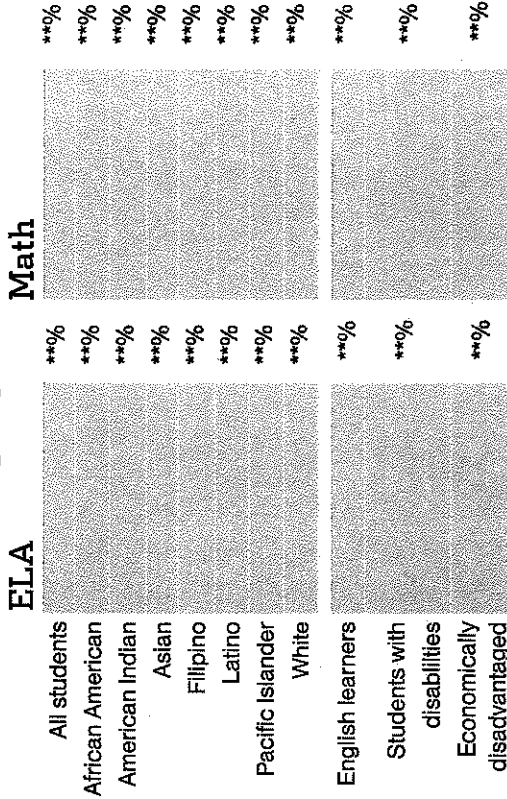
► What are other important things to know about this school?

	2009-10	2010-11	LAUSD Average
Students suspended one or more times	**%	**%	0%
Teachers at this school for at least 3 years	%	%	65%
Staff with 96% or higher attendance*	**%	**%	76%
Students with 96% or higher attendance*	**%	**%	58%
*96% attendance is equal to 7 days absent			
Highly qualified teachers (fully accredited, demonstrate subject area competence)	**%	**%	94%

STUDENT Groups

Performance of different groups

► What percentage of students is scoring proficient or advanced across student groups?*



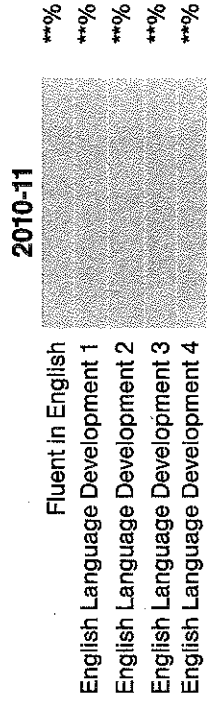
► How are English learners progressing?

All students whose primary home language is not English are given the California English Language Development Test (CELDT) when they enter school.

Students are classified as English learners (ELs) if they do not receive a high enough score to be considered initially fluent in English. ELs are placed into one of five levels to indicate their current level of skill in the English language.

ELs receive support to enable them to do grade-level work in English, and re-take the CELDT to be reclassified as proficient in the English language.

► What are our students' beginning English Language Development (ELD) levels?



*Student performance is defined by AYP criteria.

LEARN more

▶ **Who are the students at this school?**

▶ **Total number of students enrolled:** 111

▶ **Percentage of students enrolled who are...**

African American	2%	Gifted and talented	0%
American Indian	1%	Students with disabilities	9%
Asian	2%	English learners	11%
Filipino	1%	Reclassified fluent	0%
Latino	27%	English proficient	23%
Pacific Islander	0%	Economically disadvantaged	**%
White	68%	Students entering and leaving	

▶ **What is Adequate Yearly Progress (AYP) and Program Improvement (PI) Status?**

A school must meet targets under No Child Left Behind (NCLB) on standardized tests and graduation rates for all students and for certain groups (economically disadvantaged students, students with disabilities, English learners, and students in different ethnic groups). For information on the specific requirements for your school, visit <http://www.cde.ca.gov/ta/aci/ar/> and click on the link called School Level AYP Reports.

Did this school meet AYP requirements? **Yes**
 How many requirements did the school meet? **4**
 ...out of a possible **4**

A Title I school is in **Program Improvement (PI)** status when it does not meet AYP requirements two years in a row. When this happens, an intervention plan is designed to help the school meet its requirements. Parents are notified when a school enters PI status. You may view a copy of your school's plan at your school.

What was the school's PI status as of September 2011? **NA**

GET Involved

▶ **What you can do as a parent....**

As a parent, you play a critical role in your child's success in school. Aside from teachers and counselors, the school principal is someone every parent can talk to at the school. Many schools also have a parent center with additional resources for parents.

Principal of this school: **Leslie Lainer**
 School phone number: **818-810-6713**
 Parent center phone number: **818-810-6713**

▶ **Get involved with your child's school.**

For resources like guidelines on how to help your child succeed in school, how to support your child's school, back to school tips, information about volunteering, school governance, parent centers, and advisory committees, contact:

LAUSD Parent Community Services Branch
(866) 669-7272

www.lausd.net/parent-services

▶ **As a parent of a student in special education, become more informed.**

To access tools like an informational training series for parents of students with disabilities and to learn about resources like the Complaint Response Unit that responds to concerns of parents of students with disabilities, contact:

Division of Special Education
(213) 241-6701
<http://sped.lausd.net>

▶ **Access information on your student's progress.**

To find information on your child's grades, attendance, behavior, etc., contact your school to find out how to get access to the Integrated Student Information System (ISIS) Family Module. You may access the tool at:

<http://family.lausd.net>