



**COLLEGE AND CAREER SPOTLIGHT  
FEATURING:**

**Texas A&M College Station & Chemical  
Engineering**

*Presented by: Career and College Center*

# TEXAS A&M COLLEGE STATION



# TEXAS A&M UNIVERSITY-COLLEGE STATION

## How Do I Apply?

- Submit application through APPLYTEXAS or THE COALITION
- 3 essay topics
- \$75 processing fee
- Official high school transcript
- SAT or ACT scores
- Letter of Recommendation
- Resume

## When to Apply for Fall 2017

- Application opens August 1, 2016
- **Deadline December 1, 2016**



# TEXAS A&M COLLEGE STATION

## Average Cost of Tuition

- \$9,494

## Top 5 Majors

- Business, Management, Marketing, and Related Support Services
- Engineering
- Agriculture and Related Sciences
- Multi/Interdisciplinary Studies
- Biological and Biomedical Sciences



# TEXAS A&M COLLEGE STATION

## Attend an Aggieland Information Day

- Monday, November 21<sup>st</sup>

## Aggie Fun Fact: Pennies On Sully

- Placing pennies at the base of the Sul Ross statue on campus just might give an Aggie the extra luck he or she needs to ace an upcoming exam.

## Mascot

- Reveille is the official mascot of Texas A&M, and she can often be seen on campus in class or attending events.



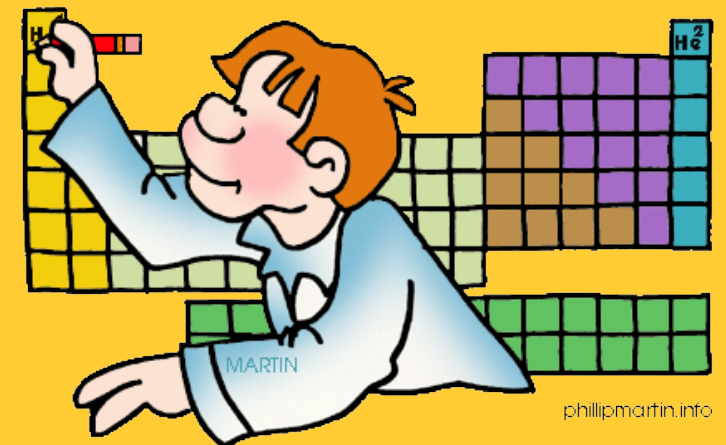
# CHEMICAL ENGINEER



# CHEMICAL ENGINEER

## What is it?

- Chemical engineers apply the principles of chemistry, biology, physics, and math to solve problems that involve the production or use of chemicals, fuel, drugs, food, and many other products.
- They design processes and equipment for large-scale manufacturing, plan and test production methods and byproducts treatment, and direct facility operations.



# CHEMICAL ENGINEER

## Average Salary

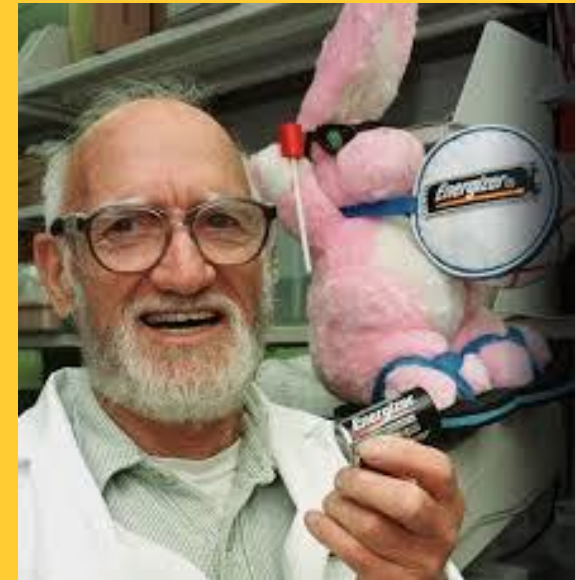
- \$97,360 per year

## Education Needed

- Bachelor's degree in chemical engineering

## Famous Engineer

- Lewis Urry, inventor of the alkaline battery and father to the Energizer Bunny





# CHEMICAL ENGINEER

## Universities offering Chemical Engineering

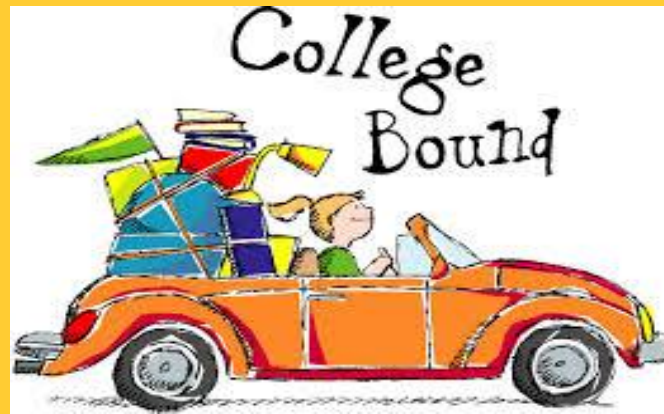
- Texas A&M College Station
- University of Texas at Austin
- Texas A&M University- Kingsville
- University of Houston
- Rice University
- Texas Tech
- Lamar University



# MAKE SENSE OF IT..... TERMS TO KNOW



- **Grade point average:** The average of all of the course grades you have received, on a four-point scale.
- **Major:** Your primary area of study. Your college major is the field you plan to get a job in after you graduate.



# CONTACT INFORMATION

## College and Career Coaches

Victoria East High School

**Ms. Araceli Zubieta**

788-2820 x38652

[araceli.zubieta@visd.net](mailto:araceli.zubieta@visd.net)

Victoria West High School

**Ms. Maria Rico**

788-2830 x39150

[Maria.rico@visd.net](mailto:Maria.rico@visd.net)