

 amdenton R-III
School District

LAKE OF THE OZARKS

Camdenton R-III School District is Fully Accredited Earned Distinction in Performance

Annual District Report

**Camdenton R-III School District
2011-2012**

Pride in Performance



Student Data

Tim Hadfield, Ed.D., Superintendent
Brian Henry, Ed.D., Deputy Superintendent
Roma Lee France, Assistant Superintendent
Jim Rich, Ph.D., Assistant Superintendent

School Year	2008-09	2009-10	2010-11	2011-12	2011-12 Missouri
Enrollment K-12*	4,184	4,139	4,127	4,160	886,366
Rates of Pupil Attendance	94.30%	93.50%	94.00%	93.80%	94.70%
High School Dropout Rate*	5.20%	2.60%	3.50%	2.20%	3.30%
High School Graduation Rate	85.8%	85.9%	85.1%	90.20%	87.80%
ACT					
Camdenton R-III Average Score	22.7	22.9	22.1	22.5	
National Average Score	21.1	21.0	21.1	21.1	
State Average Score	21.6	21.6	21.6	21.6	
Percent of Graduates Taking the ACT	54.3%	61.5%	58.0%	53.6%	66.92%
Staffing Ratios					
Students to Classroom Teachers	19	19	18	18	18
Students to Administrators	196	188	197	198	195
Percent of Students Continuing Education in Post Secondary Programs					
Entering a 4 year College/University	37.60%	33.30%	39.70%	38.7%	36.50%
Entering a 2 year College	22.60%	25.40%	22.70%	22.70%	31.70%
Entering a Post-Secondary (Technical) Institution	1.40%	3.20%	2.10%	3.10%	2.30%
Job Placement for Career-Technical Education Students	87.0%	79.9%	80.0%	82.5%	57.3%
Students Eligible for Free and Reduced Lunch					
Number	1,851	2,083	2,163	2,299	428,889
Percent	45.20%	50.70%	53.00%	55.80%	49.50%
Average Per Pupil Expenditure	\$8,758	\$9,558	\$9,471	\$9,633	\$9,487

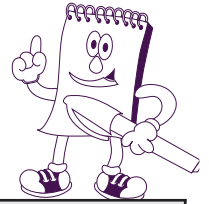
Questions, requests, or disaggregated data information should be directed to the Central Office at (573) 346-9213.

*This data is presented in summary format. Disaggregated data for race, ethnicity, disability, English proficiency, and social economic status can be obtained by accessing the following web site:

<http://mcds.dese.mo.gov/guidedinquiry/School%20Report%20Card/District%20Report%20Card.aspx>

Student Achievement Data*

Each spring, all public schools in the State of Missouri are required to administer the state achievement MAP (Missouri Assessment Program) test. The MAP test is given in the areas of Communication Arts to students in grades three through eight; Math to students in grades three through eight; and Science to students in grades five and eight. End-of-Course testing is offered upon completion of Algebra I, English II, and High School Biology.



Student performance on the MAP is reported in terms of four performance or achievement levels: Advanced, Proficient, Basic, and Below Basic. These scores are a means of comparing test results with standards of academic performance as established by a state panel drawn from education, business, and professional communities.

	Camdenton R-III 2011				Camdenton R-III 2012				Missouri 2012			
Grade Level	Below Basic	Basic	Proficient	Advanced	Below Basic	Basic	Proficient	Advanced	Below Basic	Basic	Proficient	Advanced
Communication Arts												
3	8.3	52.1	25.5	14.1	6.0	52.3	24.7	17.0	7.9	46.0	27.2	18.8
4	6.7	40.4	34.3	18.5	7.4	37.0	33.4	22.2	8.2	38.9	31.2	21.6
5	9.0	42.5	34.6	14.0	6.0	39.7	37.3	17.0	6.9	40.5	32.3	20.3
6	5.2	42.4	32.4	20.1	9.1	39.4	37.7	13.8	7.4	41.7	34.7	16.2
7	5.6	33.2	44.8	16.4	4.6	36.1	40.7	18.5	8.6	35.5	36.6	19.2
8	2.4	42.6	35.0	20.0	2.1	35.6	40.1	22.3	4.3	41.8	34.4	19.5
EOC	2.4	19.6	50.0	28.0	3.8	19.6	53.1	23.4	5.7	21.2	53.5	19.5
Mathematics												
3	2.7	44.3	41.6	11.3	2.7	45.5	41.5	10.3	5.4	42.1	39.8	12.7
4	2.4	46.7	42.4	8.5	4.8	41.5	44.7	9.0	5.7	43.2	40.4	10.8
5	7.3	44.2	32.9	15.6	3.3	40.8	41.4	14.6	5.7	39.3	35.8	19.2
6	3.9	34.0	45.6	16.5	7.8	36.5	41.2	14.5	7.4	36.3	39.7	16.6
7	7.6	28.1	46.5	17.7	4.9	25.5	42.8	26.8	9.8	30.0	40.0	20.1
8	8.5	31.5	36.5	23.5	5.1	27.4	30.5	37.0	14.0	33.3	31.9	20.8
EOC	8.4	26.8	40.0	24.9	6.1	31.7	37.0	25.1	8.9	34.5	35.6	21.1
Science												
5	7.3	33.4	35.8	23.5	5.4	35.8	29.5	29.2	9.8	38.6	27.2	24.4
8	5.0	27.1	43.1	24.8	4.8	23.4	49.3	22.4	16.2	33.9	37.2	12.7
EOC	9.3	45.4	32.0	13.4	5.7	42.4	43.1	8.8	8.2	36.8	41.3	13.7

“Everyone Learning Every Day”

Teacher Data					
Camdenton					
School Year	2008-09	2009-10	2010-11	2011-12	2011-12 Missouri
Average Years of Experience of Professional Staff	14.6	14.5	14.2	14.0	12.4
Advanced Degrees Earned	53.20%	56.80%	56.10%	59.50%	58.80%
Average Regular Term Teachers Salaries	\$42,863	\$43,247	\$43,156	\$43,125	\$45,714
Total Teachers Salaries	\$47,529	\$47,887	\$46,276	\$46,327	\$46,740
Average Administrators Salaries	\$82,447	\$83,773	\$85,255	\$86,328	\$84,800

Rates of Participation	2008-09	2009-10	2010-11	2011-12
Percentage of parents participating in Parent-Teacher Conferences	78.0%	78.0%	70.4%	72.0%
Percentage of students participating in:				
♦Special Education Programs	11.5%	11.3%	10.3%	10.3%
♦Career and Technical Education Programs	54.0%	60.5%	70.7%	68.9%
♦Gifted Programs	8.4%	6.8%	7.2%	7.0%
Percentage of students enrolled in Advanced Placement Classes	4.5%	5.4%	6.7%	5.9%
Percentage of high school graduates taking the College Admissions Test (ACT)	54.3%	61.5%	58.0%	53.6%
Number of students enrolled in Early Childhood Special Education Program	86	70	60	85
Number of families served in Parents as Teachers Program	436	445	237	328

Disciplinary Actions	2011-2012 Camdenton		2011-2012 Missouri	
	Number	Rate	Number	Rate
Type of Removal				
♦Expulsion	0	0.00%	55	0.00%
♦Suspension of 10 or more Consecutive Days	68	1.60%	13,790	1.60%
Enrollment	4,160		886,418	



District Data



The voted tax rate is the maximum amount approved by Camdenton R-III School District voters for school operations (e.g., Incidental, Teacher, Capital Projects Funds). The Debt Service Levy is set by the Board of Education solely for the purpose of retirement of debt. In November, 1998, Missouri voters approved a constitutional amendment which authorizes Boards of Education to set a \$2.75 levy for operations without a vote of school district patrons.

The adjusted tax rate is the actual tax rate levied for a given tax year. For the 2011 tax year, the actual amount levied for Operations was \$2.66. The amount levied for Debt Service was \$.21. The total amount levied was \$2.87.

Voted Tax Rates					Adjusted Tax Rates					Average Missouri Tax Rate
Tax Year	2008	2009	2010	2011	Tax Year	2008	2009	2010	2011	
Camdenton R-III					Camdenton R-III					
Operating	\$2.66	\$2.70	\$2.70	\$2.66	Incidental	\$1.08	\$0.95	\$1.04	\$1.28	\$3.3561
Debt Service	.21	.17	.17	.21	Teachers	1.08	1.21	1.21	1.18	.1498
					Debt Service	.21	.17	.17	.21	.4292
					Capital Projects	.50	.54	.45	.20	.0595
					Total	\$2.87	\$2.87	\$2.87	\$2.87	\$3.9946

Assessed Valuation



The December 31, 2011, assessed valuation for all classes of property as certified by the County Clerks of Camden, Morgan, and Laclede counties was \$1,063,946,309. The breakdown of assessed valuation by class of property is as follows: Real Estate - \$891,540,560 and Personal - \$172,405,749.



Tax Year	2007	2008	2009	2010	2011
Camdenton R-III	\$982,235,251	\$1,025,657,016	\$1,048,519,234	\$1,058,159,546	\$1,063,946,309

Revenue Sources



The school district receives revenues from three major sources. Below you will find the percentage of revenue received from state, federal, and local sources.

School Year	2008-09	2009-10	2010-11	2011-12	Missouri Average
Camdenton R-III					
Local	76.60%	74.70%	74.60%	77.01%	59.01%
State	15.30%	13.10%	14.50%	13.30%	31.76%
Federal	8.20%	12.20%	11.00%	9.67%	10.13%

Camdenton High School Courses and Credits

LANGUAGE ARTS

Language Arts 9A [*W]	1.0
Language Arts 9B	1.0
Language Arts 10A [*W]	1.0
Language Arts 10B	1.0
Language Arts 11A [*W]	1.0
Language Arts 11B	1.0
IB Language Arts A1 [*W]	1.0
IB Language Arts A2 [*W]	1.0
Forensics (teacher permission)	1.0
Speech	.50
Debate: Policy [*W]	1.0
Debate: Lincoln-Douglas/Public Forum [*W]	1.0
Grammar [*W]	1.0
Eng 101 - Composition [*W]	.50
Eng 102 - Composition [*W]	.50
Sphtr. 101 - Public Speaking [*W]	.50
IB Theory of Knowledge [*W]	.50
English Literature [*W] [AP]	1.0
Creative Writing	.50
21st Century Communications	.50
Communications	.50
Literature and Other Readings	.50
Mass Media [*W] (teacher permission)	1.0-2.0
Poetry	.50

FOREIGN LANGUAGE

French I [*W]	1.0
French IA [*W]	1.0
French II [*W]	1.0
French IIA [*W]	1.0
French III [*W]	1.0
IB French III [*W]	1.0
French IV [*W]	1.0
IB French IV [*W]	1.0
Spanish I [*W]	1.0
Spanish IA [*W]	1.0
Spanish II [*W]	1.0
Spanish IIA [*W]	1.0
Spanish III [*W]	1.0
IB Spanish III [*W]	1.0
IB Spanish/SL [*W]	1.0
Spanish IV [*W]	1.0
IB Spanish IV [*W]	1.0

SOCIAL STUDIES

World History/Geography	1.0
World History/Geography A [*W]	1.0
American History	1.0
IB History of the Americas I [*W]	1.0
IB History of the Americas II [*W]	1.0
AP U.S. Government and Politics [*W]	1.0
Government	1.0
Government A [*W]	1.0
Hist. 101 U.S. Hist. Pre-1877 [*W]	.50
Human 108 - World Civilization [*W]	.50
International Relations	.50
Law and You	.50
Psychology	.50
Psy 101 General Psych [*W]	.50
AP Psychology [*W]	1.0
IB Psychology [*W]	1.0

FINE ARTS - ART - DRAMA - MUSIC

Art	1.0
Drawing I	.50
Drawing II	.50
Painting I	.50
Painting II	.50
Ceramics I	.50
Ceramics II	.50
Portfolio Art (placed by instructor)	.50
IB Visual Arts [*W]	1.0
Acting I	.50
Acting II	.50
Theatre Arts: Lighting and Sound	.50
Theatre Arts: Scenery and Design	.50
Sphtr 107 - Intro to Theater [*W]	1.0
Concert Band	1.0
Symphonic Band	1.0
IB Band [*W]	1.0
Bel Cantos (audition only)	1.0
Choir (audition only - Men's and Women's)	1.0
IB Music	1.0
Music Theory	.50

MATHEMATICS

Pre-Algebra	1.0
Algebra I	1.0
Algebra IA [*W]	1.0
Algebra II [*W]	1.0
Accelerated Algebra IIA [*W]	1.0
Geometry [*W]	1.0
Geometry A [*W]	1.0
Statistics [*W]	.50
Trigonometry [*W]	.50
IB Math Studies I [*W]	1.0
IB Math Studies II [*W]	1.0
IB Math I [*W]	1.0
IB Math I-II [*W]	1.0
IB Math HL	1.0
Pre-Calculus [*W]	1.0
Calculus [*W] [AP]	1.0
Consumer Math A	1.0
Consumer Math B	1.0
Java I	.50
Java II [*W]	.50
Math 115 - College Algebra [*W]	.50

Dual Enrollment [*W]

High School / College

Bio. 112 - General Biology	1.0
Eng. 101 - Composition	.50
Eng. 102 - Composition	.50
Hist. 101 - U.S. History Pre-1877	.50
Human 108 - World Civilization	.50
Math 115 - College Algebra	.50
Psych. 101 - General Psychology	.50
Sphtr. 101 - Public Speaking	.50
Sphtr. 107 - Intro. to Theater	.50

SPECIAL CATEGORY CLASSES

Strategies for Literacy	1.0
Yearbook (permission only)	1.0
Library Science	.50
Computer Assisted Studies	.50
Individual Investigations	.50

SCIENCE

Anatomy and Physiology	1.0
Astronomy and Meteorology	1.0
Pre Chemistry / Physics	1.0
IB Environmental Systems I [*W]	1.0
Principles of Biology	1.0
Chemistry (Lab) [*W] [AP]	2.0
Chemistry of the Environment	1.0
Bio. 112 - General Bio. (Lab) [*W]	1.0
IB Chemistry I [*W]	1.0
Physics (Lab) [*W]	1.0
IB Physics I [*W]	1.0
IB Physics II [*W]	1.0
Biology (Lab) [*W] [AP]	1.0
Science Research [*W] (teacher permission)	1.0
IB Biology I [*W]	1.0
IB Biology II [*W]	1.0
Marine Biology	1.0
Zoology	.50
Freshwater Ecology	.50
Forensic Science	.50

PHYSICAL EDUCATION

Health (required for 9th grade)	.50
Physical Education (full year required)	.50
Weight Training	.50
Fitness for Life (females only)	.50
Lifetime Activities	.50

PRACTICAL ART - BUSINESS

Accounting I	1.0
Accounting II [*W]	1.0
Advanced Personal Finance [*W]	.50
Business Law	.50
Business Technology	1.0
Cooperative Education	2.0
Entrepreneurship	1.0
Foundations of Education	1.0
Introduction to Marketing	1.0
Personal Finance	.50
Sports and Entertainment Marketing	.50
Microcomputer: Docs and Presentation	.50
Microcomputer: Spreadsheet & Integration	.50
Web Page Design I	.50
Web Page Design II	.50

FAMILY & CONSUMER SCIENCE

Intro. to FACS	.50
Clothing and Costume	.50
Advanced Clothing Construction	.50
Family Relations	.50
Child Development	.50
Parenting	.50
Housing and Interior Design	.50
Nutrition	.50

INDUSTRIAL TECHNOLOGY

Principles of Engineering [*W]	1.0
Introduction to Engineering Design [*W]	1.0
Mechanical Drafting	1.0
Computer Graphics	1.0
Digital Electronics [*W]	1.0
Home Maintenance	.50

Lake Career & Technical Center Courses and Credits

LCTC - Developing Skills for a Lifetime

Ag power & Construction	2.0	Introduction to Agriculture	1.0
Animal Science	2.0	Introduction to Health Care	.50
Automotive Technology	3.0	Introduction to Teaching	.50
Building Trades	3.0	Livestock Operations and Mgmt.	2.0
Collision Repair & Customization Basics	2.0	Marine Power & Extreme Sports Tech.	3.0
Collision Repair Technology	3.0	Medical Technology-The Human Body	2.0
Computer Repair and Networking	2.0	Metal Fabrication	3.0
Culinary Arts	3.0	Power Sports Technology	2.0
Culinary Careers	.50	Pro-Auto Maintenance (Intro.)	.50
Digital Imaging	2.0	Restaurant Skills	2.0
Digital Video	1.0	Smart Tech./Tech. Mech.	2.0
Foundations of Education	1.0	Super Tech. II	2.0
Game Design	1.0	Teacher Education	2.0
Graphics	2.0	Transportation Careers	.50
Greenhouse Production	2.0	Turf & Landscape Management	2.0
Health Occupations I	3.0	Woods Technology	1.0
Health Occupations II/Clinical Experience	3.0	Woodworking and Cabinetmaking	2.0

Camdenton Middle School Courses 2011-12

7th Grade Courses

Communication Arts
 Social Studies
 Science
 Math I
 Pre-Algebra
 Physical Education / Health
 Art I
 Computers I
 Family Consumer Science
 Strength and Conditioning I
 Technology I
 Video Communications
 Laker Chorale
 Beginning Band
 (Woodwinds - Brass - Percussion)

8th Grade Courses

Communication Arts
 American History
 Science
 Math II
 Algebra I
 Physical Education / Health
 Art II
 Computer Applications II
 Drama
 Family Consumer Science II
 Industrial Technology
 Strength and Conditioning II
 Technology II
 Video Production
 Laker Chorale
 Beginning Woodwinds
 Beginning Brass
 Middle School Band

Additional Courses Offered for Capstone Students

7th Grade Accelerated Courses

Communication Arts
 Social Studies
 Science
 French
 Spanish

8th Grade Accelerated Courses

American History
 Communication Arts
 Science
 French
 Spanish

