



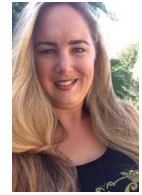
# Esperanza High School PTSA



We invite every parent, teacher, student and community member to join with PTSA, as we work to make Esperanza High School the best it can be for our students.



Gina Aguilar  
Principal  
gaguilar@pylud.org



Stacie Thomas  
PTSA President  
staciedthomas@gmail.com

Membership Chair: Leslie Kimura  
philfour7@yahoo.com

## Your Esperanza PTSA membership supports the following programs:

- Aztec University
  - Mock SAT/ACT Testing
  - Career Day
  - Student leadership training
  - Creative Arts/Reflections Program
  - Staff Appreciation luncheons
  - Aztec Pride Day (school grounds clean-up day)
  - Honorary Service Awards
  - Distinguished Aztec Academic Recognition (DAAR)
  - Student of the Month Recognition
  - Scholarships
- And more!



EHS Sweat-shirts Available at Registration. \$35 for small, medium, large or Xlarge

## How to join Esperanza PTSA

- **Standard Membership** - \$16 Receives 1 PTSA membership and various offers from local merchants, including Chick-fil-A.
- **Warrior Membership** - \$60 Receives 2 PTSA membership and various offers from local merchants, including Chick-fil-A.
- **Aztec Membership** - \$120 Receives 3 PTSA memberships, an Esperanza sticker and various offers from local merchants, including Chick-fil-A.
- **Cardinal Membership** - \$175 Receives 3 PTSA memberships, an Esperanza sticker and various offers from local merchants, including Chick-fil-A, and 1 Esperanza sweatshirt (pictured above).

Deliver sweatshirt to student: \_\_\_\_\_ Small Medium Large XLarge

- **Gold Membership** - \$250 Receives 4 PTSA memberships, an Esperanza sticker and an Esperanza magnet, various offers from local merchants, including Chick-fil-A, and 2 Esperanza sweatshirt (pictured above).

Deliver sweatshirt to student: \_\_\_\_\_ Small Medium Large XLarge

### **YES! I would like to be an Esperanza High School PTSA Member:**

- Complete a membership envelope or sign up using PayPal (credit or debit accepted) on the school website [www.esperanzahs.net](http://www.esperanzahs.net), click Parents and then PTSA. If using envelope, turn in during registration or to the school office.
- List all members on envelope or online order.
- Checks payable to EHS PTSA and all donations are tax-deductible.



## PTSA Volunteer Opportunities

Calling all Esperanza Aztec parents & community members to join our award-winning PTSA team!



Interested in volunteering for more than *one* event, have a little additional time to dedicate to your child's school; how about a Board position? Please feel free to contact our president Stacie Thomas today via email at [staciedthomas@gmail.com](mailto:staciedthomas@gmail.com) and she can answer any questions you may have. We'd love to have you join the fantastic Esperanza Aztec PTSA Team!

You can also go online to [www.esperanzahs.net](http://www.esperanzahs.net), click on parents, click on PTSA, and then click on "Volunteer Opportunities" for current open positions.

\_\_\_\_\_ **Hospitality** (baked goods, beverages, monetary donations/gift cards, Back to School, Holiday, Staff Appreciation Day, etc.)

\_\_\_\_\_ **Fundraising** helping organize various events throughout the school year

\_\_\_\_\_ **Chaperone** for school dances

\_\_\_\_\_ **Office assistance** (substitute for front desk & attendance office during secretary appreciation days, special meetings, etc.)

\_\_\_\_\_ **Test proctor** (help proctor the 10th grade exit exam – CAHSEE)

\_\_\_\_\_ **Reflections and Creative Arts Awards** programs

\_\_\_\_\_ **Aztec Pride Day** planning, assisting with Esperanza High School campus cleanup/touch up day.

\_\_\_\_\_ **"DAAR"** assistance with planning *"Distinguished Aztec Academic Recognition"*

\_\_\_\_\_ Help with other school events/programs, as needed

\_\_\_\_\_ Please include my email address for distribution on information related to Esperanza.

Parent Name(s) \_\_\_\_\_

E-mail \_\_\_\_\_

Home phone \_\_\_\_\_ Cell phone \_\_\_\_\_

Student Name(s) \_\_\_\_\_ Grade(s) \_\_\_\_\_

Your name, phone number, and email address will be given to the people responsible for these areas

Membership questions please contact Leslie Kimura at [philfour7@yahoo.com](mailto:philfour7@yahoo.com)

Esperanza High School PTSA  
1830 N Kellogg Ave, Anaheim CA 92807 - [www.esperanzahs.com](http://www.esperanzahs.com), click Parents, click PTSA