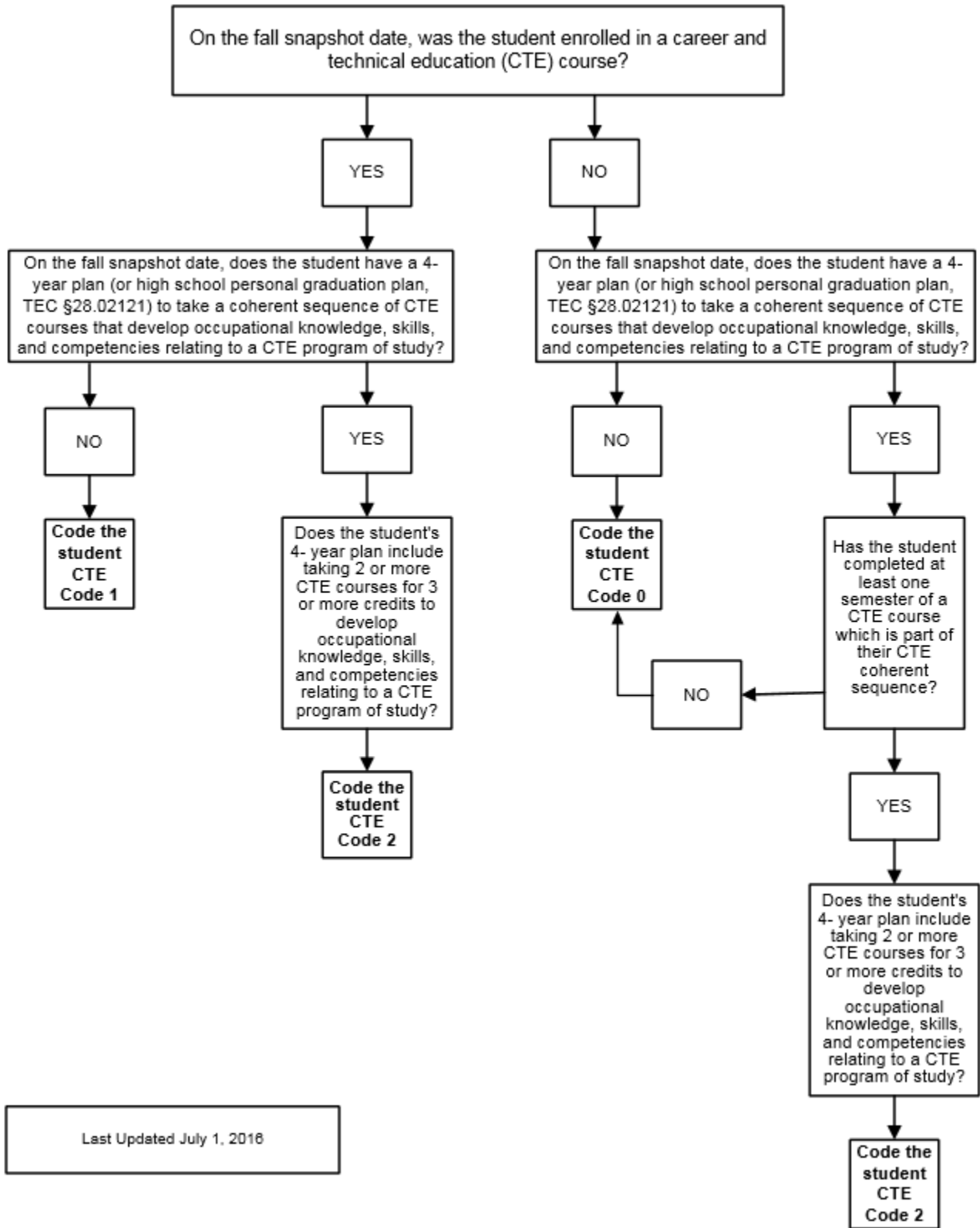
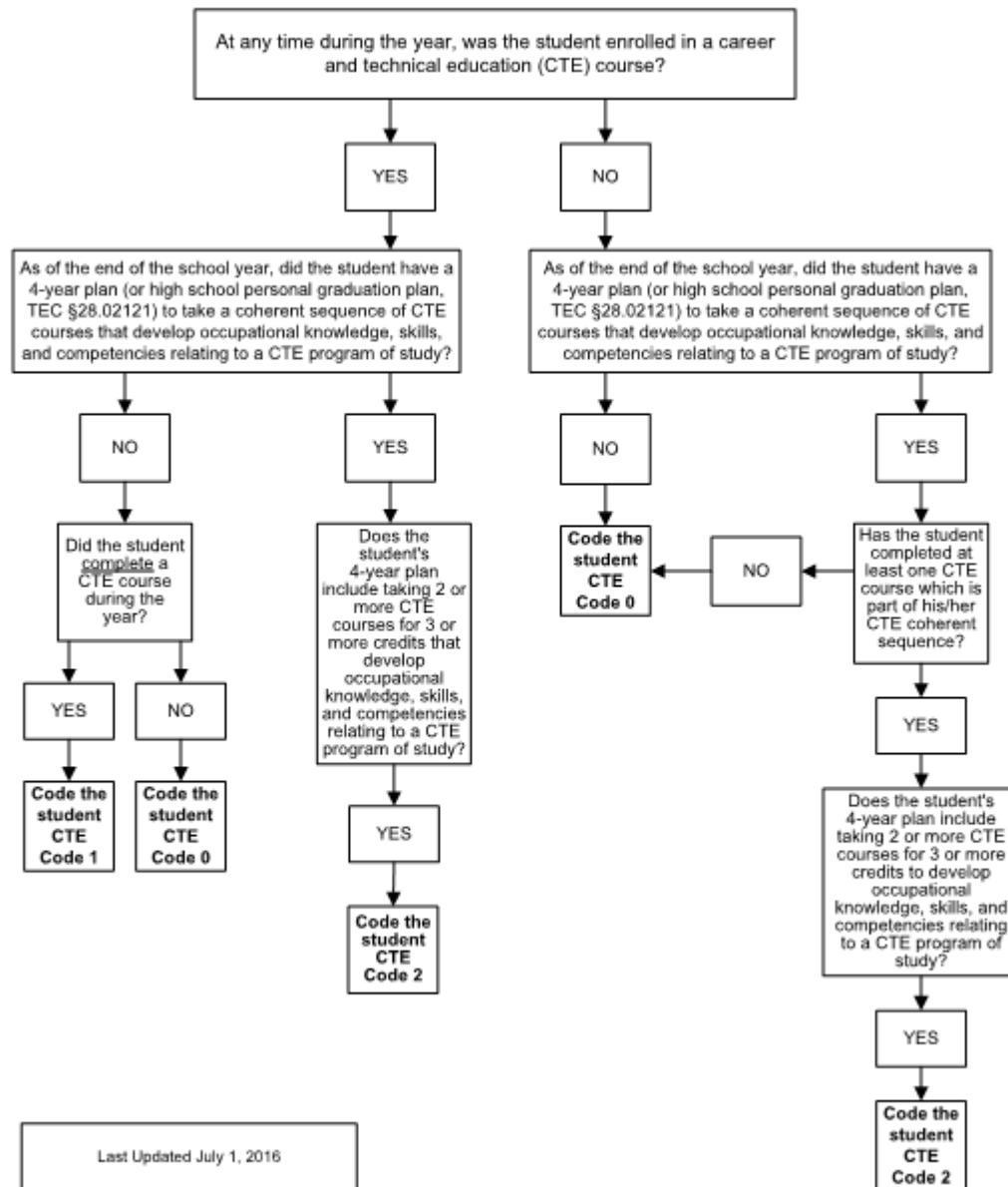


**Career and Technical Education Indicator Code
 Fall Snapshot Decision Chart (E0031)**



**Career and Technical Education Indicator Code
 Summer Submission Decision Chart (E0031)**



ESL-PROGRAM-TYPE-CODE (E1043) indicates whether the student is participating in a state-approved English as a Second Language (ESL) program. An ESL program in grades PK – 8 is a program of intensive instruction in English from teachers either certified or endorsed in ESL who use second language acquisition information to teach LEP students the English Language Proficiency Standards (ELPS). An ESL program in grades 9 – 12 is a program of intensive instruction in English from teachers trained in recognizing and dealing with language differences who use second language acquisition information to teach LEP students the English Language Proficiency Standards (ELPS). [See 19 TAC §89.1210(f).]

GIFTED-TALENTED-INDICATOR-CODE (E0034) indicates whether the student is participating in a state-approved gifted and talented program, as defined in 19 TAC §89.1.