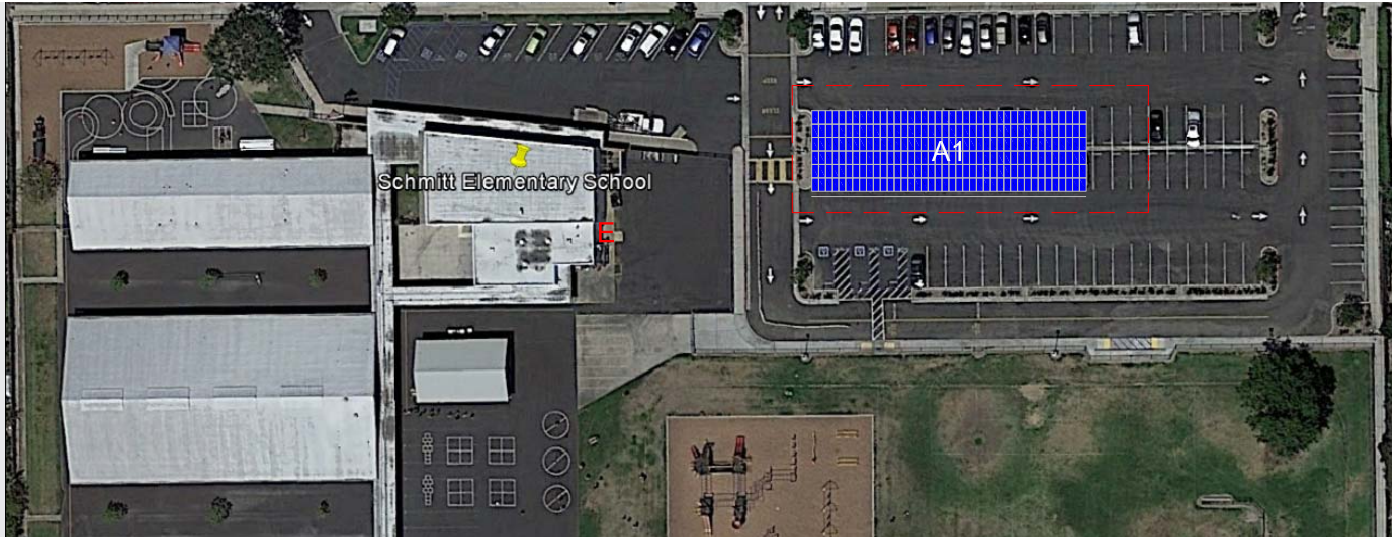




Schmitt Elementary Construction Update

Powering Success Through Sustainability: Putting Your Proposition 39 Dollars to Work



As part of a larger District-wide program, Schmitt Elementary School is undergoing the following improvements:

- Interior and exterior LED lighting to enhance visibility and improve safety
- Solar shade structures to provide shade and coverage to vehicles while generating clean electricity
- HVAC unit replacement for more comfortable classroom environments
- Plumbing improvements and irrigation controls to conserve potable water

District and school staff are eager to break ground on this exciting new project that will bring many added benefits to students, deliver ongoing energy and water savings, and improve the learning environment for many years to come.

Construction will commence on November 30th, 2015 on a series of modernization upgrades, beginning with irrigation and plumbing improvements. Ongoing work is scheduled to be completed by summer of 2016. Schmitt Elementary will remain open during the entire construction period.

We're sorry for the temporary inconvenience during construction, but we are confident that these new improvements will be well worth the wait. Thank you for your cooperation and understanding during this modernization.

What you need to know

Parking

A portion of the parking lot, highlighted in red in the site map above, will be temporarily closed during the construction of the solar arrays from **2/23/16 to 5/3/16**. Please use the other parking areas in the map above for alternative parking during construction.

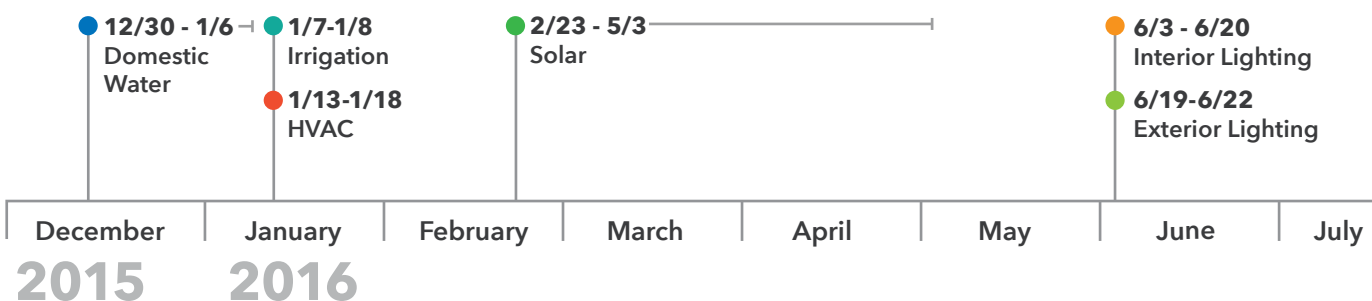
Utility Disruption

Telephone, electrical, cable TV and gas services should not be affected by this construction during school hours, barring any unforeseen circumstances.

Noise

There will be standard construction noise during school hours limited to the areas near construction.

Construction Timeline



Schmitt Elementary School Annual Savings

| | |
|--|-------------------------|
| Install Solar PV | 115,410 kWh electricity |
| Upgrade Lighting | 79,956 kWh electricity |
| Replace Existing Portable Classroom HVAC | 14,328kWh electricity |
| Plumbing & Irrigation Upgrades | 524 kGal water |

The annual kWh (kilo- watt hour) savings at Schmitt Elementary School is the equivalent of powering 12,767 laptop computers for 1 hour a day for 1 year!

Environmental Stewardship

The impact the Schmitt Elementary School will have on the environment is **equal to one** of the following:



Eliminating Green House Gas emissions from:
31 cars annually
930 cars over 30 years



Sequestering carbon by:
3,722 trees per year
111,660 trees over 30 years



Reducing carbon dioxide emissions generated by:
13 homes annually
390 homes over 30 years



Recycling waste instead of sending to a landfill:
52 tons per year
1,560 tons over 30 years

Solar Fun Facts

- In 1921 the Nobel Prize in Physics was awarded to Albert Einstein for experiments with solar power and the discovery of the photoelectric effect.
- Light that comes from the Sun takes approximately 8 minutes and 20 seconds to hit the Earth.
- Solar energy systems require little maintenance and last several decades.
- Government rebates and incentives make solar cheaper and easier than ever before.
- The solar industry is creating jobs six times faster than the overall job market.

For More Information Regarding This Program **VISIT WWW.WSDK8.US**