

# Flute

D Concert



G Concert



C Concert



F Concert



Bb Concert



Eb Concert



Ab Concert



Db Concert



Chromatic



TMEA Region 26 Scales

Oboe

D Concert



Musical notation for the D Concert scale in treble clef, 2/4 time. The scale starts on D4 and ends on D5, consisting of the notes D, E, F#, G, A, B, C, D.

G Concert



Musical notation for the G Concert scale in treble clef, 2/4 time. The scale starts on G4 and ends on G5, consisting of the notes G, A, B, C, D, E, F#, G.

C Concert



Musical notation for the C Concert scale in treble clef, 2/4 time. The scale starts on C4 and ends on C5, consisting of the notes C, D, E, F, G, A, B, C.

F Concert



Musical notation for the F Concert scale in treble clef, 2/4 time. The scale starts on F4 and ends on F5, consisting of the notes F, G, A, Bb, C, D, E, F.

Bb Concert



Musical notation for the Bb Concert scale in treble clef, 2/4 time. The scale starts on Bb4 and ends on Bb5, consisting of the notes Bb, C, D, Eb, F, G, Ab, Bb.

Eb Concert



Musical notation for the Eb Concert scale in treble clef, 2/4 time. The scale starts on Eb4 and ends on Eb5, consisting of the notes Eb, F, G, Ab, Bb, C, D, Eb.

Ab Concert



Musical notation for the Ab Concert scale in treble clef, 2/4 time. The scale starts on Ab4 and ends on Ab5, consisting of the notes Ab, Bb, C, Db, Eb, F, G, Ab.

Db Concert



Musical notation for the Db Concert scale in treble clef, 2/4 time. The scale starts on Db4 and ends on Db5, consisting of the notes Db, Eb, F, G, Ab, Bb, C, Db.

Chromatic



Musical notation for the chromatic scale ascending in treble clef, 2/4 time. The scale starts on C4 and ends on C5, consisting of the notes C, C#, D, D#, E, E#, F, F#, G, G#, A, A#, B, B#, C.



Musical notation for the chromatic scale descending in treble clef, 2/4 time. The scale starts on C5 and ends on C4, consisting of the notes C, B, Bb, Ab, G, F, F#, E, Eb, D, D#, C.

TMEA Region 26 Scales  
**Bassoon**

2006

D Concert



G Concert



C Concert



F Concert



Bb Concert



Eb Concert



Ab Concert



Db Concert



Chromatic



TMEA Region 26 Scales  
Clarinet in Bb

2006

D Concert

Musical notation for the D Concert scale in treble clef, 2/4 time. The scale starts on D4 and ends on D5. The notes are: D4, E4, F#4, G4, A4, B4, C5, D5. The first two notes (D4, E4) are marked with 'R' and 'L' respectively, indicating right and left hand starting positions. The piece concludes with a double bar line and a final D4 note.

G Concert

Musical notation for the G Concert scale in treble clef, 2/4 time. The scale starts on G4 and ends on G5. The notes are: G4, A4, B4, C5, D5, E5, F#5, G5. The piece concludes with a double bar line and a final G4 note.

C Concert

Musical notation for the C Concert scale in treble clef, 2/4 time. The scale starts on C4 and ends on C5. The notes are: C4, D4, E4, F4, G4, A4, B4, C5. The piece concludes with a double bar line and a final C4 note.

F Concert

Musical notation for the F Concert scale in treble clef, 2/4 time. The scale starts on F4 and ends on F5. The notes are: F4, G4, A4, Bb4, C5, D5, Eb5, F5. The piece concludes with a double bar line and a final F4 note.

Bb Concert

Musical notation for the Bb Concert scale in treble clef, 2/4 time. The scale starts on Bb4 and ends on Bb5. The notes are: Bb4, C5, D5, Eb5, F5, G5, Ab5, Bb5. The piece concludes with a double bar line and a final Bb4 note.

Eb Concert

Musical notation for the Eb Concert scale in treble clef, 2/4 time. The scale starts on Eb4 and ends on Eb5. The notes are: Eb4, F4, G4, Ab4, Bb4, C5, D5, Eb5. The piece concludes with a double bar line and a final Eb4 note.

Ab Concert

Musical notation for the Ab Concert scale in treble clef, 2/4 time. The scale starts on Ab4 and ends on Ab5. The notes are: Ab4, Bb4, C5, D5, Eb5, F5, G5, Ab5. The piece concludes with a double bar line and a final Ab4 note.

Db Concert

Musical notation for the Db Concert scale in treble clef, 2/4 time. The scale starts on Db4 and ends on Db5. The notes are: Db4, Eb4, F4, G4, Ab4, Bb4, C5, Db5. The piece concludes with a double bar line and a final Db4 note.

Chromatic

Musical notation for the Chromatic scale in treble clef, 2/4 time. The scale starts on C4 and ends on C5. The notes are: C4, C#4, D4, D#4, E4, E#4, F4, F#4, G4, G#4, A4, A#4, B4, B#4, C5. The piece concludes with a double bar line and a final C4 note.

TMEA Region 26 Scales  
**Bass Clarinet**

2006

D Concert

Musical notation for the D Concert scale in treble clef, 2/4 time. The scale is written in D major (two sharps). It consists of a half note followed by quarter notes. The notes are: D4, E4, F#4, G4, A4, B4, C5, B4, A4, G4, F#4, E4, D4. The piece ends with a double bar line and repeat dots.

R L

G Concert

Musical notation for the G Concert scale in treble clef, 2/4 time. The scale is written in G major (one sharp). It consists of a half note followed by quarter notes. The notes are: G4, A4, B4, C5, B4, A4, G4, F#4, E4, D4, C4, B3, A3, G3. The piece ends with a double bar line and repeat dots.

C Concert

Musical notation for the C Concert scale in treble clef, 2/4 time. The scale is written in C major (no sharps or flats). It consists of a half note followed by quarter notes. The notes are: C4, D4, E4, F4, G4, A4, B4, C5, B4, A4, G4, F4, E4, D4, C4. The piece ends with a double bar line and repeat dots.

F Concert

Musical notation for the F Concert scale in treble clef, 2/4 time. The scale is written in F major (one flat). It consists of a half note followed by quarter notes. The notes are: F4, G4, A4, Bb4, C5, Bb4, A4, G4, F4, E4, D4, C4, B3, A3, F3. The piece ends with a double bar line and repeat dots.

Bb Concert

Musical notation for the Bb Concert scale in treble clef, 2/4 time. The scale is written in Bb major (two flats). It consists of a half note followed by quarter notes. The notes are: Bb4, C5, Bb4, A4, G4, F4, E4, D4, C4, Bb3, Ab3, Gb3, F3. The piece ends with a double bar line and repeat dots.

Eb Concert

Musical notation for the Eb Concert scale in treble clef, 2/4 time. The scale is written in Eb major (three flats). It consists of a half note followed by quarter notes. The notes are: Eb4, F4, G4, Ab4, Bb4, C5, Bb4, Ab4, G4, F4, Eb4, D4, C4, Bb3, Ab3, Gb3, Eb3. The piece ends with a double bar line and repeat dots.

Ab Concert

Musical notation for the Ab Concert scale in treble clef, 2/4 time. The scale is written in Ab major (four flats). It consists of a half note followed by quarter notes. The notes are: Ab4, Bb4, C5, Bb4, Ab4, G4, F4, Eb4, D4, C4, Bb3, Ab3, Gb3, F3, Eb3, Ab3, Ab4. The piece ends with a double bar line and repeat dots.

Db Concert

Musical notation for the Db Concert scale in treble clef, 2/4 time. The scale is written in Db major (five flats). It consists of a half note followed by quarter notes. The notes are: Db4, Eb4, F4, G4, Ab4, Bb4, C5, Bb4, Ab4, G4, F4, Eb4, D4, C4, Bb3, Ab3, Gb3, F3, Eb3, Db3, Db4. The piece ends with a double bar line and repeat dots.

R L

Chromatic

Musical notation for the ascending chromatic scale in treble clef, 2/4 time. It consists of a half note followed by quarter notes. The notes are: C4, C#4, D4, D#4, E4, E#4, F4, F#4, G4, G#4, A4, A#4, B4, B#4, C5. The piece ends with a double bar line and repeat dots.

Musical notation for the descending chromatic scale in treble clef, 2/4 time. It consists of a half note followed by quarter notes. The notes are: C5, B4, Bb4, Ab4, G4, Gb4, F4, Fb4, E4, Eb4, D4, Db4, C4, B3, Bb3, Ab3, Gb3, F3, Eb3, D3, Db3, C3. The piece ends with a double bar line and repeat dots.

TMEA Region 26 Scales  
**Saxophone**

2006

Written B Major



Musical notation for the Written B Major scale, starting on B4 and ending on B5. The scale is written in treble clef with a key signature of three sharps (F#, C#, G#) and a common time signature (C). The notes are B4, C#4, D#4, E5, F#5, G#5, A5, B5.

Written E Major



Musical notation for the Written E Major scale, starting on E4 and ending on E5. The scale is written in treble clef with a key signature of three sharps (F#, C#, G#) and a common time signature (C). The notes are E4, F#4, G#4, A4, B4, C#5, D#5, E5.

Written A Major



Musical notation for the Written A Major scale, starting on A3 and ending on A4. The scale is written in treble clef with a key signature of three sharps (F#, C#, G#) and a common time signature (C). The notes are A3, B3, C#4, D#4, E4, F#4, G#4, A4.

Written D Major



Musical notation for the Written D Major scale, starting on D4 and ending on D5. The scale is written in treble clef with a key signature of two sharps (F#, C#) and a common time signature (C). The notes are D4, E4, F#4, G#4, A4, B4, C#5, D5.

Written G Major



Musical notation for the Written G Major scale, starting on G3 and ending on G4. The scale is written in treble clef with a key signature of one sharp (F#) and a common time signature (C). The notes are G3, A3, B3, C#4, D4, E4, F#4, G4.

Written C Major



Musical notation for the Written C Major scale, starting on C4 and ending on C5. The scale is written in treble clef with a common time signature (C). The notes are C4, D4, E4, F4, G4, A4, B4, C5.

Written F Major



Musical notation for the Written F Major scale, starting on F3 and ending on F4. The scale is written in treble clef with a key signature of one flat (Bb) and a common time signature (C). The notes are F3, G3, A3, Bb3, C4, D4, E4, F4.

Written Bb Major



Musical notation for the Written Bb Major scale, starting on Bb3 and ending on Bb4. The scale is written in treble clef with a key signature of two flats (Bb, Eb) and a common time signature (C). The notes are Bb3, C4, D4, Eb4, F4, G4, Ab4, Bb4.

Chromatic



Musical notation for the Chromatic scale (ascending), starting on C4 and ending on C5. The scale is written in treble clef with a common time signature (C). The notes are C4, C#4, D4, D#4, E4, E#4, F4, F#4, G4, G#4, A4, A#4, B4, B#4, C5.



Musical notation for the Chromatic scale (descending), starting on C5 and ending on C4. The scale is written in treble clef with a common time signature (C). The notes are C5, B#4, B4, A#4, A4, G#4, G4, F#4, F4, E#4, E4, D#4, D4, C#4, C4.

TMEA Region 26 Scales  
Trumpet in Bb & Euphonium TC

2006

D Concert



G Concert



C Concert



F Concert



Bb Concert



Eb Concert



Ab Concert



Db Concert



Chromatic



TMEA Region 26 Scales

Horn in F

2006

D Concert



G Concert



C Concert



F Concert



Bb Concert



Eb Concert



Ab Concert



Db Concert



Chromatic





TMEA Region 26 Scales

# Euphonium

2006

D Concert



G Concert



C Concert



F Concert



Bb Concert



Eb Concert



Ab Concert



Db Concert



Chromatic



TMEA Region 26 Scales  
**Trombone**

2006

D Concert



G Concert



C Concert



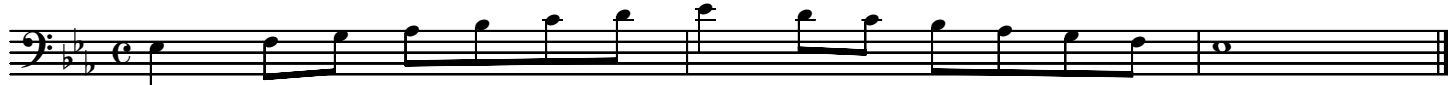
F Concert



Bb Concert



Eb Concert



Ab Concert



Db Concert



Chromatic



TMEA Region 26 Scales

**Tuba**

2006

D Concert



G Concert



C Concert



F Concert



Bb Concert



Eb Concert



Ab Concert



Db Concert



Chromatic



