

# Connecting Bluetooth Devices

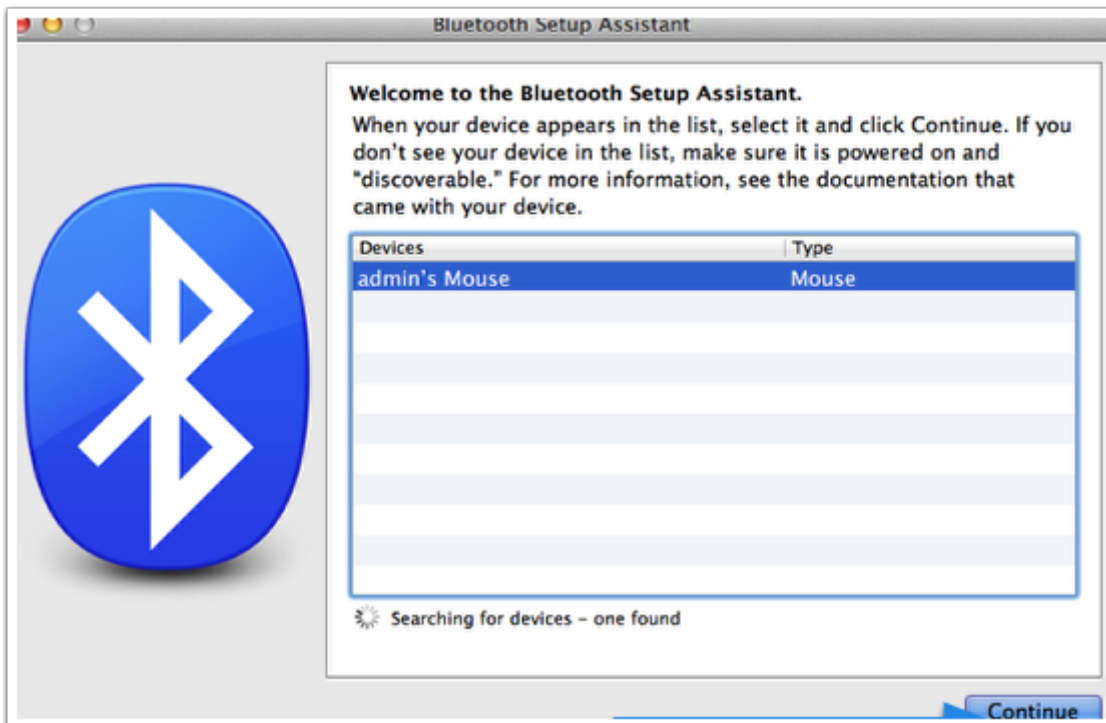
## Step 1:

Click the Bluetooth menu and select "Set Up Bluetooth Device..."



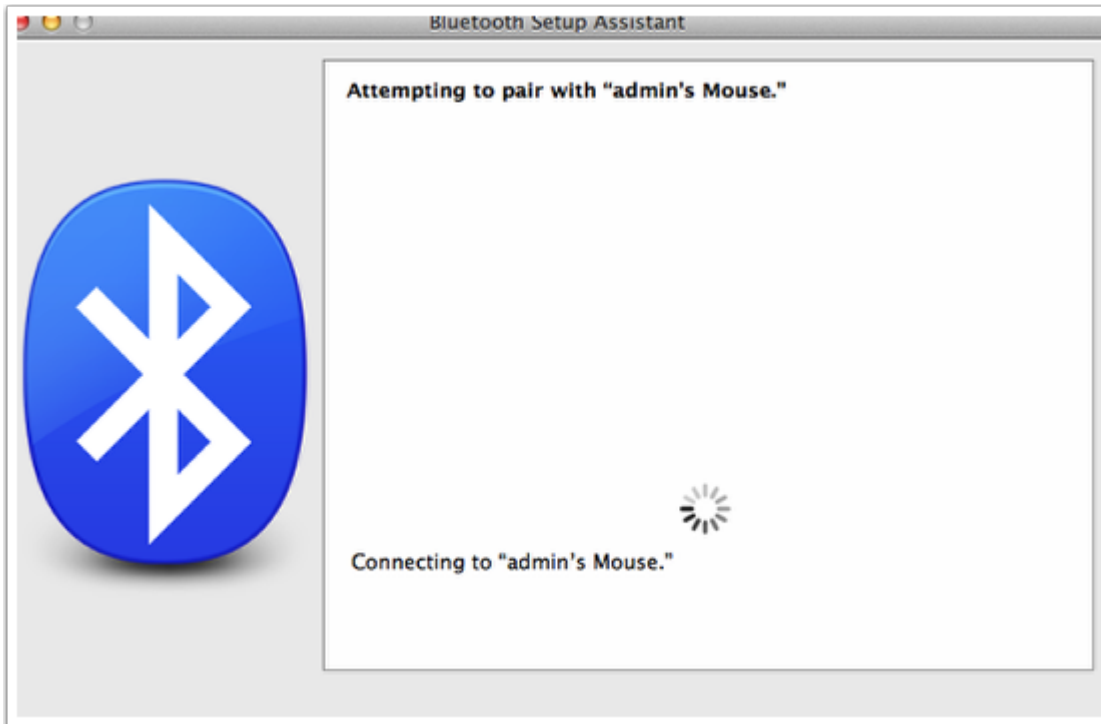
## Step 2:

Select the device that you would like to connect and click "Continue"



## Step 3:

The computer will connect to the device...



## Step 4:

Once the device is paired you will have the option to quit or setup another device. If you don't have another device to connect click the "Quit" button.

