



# Madrid CSD 2014 – 2015 District Report

## Our Mission

The Community of Madrid will work together to maximize the ability of all students to succeed in society.

## Student Achievement

Grade Level	Reading		Math		Science	
	Percent Proficient	Percent Advanced	Percent Proficient	Percent Advanced	Percent Proficient	Percent Advanced
2	85.7	38.1	83.4	40.5	76.2	31.0
3	83.9	33.9	91.1	23.2	84.0	16.1
4	84.2	31.6	86.9	23.7	94.7	34.2
5	90.0	37.5	90.0	35.0	95.0	27.5
6	86.9	41.0	85.2	31.1	90.2	42.6
7	82.5	25.0	95.0	20.0	92.5	17.5
8	82.6	28.8	77.0	21.2	88.5	17.3
9	91.7	35.4	87.5	29.2	93.7	31.3
10	80.4	14.3	85.7	12.5	92.9	12.5
11	80.4	15.7	76.5	13.7	78.4	19.6

The chart above shows the percent of students in reading, math and science that scored at the proficient level of Iowa Assessments, and the percent that scored at the advanced level of the Iowa Assessments. Those that scored at the advanced were also scored as proficient.

## Financial Information

General Fund Revenue		
Source	% of Budget	Amount
Property Taxes	21.4%	\$1,364,556
State Aid	66.9%	\$4,259,346
Income Surtax	3.9%	\$250,259
Misc. Income	7.8%	\$491,630

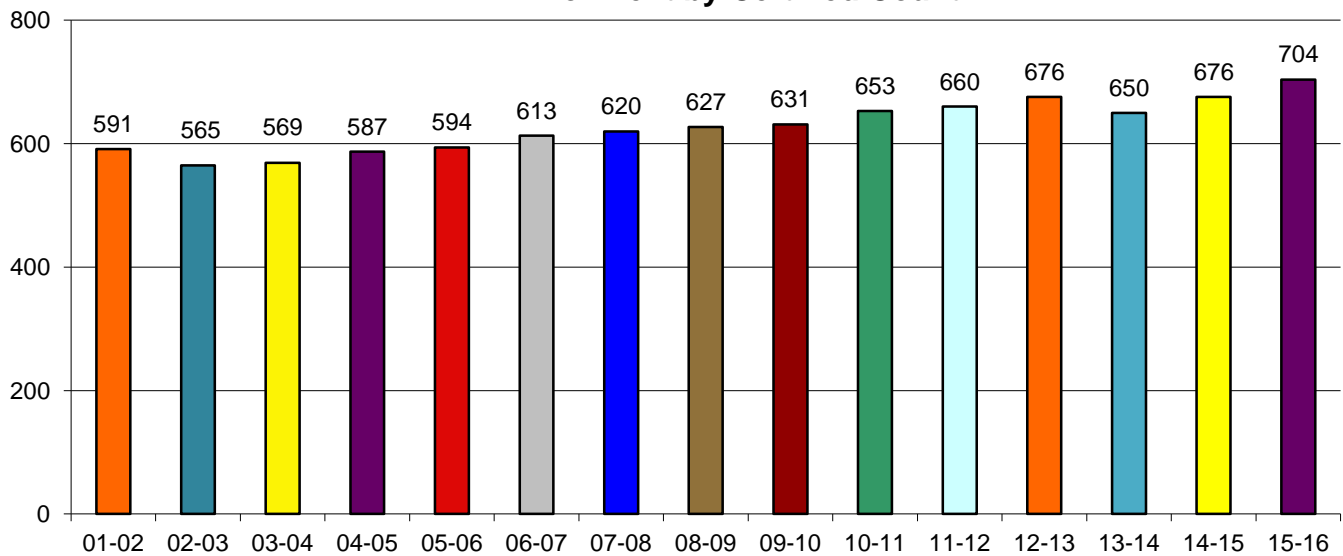
General Fund Expenditures		
Expense	% of Expense	Amount
Salaries	58.4%	\$3,846,458
Employee Benefits	18.1%	\$1,193,185
Supplies & Materials	4.9%	\$328,450
Capital Outlay	1.9%	\$125,326
Purchased Services	11.4%	\$750,621
Technology	1.4%	\$89,652
AEA Flowthrough	3.9%	\$254,654



# Enrollment

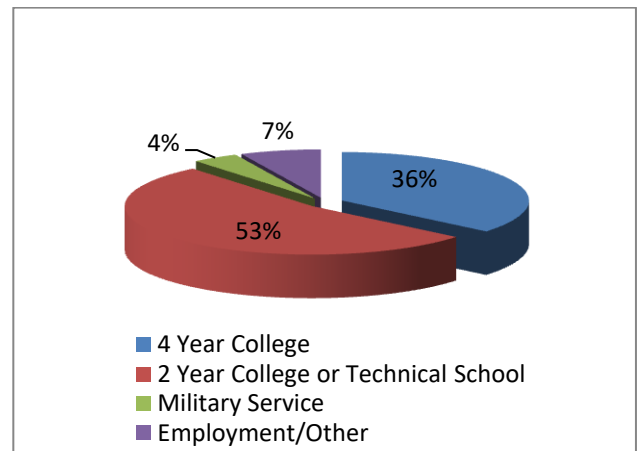
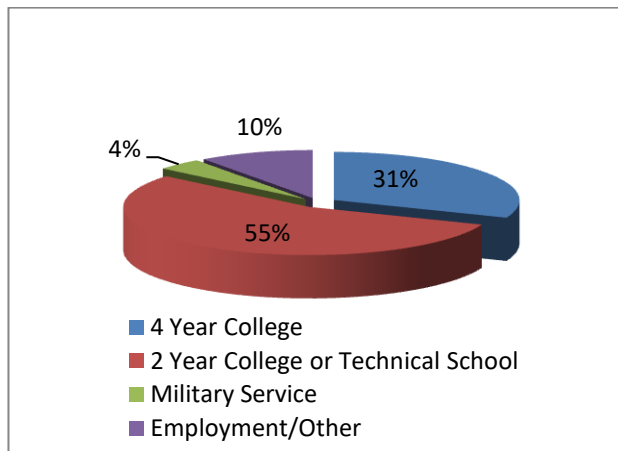


### Enrollment by Certified Count



## 2015 Graduate Plans

## 2011 – 2015 Graduation Plans



## Nutrition

## Student Transportation

## Teacher Education

<u>Meals Served</u>	<u>Lunch</u>	<u>Breakfast</u>
Elementary	50,719	9,278
Jr/Sr. High	43,857	7,781
Total	94,576	17,059

Miles Traveled	65,667
Buses	7
Vans/Trucks	6
Drivers	6

Number of Teaching Staff	53
Percent with BA	56%
Percent with BA+28 grad hours	23%
Percent with MA	21%