

*St. Rita Catholic School*

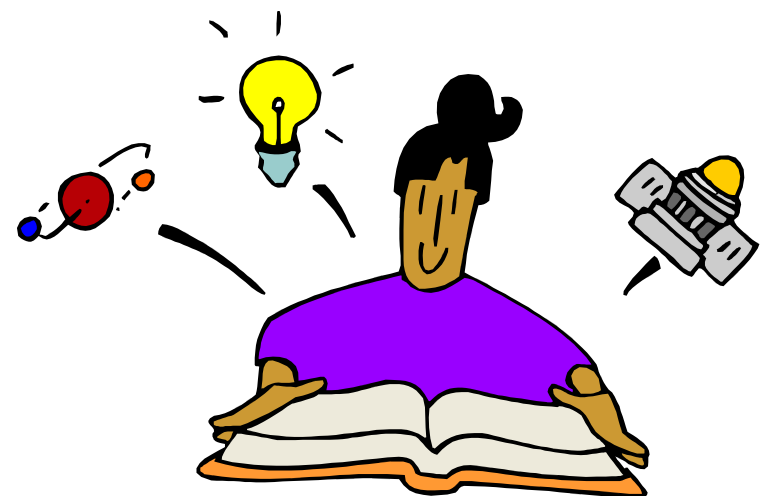
Cost: \$100

To schedule an evaluation, please  
contact Marjorie Lane (x316) or  
Lisa Schrakamp (x326) at 972-  
239-3203.

---

## *Dyslexia Screening Profile*

---



## Dyslexia Profile Testing

Testing for dyslexia will now be available on campus at St. Rita Catholic School. The tests and profile used are those recommended by Texas Scottish Rite Hospital for Children (TSRHC), a leader in dyslexia identification and teaching strategies.

The evaluation will consist of a half-day of testing with the child and a conference with the parents to discuss the results. A diagnosis of dyslexia will or will not be made using the Dyslexia Profile Form provided by TSRHC. If necessary, additional outside testing may be recommended.

## Areas of Assessment:

---

### Phonological Processing:

A test such as the Comprehensive Test of Phonological Processing (CTOPP) measuring phonological awareness, memory and speed.

---

### Reading Skills:

Tests such as the Wide Range Achievement Test - 3 (WRAT-3), Woodcock Reading Mastery Test (WRMT-R), and or the Gray Oral Reading Test (GORT-4) to measure a variety of reading skills.

---

### Writing and Spelling:

Tests such as the WRAT for spelling or the Test of Written Language (TOWL-3), especially for children over the age of 8 or 9.

---

### Academic Ability:

Test such as the Kaufman Brief Intelligence test (KBIT-2), which looks at overall academic ability in both verbal and nonverbal areas.

---