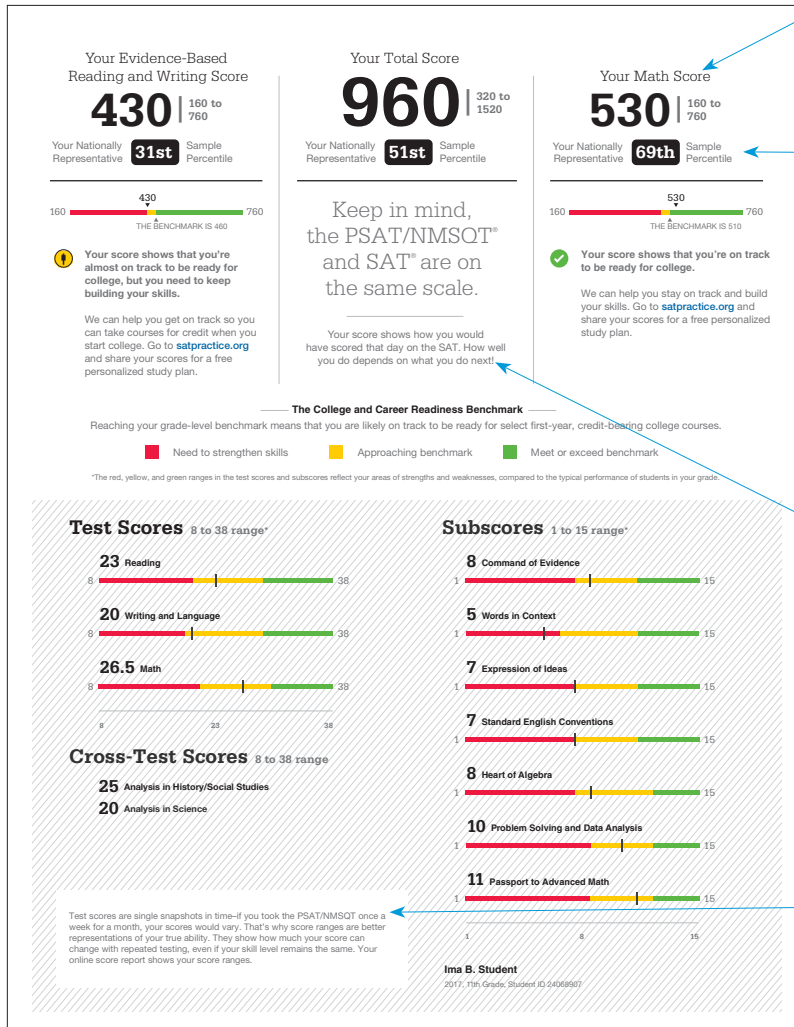


## A PARENT TUTORIAL

# Understanding 2017 PSAT/NMSQT Results

### A Case Study: Ima B. Student's PSAT/NMSQT Score Report

Take a look at Ima B. Student's sample score report below and on the back. Use the information to help you interpret your student's PSAT/NMSQT® Score Report.



Score Report

#### What Are Ima's Scores?

Ima's Evidence-Based Reading and Writing score is 430, and her Math score is 530. In Evidence-Based Reading and Writing, Ima's score is approaching the benchmark (explained on the report), but she is not quite on track for college readiness. In Math, however, Ima is exceeding the benchmark and is on track. Test scores, cross-test scores, and subscores can give Ima a better understanding of areas to work on.

#### What Are Ima's Score Percentiles?

Since Ima is in the 11th grade, the percentiles compare her scores with those of all 11th graders in the nation. Ima scored as well as or better in Evidence-Based Reading and Writing than 31% of a nationally representative group of juniors. In Math, she scored as well as or better than 69% of a nationally representative group of juniors. Additional percentiles are available in Ima's online score report.

#### How Will Ima Do on the SAT?

The PSAT/NMSQT and SAT® are scored on a common scale; therefore, if Ima had taken the SAT instead of the PSAT/NMSQT on the same test date, she would have received the same score. When Ima takes the SAT, she will likely have had additional learning from school and practice. Her PSAT/NMSQT results can help Ima focus her efforts in high school to be better prepared for the SAT.

#### What Are Ima's Score Ranges?

Ima can sign in to her online score report to see her score ranges. They indicate how much her score would likely vary if she took the test repeatedly under the same conditions, with no change in her skill level.

**National Merit Scholarship Corporation**

National Merit Scholarship Corporation (NMSC) conducts the National Merit® Scholarship Program, an academic competition for recognition and college scholarships.

To designate students who qualify for recognition in its 2019 competition, NMSC will consider the 2017 PSAT/NMSQT® Selection Index scores of some 1.6 million test takers (usually high school juniors) who meet program entry requirements. For more information, please visit: [www.nationalmerit.org](http://www.nationalmerit.org).

If any of your responses to NMSC's "Entry Requirements" questions (see right-hand column) are inaccurate or there has been a change in plans that may affect program entry, write immediately to:

**National Merit Scholarship Corporation  
Attn: Scholarship Administration  
1569 Sherman Avenue, Suite 200  
Evanston, IL 60201-4897**

Include your name and home address along with your high school name, address, and six-digit code number.

**Your NMSC Selection Index**  
**139**

NMSC uses a Selection Index score based on PSAT/NMSQT scores as an initial screen of students who enter its scholarship program. To calculate your Selection Index score, double the sum of your Reading, Writing and Language, and Math Test scores.

**Eligibility Information**

You must entry requirements for the 2019 National Merit Scholarship Program and your Selection Index score will be considered among 1.6 million program entrants.

If your Selection Index places you among the 50,000 high scorers who qualify for National Merit Scholarship Program recognition, you will be notified next September when qualifying Selection Index scores will be made available.

**Entry Requirements**  
(Information you provided on your answer sheet)

High school student: **YES**

Year to complete high school and enroll full time in college: **2019**

Total years to be spent in grades 9-12: **4**

U.S. Citizenship: **YES**

**Your Scores: Next Steps**  
Additional skills and improvement suggestions can be found in your online score report.

Your score indicates that you are already likely able to:

**Reading Test**  
23  
8 to 38

Improve your skills by focusing on the following suggestions:

- Read a moderately challenging passage closely to draw a reasonable inference.
- Determine the best textual evidence for an inference when both evidence and inference are relatively obvious and direct (e.g., a clearly stated fact or evidence for a simple inference).
- Determine the central idea or theme of a moderately challenging passage.

**Writing and Language Test**  
20  
8 to 38

- Use supporting information to achieve a simple purpose (e.g., providing a short list of examples introduced by "for instance").
- Recognize and correct an obviously inappropriate shift in verb tense (e.g., using present tense when the context clearly calls for past tense).
- Distinguish between singular and plural possessive nouns and between plural and possessive nouns.

**Math Test**  
26.5  
8 to 38

- Solve a linear equation in one variable.
- Identify a key feature of one representation (graph, equation, table, etc.) of a linear relationship based on a different representation.
- Factor a monomial from a polynomial expression.
- Factor a trinomial into two binomials.
- Use function notation to represent dependent relationships.
- Write radical expressions in equivalent forms using fractional exponents.
- Add, subtract, multiply, and divide radical expressions.
- Use the inverse relationship between roots and exponents to solve equations.

**Get more next steps online**

- SAT Practice**  
Connect to Khan Academy for FREE, world-class SAT practice on [satpractice.org](http://satpractice.org).
- AP and Coursework**  
See which AP courses may be good matches for you. [studentscores.collegeboard.org](http://studentscores.collegeboard.org)
- Register for the SAT**  
Select an SAT test date, and register for it now. **Ima B. Student** 2017, 11th Grade

**Score Report**

**What Are the Next Steps for Ima?**

Under **Get more next steps online**, Ima is directed to [studentscores.collegeboard.org](http://studentscores.collegeboard.org) to learn how to prepare for the SAT and see her potential for challenging AP® coursework.

**When Should Ima Take the SAT?**

As a junior, Ima should begin planning when she will take the SAT. Most students take the SAT for the first time in their junior year. By planning now, Ima can ensure she has adequate time to practice for the SAT. She can take advantage of practice resources by visiting [studentscores.collegeboard.org](http://studentscores.collegeboard.org).

**How Can Ima Learn from Her Answers?**

Using her score report with her PSAT/NMSQT test booklet, Ima can see the actual questions, correct answers, and difficulty level alongside her own answers. She can use her online score report to review the questions she answered incorrectly or omitted, and to see detailed answer explanations.

For students who tested at a school participating in the test administration study, the actual questions, answers, and answer explanations will not be provided, and the score report will not include the correct answer column.

**Will Ima Be Able to Enter the National Merit Scholarship Program?**

Ima has an NMSC Selection Index score of 139, which is double the sum of her Reading (23), Writing and Language (20), and Math (26.5) Test scores. This Selection Index score is used by National Merit Scholarship Corporation to designate students to be recognized in its National Merit® Scholarship Program.

If an asterisk had appeared next to Ima's score, it would mean she does not meet entry requirements for the program. In this case, Ima meets entry requirements and will be recognized if her score places her among the 50,000 high scorers. For entry requirements and information on the steps in the competition, see the 2017 PSAT/NMSQT Student Guide or visit [www.nationalmerit.org](http://www.nationalmerit.org).

**How Can Ima Improve Her Academic Skills?**

**Your Scores: Next Steps** are based on her test scores, and what general skills similarly performing students understand. Ima can see which skills she performed well on and which she needs to improve. When she goes online and signs in to the full report, she can see additional skills and improvement steps. Ima can also link her account to Khan Academy® for personalized practice recommendations.

**Your Question-Level Feedback**

Reading				Writing and Language				Math Test-Calculator			
Question #	Correct	Your Answer	Difficulty	Question #	Correct	Your Answer	Difficulty	Question #	Correct	Your Answer	Difficulty
1	A	✓	✓	1	D	✓	✓	1	B	✓	✓
2	B	✓	✓	2	B	✓	✓	2	A	✓	✓
3	B	✓	✓	3	C	✓	✓	3	B	✓	✓
4	B	✓	✓	4	C	✓	✓	4	D	✓	✓
5	C	✓	✓	5	B	✓	✓	5	B	✓	✓
6	D	✓	✓	6	B	✓	✓	6	A	✓	✓
7	B	✓	✓	7	A	✓	✓	7	B	✓	✓
8	A	✓	✓	8	B	✓	✓	8	C	✓	✓
9	D	✓	✓	9	A	✓	✓	9	A	✓	✓
10	A	✓	✓	10	D	✓	✓	10	D	✓	✓
11	D	✓	✓	11	D	✓	✓	11	D	✓	✓
12	D	✓	✓	12	B	✓	✓	12	A	✓	✓
13	D	✓	✓	13	C	✓	✓	13	B	✓	✓
14	A	✓	✓	14	C	✓	✓	14	C	✓	✓
15	B	✓	✓	15	D	✓	✓	15	D	✓	✓
16	B	✓	✓	16	B	✓	✓	16	B	✓	✓
17	D	✓	✓	17	B	✓	✓	17	B	✓	✓
18	D	✓	✓	18	A	✓	✓	18	A	✓	✓
19	A	✓	✓	19	B	✓	✓	19	B	✓	✓
20	C	✓	✓	20	C	✓	✓	20	C	✓	✓
21	B	✓	✓	21	A	✓	✓	21	A	✓	✓
22	D	✓	✓	22	A	✓	✓	22	A	✓	✓
23	D	✓	✓	23	C	✓	✓	23	C	✓	✓
24	D	✓	✓	24	D	✓	✓	24	D	✓	✓
25	C	✓	✓	25	C	✓	✓	25	C	✓	✓
26	B	✓	✓	26	A	✓	✓	26	A	✓	✓
27	B	✓	✓	27	A	✓	✓	27	A	✓	✓
28	A	✓	✓	28	B	✓	✓	28	B	✓	✓
29	D	✓	✓	29	D	✓	✓	29	D	✓	✓
30	A	✓	✓	30	C	✓	✓	30	C	✓	✓
31	D	✓	✓	31	B	✓	✓	31	B	✓	✓
32	A	✓	✓	32	B	✓	✓	32	B	✓	✓
33	C	✓	✓	33	C	✓	✓	33	C	✓	✓
34	A	✓	✓	34	B	✓	✓	34	B	✓	✓
35	B	✓	✓	35	D	✓	✓	35	D	✓	✓
36	C	✓	✓	36	A	✓	✓	36	A	✓	✓
37	C	✓	✓	37	C	✓	✓	37	C	✓	✓
38	C	✓	✓	38	A	✓	✓	38	A	✓	✓
39	C	✓	✓	39	C	✓	✓	39	C	✓	✓
40	C	✓	✓	40	D	✓	✓	40	D	✓	✓
41	B	✓	✓	41	D	✓	✓	41	D	✓	✓
42	B	✓	✓	42	A	✓	✓	42	A	✓	✓
43	A	✓	✓	43	C	✓	✓	43	C	✓	✓
44	A	✓	✓	44	B	✓	✓	44	B	✓	✓
45	A	✓	✓	45	C	✓	✓	45	C	✓	✓
46	D	✓	✓	46	D	✓	✓	46	D	✓	✓
47	C	✓	✓	47	C	✓	✓	47	C	✓	✓

Access Code: A02570145D

See the questions, and the answer explanations, online at [studentscores.collegeboard.org](http://studentscores.collegeboard.org)

©2017 The College Board. College Board, AP, SAT, and the acorn logo are registered trademarks of the College Board. PSAT/NMSQT is a registered trademark of the College Board and National Merit Scholarship Corporation. National Merit and the acorn logo are trademarks of the College Board. PSAT is a registered trademark of National Merit Scholarship Corporation.

Visit the College Board on the web: [collegeboard.org](http://collegeboard.org)

Use the key and National Merit Scholarship Corporation logo at [www.nationalmerit.org](http://www.nationalmerit.org)

Khan Academy is a registered trademark in the United States and other jurisdictions.

**Ima B. Student** 2017, 11th Grade

**Subscore**  
 CDE: Comments of Evidence  
 WLC: Writing or Language  
 E: Expression of Ideas  
 SEC: Standard English Conventions  
 HSA: Heart of Algebra  
 PSD: Problem Solving and Data Analysis  
 PAM: Progress to Advanced Math

**Cross-Test Score**  
 HSS: History or Social Studies  
 SCI: Analysis in Science

**Key**  
 ✓ Correct  
 ✗ Incorrect  
 ○ Unanswered  
 U Unanswered  
 M Multi-Graded  
 ■ Easy  
 ■ Medium  
 ■ Hard

**Score Report**